



**HAL**  
open science

## The dynamics of deforestation and reforestation in a developing economy

Julien Wolfersberger, Gregory Amacher, Philippe Delacote, Arnaud Dragicevic

► **To cite this version:**

Julien Wolfersberger, Gregory Amacher, Philippe Delacote, Arnaud Dragicevic. The dynamics of deforestation and reforestation in a developing economy. *Environment and Development Economics*, 2022, 27 (3), pp.272-293. 10.1017/S1355770X21000218 . hal-04157160

**HAL Id: hal-04157160**

**<https://agroparistech.hal.science/hal-04157160>**

Submitted on 10 Jul 2023

**HAL** is a multi-disciplinary open access archive for the deposit and dissemination of scientific research documents, whether they are published or not. The documents may come from teaching and research institutions in France or abroad, or from public or private research centers.

L'archive ouverte pluridisciplinaire **HAL**, est destinée au dépôt et à la diffusion de documents scientifiques de niveau recherche, publiés ou non, émanant des établissements d'enseignement et de recherche français ou étrangers, des laboratoires publics ou privés.

# The Dynamics Of Deforestation And Reforestation In A Developing Economy

Julien Wolfersberger<sup>1,2</sup>, Gregory S. Amacher<sup>3</sup>, Philippe Delacote<sup>2,4</sup>, Arnaud Dragicevic<sup>5</sup>

---

## Abstract

We develop a model of optimal land allocation in a developing economy that features three possible land uses: agriculture, primary and secondary forests. The distinction between those forest types reflects their different contribution in terms of public good. In our model, reforestation is costly because it undermines land title security. Using the forest transition concept, we study long-term land-use change and explain important features of cumulative deforestation across countries. Our results shed light on the speed at which net deforestation ends, on the effect of tenure costs in this process, and on composition in steady state. We also present a policy analysis that emphasizes the critical role of institutional reforms addressing the costs of both deforestation and tenure in order to promote a transition. We find that focusing only on net forest losses can be misleading since late transitions may yield, upon given conditions, a higher level of environmental benefits.

---

*Keywords:* Deforestation ; Economic Development ; Forest transition ; Tenure costs.

*JEL codes:* O13 ; Q23 ; Q56.

---

<sup>1</sup>Université Paris-Saclay, INRAE, AgroParisTech, UMR PSAE. Corresponding author. Email: julien.wolfersberger@agroparistech.fr

<sup>2</sup>Climate Economics Chair, Palais Brongniart, 28 Place de la Bourse, 75002 Paris, France.

<sup>3</sup>Virginia Polytechnic Institute and State University, Blacksburg, VA 24601-0324, USA. Email: gamacher@vt.edu

<sup>4</sup>BETA, Université Lorraine, INRAE, AgroParisTech, 54000 Nancy, France. Email: philippe.delacote@inrae.fr

<sup>5</sup>IRSTEA, Clermont-Ferrand, 9 Avenue Blaise Pascal, 63170 Aubiere, France. Email: arnaud.dragicevic@gmail.com

# 1 Introduction

Deforestation of tropical forests is responsible for various environmental issues (e.g., GHG emissions, soil erosion) and represents one of the most serious threats to biodiversity preservation (?). In the long run, it is possible that net forest cover in a country could stop decreasing, and inherent in this idea is a point in time where forest cover starts to increase. The existence of such a point is the forest transition (?). While it has already been reached in most developed countries, many developing countries in the tropics have not yet reached it and it is thus a challenge for these in the context of natural resources conservation and global climate change.

The forest transition approach is interesting as a concept, as it allows the consideration of the full pattern of a country's deforestation and afforestation paths along with development. In this paper, we employ it and build a model of optimal land allocation displaying three land uses: agriculture, primary and secondary forests. Our goal is to investigate the factors explaining the end of net deforestation (i.e., forest gains minus forest losses) in a given country, but also the remaining forest cover once the net deforestation episode ends. This is important in order to better understand the cumulative nature of deforestation along with economic development (??). We do so by incorporating land tenure costs in our model, which are a key feature of land use change in developing countries.

While most of the literature on deforestation in the tropics has focused on replacement of primary forests with non-forest land uses, such as agriculture or grazing, in order to understand the forest transition one may wish to devise a model where net forest cover can be decomposed into two distinct forest stocks: primary (natural old-growth forests) and secondary forests (regeneration and plantations established through reforestation). This is what we do in this paper. During development, the former decreases while, after some period of time, the latter increases. Those two types of forests cannot be considered as perfect substitutes. Indeed, they differ in many characteristics. First, primary forests are recognized to host larger and unique biodiversity than secondary

forests (e.g., ??). Second, and following this point, they provide very diverse livelihoods to local communities. While primary forests are an important reservoir of non-timber forest products (?) and selective timber harvesting, secondary forests appear to be more suitable for more intensive timber production and harvesting. Moreover, primary and secondary forests do not have the same carbon sequestration properties (?), and may have different costs of securing tenure.

To our knowledge, the theoretical economic papers related to the forest transition consider only one type of forest and focus only on the deforestation phase of the forest transition. For example, ? study the allocation of land uses between forest and agriculture, along with development in a small open economy allowing for the possibility of re-timbering of lands, but important properties of the forest transition hypothesis are not examined. ? use an optimal control model to examine how lobbying can influence the long-term conversion rate of forests, again not focusing on the forest transition. Similarly, ? investigates the effect of REDD+ transfer schemes on the long-term land conversion using a two-sector growth model. With the exception of ?, these articles collectively only consider the replacement of forest with non-forest uses and no possibility of reforestation. None of these studies examine the time point of the forest transition, the speed to which the turning point is reached, and the dynamics of forest cover change as the turning point is approached.

Also, previous work does not examine as we do here the importance of land tenure costs that can differ across land uses and the timing of important policy instruments that can be applied before or after the turning point, or the effects of these instruments on forest cover change. These aspects of deforestation are critical, however, in understanding policies that target forest cover loss or ecosystem services, such as REDD+. With the exception of ?, most REDD+ theoretical analyzes have focused on static and short term potential impacts at the micro-level, using contract theory tools to assess the impact of information on REDD+ effectiveness (????), or households' models to assess leakage (??).

In this paper, we incorporate these omissions into a model that makes clear the connection between primary forest depletion and secondary forest growth in a developing economy. Our approach highlights the economic features under which a transition is possible and its consequences to climate and biodiversity. Our model allows an analysis of the turning point that represents the minimum value of net forest cover (or highest level of cumulative deforestation) in the long run. It also allows us to examine the speed at which an economy reaches this turning point, and thus to fully understand the cumulative nature of deforestation. Finally, our contribution is also to assess the role of (i) deforestation costs and (ii) tenure costs in a policy exercise simulating REDD+ programs that would increase the former and decrease the later. The costs of securing tenure for plantations correspond to a major investment in property rights, often recommended by researchers (e.g., ?). As we will show, the nature of these costs is important in targeting given that tenure reform for secondary forests may adversely affect primary native forests.

The following section presents a detailed discussion of the forest transition and highlights the importance of completing the theory by accounting for the two dynamics that actually compose the net forest cover change. The model is developed in section 3, while conditions of a turning point are shown in section 4 together with the study of land uses in a steady state. Section 5 examines reform in land tenure and in deforestation costs. The last section concludes with a policy discussion.

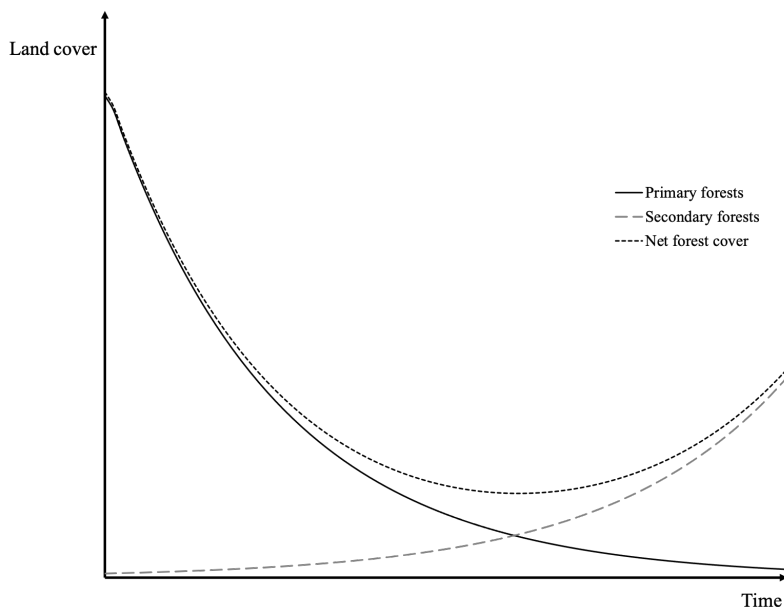
## **2 The forest transition: beyond the “agriculture vs forest” framework**

In this section, we detail the literature related to our paper. In the first part, we discuss studies on forest transition, from seminal papers to recent analyses on their economic causes. In the second part, we present the motivations justifying a distinction between primary and secondary forests on the basis of existing work in different fields.

## 2.1 The forest transition concept

The forest transition concept as introduced by ? refers to the switch from decreasing to expanding forest-area that has been observed in many developed nations in the past, and recently in several developing countries (??). In the transition curve, a long phase of deforestation is followed by a similarly long phase of reforestation. The point where forest cover reaches its minimum is the transition to which we also refer here as the turning point. Figure 1 illustrates the forest transition along with the expected U-shaped path of net forest cover through time.

Figure 1: A decomposition of Mather (1992) Forest Transition



Prior to Mather's seminal paper, different studies reported that the evolution of the forest cover in a country follows a U-shape form. For instance, ? studied the U.S. case, finding that forest cover started decreasing at the beginning of the nineteenth century, then stabilized and increased around the mid-1900s. Forest depletion was at its highest level between 1800 and 1900, and lowered at the beginning of the twentieth century. A forest cover increase occurred around 1920, through net timber growth, as a consequence of the previous decline in standing volume. In France, it occurred over a longer time-period than in the U.S., less forest cover was preserved, and the turning point took place

during the nineteenth century (?). In India, according to data from ?, the turning point occurred around 1960, with a forest cover at the time of about 16 percent of total land. In China, ? mention that only 7 percent of forest cover was left when the turning point occurred a few decades ago.

As suggested by these various cases, the timing and the intensity of forest transitions are particular to each country, and the forest transition approach does not constitute a prediction of what necessarily happens in a country experiencing deforestation. Nevertheless, it allows us to emphasize common features behind the long-term deforestation process in a given country: deforestation, stabilization, reforestation. Yet, this concept does not predict the particularities of those dynamics, which are dependent of each countries' characteristics. Those particularities encompass the pattern and length of the forest transition curve, the nature of the turning point, and the composition of the land use once the transition ends. For instance, a particular country may end deforestation only when all the primary forests have been converted, or may not experience any reforestation.

Different articles, mostly descriptive, have attempted to describe the economic schemes that lead to a forest transition in a country. Based on observations of developed nations, ? explained the occurrence of the turning point using either an economic development or a forest scarcity pathways. The economic development path states that the capital stock formed during agricultural land expansion is reinvested in new, more profitable sectors, which do not require intensive use of forests. Industry-based production increases along with a creation of new urban jobs with higher wages that attract farmers from frontiers to urban areas. Some previously cropped lands therefore return to forest. During this period, governments, who may have become more responsive to ecological and climatic problems, may also implement reforestation programs.

The scarcity path argues that the relative scarcity of land held in forests serves to increase timber prices while leading to potentially high environmental damages due to the lack of forest cover. In order to benefit from the high forest rents and control environmental degradation, large-scale plantations are implemented through investments. The net deforestation rate becomes zero or negative, and the turning point occurs. Additionally,

globalization can favor the end of deforestation (i.e. a turning point) by trading ecological ideologies, new patterns of demand, or by developing tourism (??). Through a study of several developing countries between 1990-2010, ? indeed find that institutional quality also promoted the occurrence of this turning point in many cases, as well as evidence of both the forest scarcity and economic development paths.

As noted in the introduction, previous theoretical economic analysis that considers the dynamics of long-term forest conversion is sparse and has focused mainly on the first deforestation phase in Figure 1, that is, before the turning point is reached (e.g., (???)). Other work prior to these studies include ?, who studied deforestation and agricultural expansion in an economy where cumulative deforestation impacts agricultural yields. The authors notably examined the impact on the deforestation rate of changes in discount rates and marginal returns from agriculture. However, they did not consider different types of forest, tenure costs implications or the application of public policies.

Finally, note that the traditional forest economics literature has developed models that distinguish forest types such as old-growth, natural secondary growth and man-made forests (e.g., (????)). However, their work does not consider agricultural land use or aspects of the forest transition that are important in this paper.

## **2.2 The importance of distinguishing primary and secondary forests**

The absence of secondary forests in theoretical economic discussions of long term deforestation is not consistent with purely empirical studies showing that, during development, primary and secondary forests follow two opposite paths that establish an existence of a turning point. Primary forests tend to decrease while secondary forests increase but this was not clearly defined in Mather's work. ? reported this issue regarding Mather's original description of the forest transition, and rather talked about two separate processes. According to ?, the "national land use transition" corresponds to the large depletion of primary forests, while the "forest replenishment period" corresponds to the period of secondary forest plantations and natural regeneration, also explained in



? and ?. What one must understand here is that the two processes refer to two separate forest stocks (primary and secondary), but not that they are completely independent one from the other. The forest replenishment period may take place because the national land use transition raised forest products' prices (by scarcity effect), or for instance involved environmental issues (biodiversity losses, soil degradation etc.).

Further empirical motivations for our work are provided by ? and ? who analyze data from Amazonia and Asia (China, India and Vietnam), respectively, and claim that the forest transition concept requires refinements notably since they found, on the basis of poor available data at the time, that the net increase of forest cover was largely composed of plantations. Likewise, for public policy purposes, ? also highlight the importance of going beyond the “forest-nonforest dichotomy” within the forest transition concept. They argue that because of differences in ecosystem services attributed to carbon storage capabilities, considering only net forest cover as a policy target would lead to protection of low carbon landscapes. This is in line with the work of ? on carbon and forest biomass, who extend the forest area transition to a forest carbon transition, and also incorporate distinctions between primary and secondary forests in their framework.

The distinction between primary and secondary forests we include in our model also reflects work in climate ecology. ? find that old growth forests can store centuries worth of carbon reserves, and “can continue to accumulate carbon, contrary to the long-standing view that they are carbon neutral”. Regarding carbon dioxide emission, it is therefore more efficient at least over the short and mid-terms to conserve older forests rather than seek to plant new ones. Concerning biodiversity, ? find that tropical forests are home to 50% of the known vertebrates and 60% of plant species. He argues that forests reestablished on current non-forest land as plantations cannot lead to full recovery of all of these species, especially if some agricultural activities took place prior to reforestation. In addition, ? find that primary forests were irreplaceable in their ability to maintain tropical biodiversity.

The conclusion from this literature establishes that secondary forests indeed have a lower marginal environmental value than primary ones in terms of both carbon storage

and biodiversity provision, especially in the short-run. It therefore follows that making a distinction between the types of forest (i.e. primary or secondary forests) is necessary since deforestation of primary forests is irreversible in the sense that replacement by secondary forests leads to imperfect substitutes in terms of the ecosystem services that can be produced from any land unit.

The motivation for our paper thus comes from the following critical observations made in this section: (1) the forest transition concept is a useful tool to understand the long-term dynamics of a country's forest cover; (2) it is important to take into account different types of forests in order to account for known economic and ecological non-substitutability of primary and secondary forests; (3) the theoretical economic literature approaching a forest transition framework only focuses on deforestation and does not consider reforestation, nor the primary-vs-secondary-forests dichotomy; and (4) the economic literature focusing on the links between primary and secondary forest focuses more on the forest sector implications (such as timber markets) and does not investigate either the land use implications of the transition, or the differing land tenure security of the various types of forests and agricultural land.

The ambition of our paper is thus to offer a bridge between the land use and forest clearing articles commonly used to study the dynamics of deforestation. Our model is most closely related to that of ?, but we additionally integrate the double dynamics of deforestation and reforestation, explicitly taking into account the distinction between primary and secondary forests. Our contribution is, in this context, to investigate how a country's particularities may determine several key components of a forest transition, namely (i) the length of the forest transition (speed of deforestation and reforestation); (ii) the remaining forest cover at the turning point (net cumulative deforestation) and (iii) the forest composition once the forest transition is achieved (respective importance of primary vs secondary forests).

## 3 The double dynamics driving the forest cover

### 3.1 The model

Consider a small open economy with a representative land-user allocating a land endowment normalized to one unit to primary forests ( $F_t$ ), secondary forests ( $S_t$ ), and to agriculture ( $1 - F_t - S_t$ ). Initial primary and secondary forest cover is given by  $F_0$  and  $S_0$ , respectively. Because it is the most relevant approach for our research question, throughout the paper we will focus on the study of an economy with high initial primary forest cover  $F_0$ , and low initial agricultural land cover and secondary forest cover  $S_0$ . Agricultural land expansion will thus represent the main driver of forest transition, as empirically observed.

Let  $f(F_t)$  and  $g(S_t)$  be the land rents associated with primary and secondary forests respectively, at any time  $t$ . By primary forests, we mean forests where human activities imply small if any perturbations, and we assume that  $f(\cdot)$  follows the following standard properties:  $f'(F_t) > 0$ ,  $f''(F_t) < 0$ . By secondary forests, we mean forests strongly impacted by human activities, and forests generated by plantations. The function  $g(\cdot)$  is also assumed increasing and strictly concave, that is,  $g'(S_t) > 0$  and  $g''(S_t) < 0$ . Thus, there are three types of forests accommodated in our model: natural old-growth forests, secondary new-growth forests from natural regeneration, and secondary planted forests. In our model, secondary forests encompass both new-growth forests and plantations.<sup>1</sup>

Primary forest rents include the public good value associated with an old-growth standing forest, such as carbon stock, biodiversity benefits, soil protection or water supply. Secondary forests generate rents that include sustainable timber harvesting and public good values such as flows of sequestered carbon, for instance. The differences in rents can be explained by various characteristics or preferences of the representative land user, depending on the value they attach to timber harvesting and forest environmental services.

---

<sup>1</sup>For simplicity, the rent from secondary forests is perceived instantaneously by the representative agent ; in reality there could still be a long delay before reforestation on cleared land yields income from timber harvest.

Finally, let  $h(1 - F_t - S_t)$  be the rents obtained from land under agriculture. In light of the fact that rents take into consideration both timber and public good benefits, in our setting  $f(F_t)$ ,  $g(S_t)$  and  $h(1 - F_t - S_t)$  reveal the preferences of a representative land user toward different sources of rents. With those three, unspecified, rent functions, our model is flexible enough to describe a wide range of very diverse types of forest transition. One can easily see that the marginal rents may for example describe cases in which the representative agent has no interest in forest public goods, which can bring what ? calls “critical transitions”.

The dynamics of deforestation and reforestation are represented by the parameters  $d_t$  and  $r_t$ , both higher or equal to zero by definition. Deforestation of primary forests implies  $d_t > 0$  while positive reforestation implies  $r_t > 0$  in any time period  $t$ . The timber harvested from cleared primary forests is sold at the international price  $p_F$ , which is kept constant without loss, and  $C(d_t)$  is the cost of harvesting  $d_t$  hectares of primary forest at time  $t$ , with  $C'(d_t) > 0$  and  $C''(d_t) > 0$ . Accordingly,  $p_F d_t - C(d_t)$  represents the profit obtained from clearing primary forest and selling wood at price  $p_F$ .

Following empirical facts, there are no tenure costs associated with primary forests in the core version of our model. As well, the cost of securing tenure of agriculture is considered to be zero. Indeed, in most developing countries, deforestation for agricultural purposes is a way to guarantee landowners’ ownership rights and to avoid expropriation, thus giving these landowners a stronger property right than they would have by holding any type of forest land. For example, ? reported that, in Brazil, landowners clear forests to assert the productive use of land and reduce expropriation risk or increase the ease of obtaining permanent title. Furthermore, ? underlines that monitoring forests to protect from illegal harvesting is more costly, which further justify our cost differential. In this context, this literature further justifies an assumption that plantations entail a convex land tenure cost of  $\Phi_t(r_t)$  for  $r_t$  hectares of planted forest at time  $t$ , with  $\Phi'(r_t) > 0$  and  $\Phi''(r_t) > 0$ . This land tenure cost represents the effort devoted to protect the forest investment, which is costlier in countries with low enforcement. Further empirical justification for these costs can be found in ?.

The representative land user agent chooses the deforestation and reforestation paths that maximize net benefits, that is:

$$\max W_{\{d_t, r_t\}} = \int_0^{\infty} [f(F_t) + g(S_t) + h(1 - F_t - S_t) + p_F d_t - C(d_t) - \Phi_t(r_t)] e^{-\delta t} dt \quad (1)$$

Subject to the following constraints reflecting our discussion above:

$$\dot{F}_t = -d_t, \quad (2)$$

$$\dot{S}_t = r_t, \text{ and} \quad (3)$$

$$F_0, S_0 \text{ given; } d_t \geq 0; r_t \geq 0 \quad \forall t. \quad (4)$$

From (1), the current value of the Hamiltonian for the land user's problem is:

$$\mathcal{H} = f(F_t) + g(S_t) + h(1 - F_t - S_t) + p_F d_t - C(d_t) - \lambda_t d_t + \mu_t r_t - \Phi_t(r_t), \quad (5)$$

where  $\lambda_t$  and  $\mu_t$  respectively denote the co-state variables associated with deforestation  $d_t$  and reforestation  $r_t$ . Applying Pontryagin's Maximum Principle enables us to obtain the necessary conditions for the optimal paths of deforestation and reforestation. The first-order conditions with respect to  $d_t$  and  $r_t$  yield:

$$\lambda_t = p_F - C'(d_t), \text{ and} \quad (6)$$

$$\mu_t = \Phi'_t(r_t). \quad (7)$$

Equation (6) defines the condition for primary forest conversion, with the marginal profit from harvesting  $p_F - C'(d_t)$  and the shadow price of the in situ forest stock  $\lambda_t$  at time  $t$ . From (7), the shadow value of secondary forests in situ,  $\mu_t$ , is equals the tenure costs at the margin,  $\Phi'_t(r_t)$ . Indeed, secondary forests are established only when their net rent becomes positive at some point in time. The dynamics of the co-state variables are

given by:

$$\dot{\lambda}_t = \delta\lambda_t - f'(F_t) + h'(1 - F_t - S_t), \text{ and} \quad (8)$$

$$\dot{\mu}_t = \delta\mu_t - g'(S_t) + h'(1 - F_t - S_t). \quad (9)$$

The transversality conditions<sup>2</sup> are:

$$\lim_{t \rightarrow \infty} e^{-\delta t} \lambda_t \geq 0, \lim_{t \rightarrow \infty} e^{-\delta t} [\lambda_t F_t + \mu_t S_t] = 0.$$

From (8), the shadow price of a hectare of primary forest converted to agriculture increases with the marginal net benefit from favoring agriculture at the expense of conserving primary forest,  $h'(1 - F_t - S_t) - f'(F_t)$ . It follows that this shadow price decreases as primary forests become relatively more scarce. Deforestation thus clearly decreases over time and primary forests disappear in an irreversible manner, which is consistent with the forest scarcity path interpretation of the forest transition theory. Moreover, substituting (6) into (8) indicates that deforestation decreases over time if the marginal return to forest conversion decreases.

In contrast, equation (9) states that the marginal cost of converting an additional land unit of agriculture into secondary forests increases with the marginal net benefit of agriculture relative to sustainable secondary forests management,  $h'(1 - F_t - S_t) - g'(S_t)$ . Again, using (7) into (9) indicates that reforestation increases over time if the marginal land tenure costs decrease.

The optimal paths of deforestation and reforestation from (6) and (7) can now be obtained as:

$$-C''(d_t)\dot{d}_t = h'(1 - F_t - S_t) - f'(F_t) + \delta[p_F - C'(d_t)], \text{ and} \quad (10)$$

$$\Phi_t''(r_t)\dot{r}_t = h'(1 - F_t - S_t) - g'(S_t) + \delta\Phi_t'(r_t). \quad (11)$$

---

<sup>2</sup>As in a standard Hotelling framework with an infinite time horizon, the transversality conditions are necessary conditions that must hold along with the maximum principle conditions to guarantee an optimal path for forest conversion (e.g., see ?).

The time path of deforestation depends on the rate of change in relative rents to agricultural clearing net of the loss in public goods values from cleared primary forests (first two terms on the right hand side of equation 10), in addition to the interest cost of not clearing land in terms of net rents for clearing primary forests (last term on the right hand side of equation 10). Equation (11) shows that the rate of reforestation is determined as a condition that equates the marginal benefits of secondary forest revenues (second term on the right-hand side) net of marginal benefits of cleared land used instead for agriculture (first term on the right-hand side) plus marginal land tenure costs (third term on the right-hand side). The point in time where these paths cross, which is unique owing to convexity and concavity assumptions and is investigated later, clearly depends on changes in rents to all land uses over time as well as the important land tenure costs that must be incurred to secure secondary forests.

### 3.2 Numerical assumptions and cases of preference

The results given previously are general. Yet, as our model is highly nonlinear and the relationships between costs are critical, we turn to numerical simulation. A key part of our numerical results is the assumption concerning the form of the welfare function that makes up the objective functional in our dynamic optimization problem above. A convenient explicit form of our welfare function is:

$$W = \int_0^T [\alpha \ln F_t + \beta \ln S_t + (1 - \alpha - \beta) \ln(100 - F_t - S_t) + p_F d_t - \frac{1}{2}(d_t)^2 - \lambda_t d_t - \frac{1}{2}(r_t)^2 + \mu_t r_t] e^{-\delta t} dt. \quad (12)$$

The parameter  $\alpha$  in (12) is a land user preference indicator for holding and not deforesting primary forests over time, while  $\beta$  is a preference indicator for establishing secondary forests; thus, the preference for clearing land for agriculture in a relative sense is:  $1 - \alpha - \beta$ . By assumption:  $0 < \alpha + \beta < 1$ .

Choosing different cases of preferences (or rents) will allow us to study different empirical cases. For instance, it is likely that Brazil currently has a higher degree of preference

regarding its stock of primary forests than the UK had in its industrialization period. Indeed, before its relatively light period of reforestation, the UK did almost fully deforest its forest cover. The fact that Brazil is involved in public policies to reduce emissions from deforestation may point out this difference in preferences between the two countries. Either case is covered in our model. Another specific example comes from Bhutan and its forest legislation. The latter imposes a minimum of 60% forest cover at the national scale (?), because of beliefs related to global well-being. This follows in our model by assuming a higher  $\alpha$  and  $\beta$ . Finally, the cost functions  $C(\cdot)$  and  $\Phi_t(\cdot)$ , respectively the costs of deforesting and securing the reforested lands, are convex and are assumed to have the same form as in ?:  $C(d_t) = \frac{1}{2}(d_t)^2$  and  $\Phi(r_t) = \frac{1}{2}(r_t)^2$ .

As for the general form, by solving the problem given in (12), we can obtain from the first-order conditions two sets of equations expressing the inherent land use competition between agriculture and each type of forest:

$$\frac{1 - \alpha - \beta}{100 - S_t - F_t} = \frac{\alpha}{F_t} - \dot{d}_t - \delta(p_F - d_t), \text{ and} \quad (13)$$

$$\frac{1 - \alpha - \beta}{100 - S_t - F_t} = \frac{\beta}{S_t} + \dot{r}_t - \delta r_t. \quad (14)$$

Equations (13) and (14) also tell us the deforestation and reforestation rates along the forest transition. Table 1 provides the parameters that differentiate various cases. Case 1 is the benchmark case, where the representative land user assigns more weight to agriculture and is indifferent between primary and secondary forests. This is the usual way development has proceeded in countries with forests. Other cases are used to examine the various drivers of the model. Notice that the variations of land tenure costs (cases 4 and 5) are built on the benchmark case (case 1). Indeed, a larger preference for agriculture, consistent with a lower  $\alpha$  and  $\beta$ , is more prevalent in a developing economy, whose tenure is costly to secure unless land is cleared.



## 4 Analyzing the patterns of the forest transition

We now examine resource stocks and the forest transition under the different cases discussed above: first, the speed of the forest transition is analyzed; second, the size of the forest resources stock is considered when deforestation ceases, i.e., at the turning point; third, forest composition is analyzed when the economy reaches a steady state. Finally the influence of marginal rents and tenure costs on stock are also examined. As we will show, these features are all necessary to completely describe the forest transition.

### 4.1 Speed of deforestation and reforestation in the transition

From (10), the speed at which primary forests are deforested decreases with rents from primary forests, increases with preferences for agriculture (or agricultural rent), and increases with net marginal benefit of forest conversion. Equation (11) shows that the speed of reforestation increases with preferences for secondary forests (or secondary forests rent), decreases with preferences for agriculture, and decreases with marginal land tenure costs. From these results, the following proposition can be inferred:

**Proposition 1.** *The turning point occurs earlier in time when the marginal benefits from forest conversion and rents from secondary forests are high. The effect of agricultural preferences is ambiguous, as it increases the speed of deforestation, but reduces the speed of reforestation. Finally, the turning point arrives sooner when tenure costs on secondary forests are lower.*

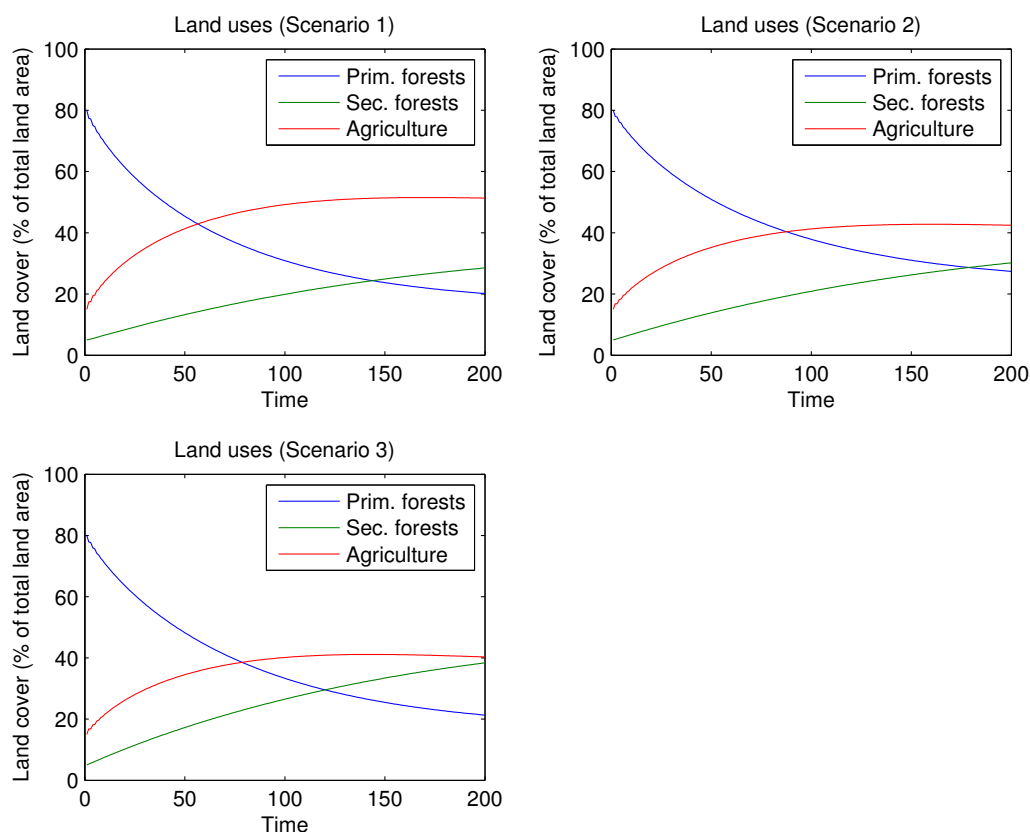
Table 1: Parameter values

Description	Case	$\alpha$	$\beta$	$(1 - \alpha - \beta)$	Land tenure costs
Pref. for agriculture	1	0.3	0.3	0.4	$\frac{1}{2}(r_t)^2$
Pref. for prim. forests	2	0.4	0.3	0.3	$\frac{1}{2}(r_t)^2$
Pref. for sec. forests	3	0.3	0.4	0.3	$\frac{1}{2}(r_t)^2$
Increasing tenure costs	4	0.3	0.3	0.4	$(r_t)^2$
Decreasing tenure costs	5	0.3	0.3	0.4	$\frac{1}{4}(r_t)^2$

Figure 2 illustrates these results. Referring to the benchmark case in the figure, agricultural land area surpasses 50% of total land area by 100 time-periods. The turning point occurs just before time-period 150. While the initial stock of primary forest covers 80% of total land, it ends up at a level of only 20% after 200 time-periods.

In cases 2 and 3, the relative preference is given to forests, either primary or secondary (see Table 1). Overall, we note that deforestation proceeds more slowly than in the benchmark case. We also observe that case 2, when primary forests provide the highest rents relatively to agriculture and secondary forests, leads to a longer transition in time (i.e., later occurrence of a turning point) and this ultimately results in a preservation of more primary native forest cover. This suggests that while the period of net deforestation is longer, more biodiversity contained in primary forests is preserved.

Figure 2: Variation in land uses under different preferences



## 4.2 Analyzing forest cover at the turning point

As described in Section 2, the turning point is of particular importance in forest transition theory. At this point, net forest cover no longer decreases and reforestation compensates for deforestation. Two characteristics of the turning point can be considered in our model. The first is forest cover at the turning point, which gives an indication of the cumulative nature of deforestation during the development phase. Second, the time at which the turning point occurs is important as it indicates the length of the net deforestation (deforestation minus reforestation) phase.

The turning point takes place when the gain in secondary forest offsets the loss of primary forests, assuming that there is a unique point upon initial endowments, this takes place when  $d_t = r_t$  and provided that  $\Phi''(r_t) = C''(d_t) = 1$ . Using this expression with (8) and (9) yields:

$$f'(F_t) + g'(S_t) = 2h'(1 - F_t - S_t) + \delta[p_F - C'(d_t) + \Phi'_t(r_t)]. \quad (15)$$

Equation (15) shows that the turning point between primary and secondary forests occurs when the double marginal return from agriculture equals the total marginal rents from all forest cover, minus the discounted profit from primary forest timber sale and the marginal cost of land tenure. This result is consistent with the scarcity path of the forest transition theory. Indeed, we see that the turning point occurs when the marginal value associated with forests equals that of converting.

As a conclusion, the forest stock at the turning point is higher when preferences and rents for primary and secondary forests are higher, and lower when timber price or preferences for agriculture are higher.

This result is confirmed by our simulations. It is straightforward to see from case 2 that the turning point occurs at a lower forest cover when preferences for agriculture are stronger. Propositions 1 and 2 therefore bring some interesting insights about the turning point: higher rents on primary forests decrease the speed of deforestation and postpone turning point occurrence, and they increase the forest stock once this turning point is

achieved; higher rents on secondary forests, in contrast, imply that turning points are reached quicker.

### 4.3 Role of land use and tenure costs to the length of the transition

In assessing transition length, our analysis uncovers two important issues: land-user preferences and land tenure costs. Another interesting piece of information comes from revisiting the length of the forest transition. From equation (15), *ceteris paribus*, a slower speed of deforestation indicates a longer transition, in the sense that it takes longer for the deforestation rate  $d_t$  to equal that of reforestation  $r_t$ . The same type of reasoning can be made with reforestation: a slower speed of reforestation results in longer transition.

We can therefore reason that the length of forest transition increases with preferences for primary forests and decreases with the marginal benefit from primary forest conversion, since they decrease the speed of deforestation. Further, the forest transition length decreases with preferences for secondary forests and increases with marginal land tenure costs, which increase the speed of reforestation. Finally, the forest transition length may either increase or decrease with preferences for agriculture, since this increases both the speed of deforestation and decreases the speed of reforestation.

This result is visible in our simulations. Case 2 results in a lower rate of deforestation. In the same manner, when preferences for secondary forests are low, the reforestation rates are lower. Finally, when the preferences for agriculture are low, they tend to decrease the deforestation rate and to increase the reforestation rate. The combination of these three effects produces a longer forest transition.

In contrast, case 3 presents a relatively short forest transition. Here, higher preferences for secondary forests increase the speed of reforestation. Conversely, low preferences for primary forests increase the speed of deforestation. Lower agricultural preferences increase the reforestation rate and decrease the deforestation rate. In sum, a shorter forest transition results.

Our findings provide interesting and unexpected insights into the cumulative nature of deforestation. Indeed, when preferences for primary forests are higher, the net deforestation phase lasts longer, yet the cumulative amount of deforestation will be smaller. Thus, having positive net rates of deforestation is not necessarily critical for a country: it may simply mean that the forest transition phase will be longer, but with lower cumulative deforestation. In the same manner, high deforestation rates may suggest that the forest transition will appear more rapidly and potentially end with smaller cumulative deforestation. These are key results and suggest that the timing of policy aimed at reducing deforestation is much more complicated than previously thought.

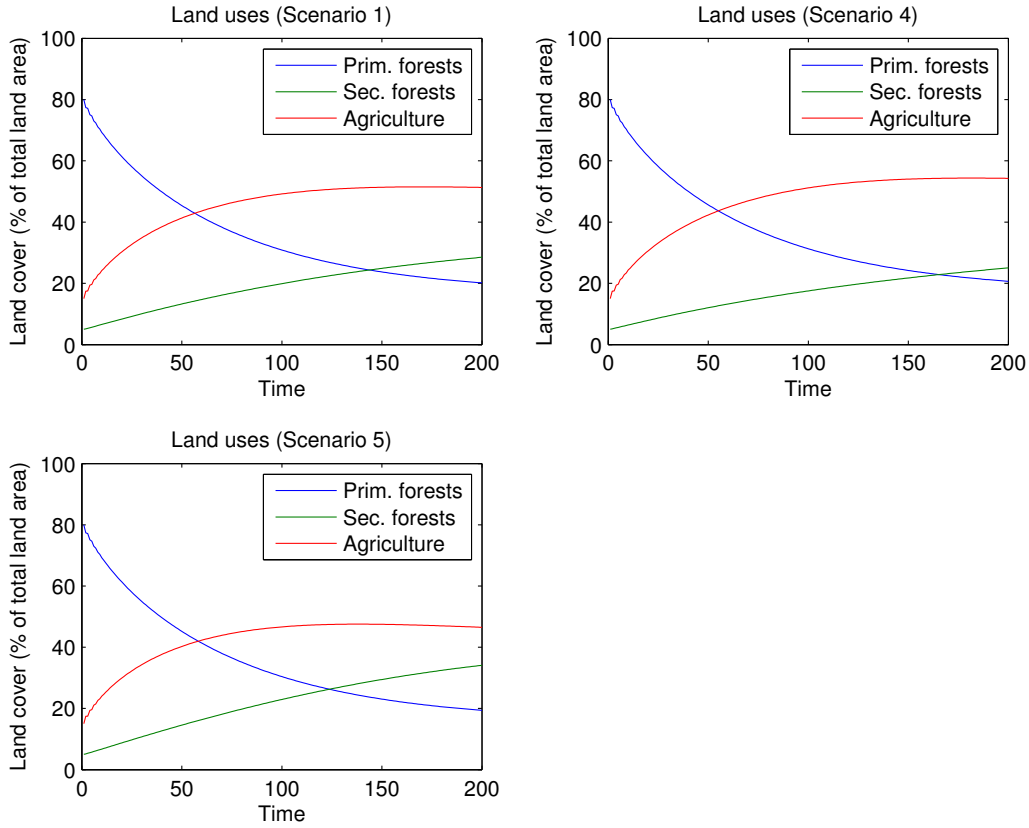
The magnitude of tenure cost also influences the length of transition. Equation (15) and Figure 3 illustrate this. The occurrence of the turning point is clearly affected by the land tenure costs. An increase in these costs (case 4) delays the turning point in forest cover relative to the reference case (case 1); the turning point occurs around 20 time-periods later. On the contrary, not only does a decrease in these costs (case 5) significantly accelerate the occurrence of the turning point, but it appears at a time-period with a higher total forest cover. This result is particularly relevant for public policies such as REDD+. Obviously, one way to accelerate transitions in developing countries is to reinforce property rights and political stability in order to decrease tenure costs.

In all, and from a long term perspective, our model establishes that focusing only on current deforestation rates may be misleading in terms of predicting the final result of cumulative deforestation, and it is this final result that is of most interest to the rest of the world. We now provide an analysis of the steady states.

#### 4.4 Steady state analysis

Studying the steady state is of particular interest since it is likely that a given country reaches this condition after development. For example, France experienced its turning point during the 19<sup>th</sup> century, while the US reached it in the early 1900s, and the forest

Figure 3: Change in land tenure costs



cover of both countries can therefore be considered as stationary from the perspective of the forest transition hypothesis.

Before the stationary point is reached, our model shows that clearing an additional hectare of primary forests provides  $h'(1 - F_t - S_t) + \delta\lambda_t$ , while sustainable primary forests management gives  $f'(F_t) + \dot{\lambda}_t$ . Likewise, an additional hectare of secondary forests yields  $g'(S_t) + \dot{\mu}_t$  while agriculture gives  $h'(1 - F_t - S_t) + \delta\mu_t$ . The steady state is given by  $\dot{F}_t = \dot{\lambda}_t = 0$  and  $\dot{S}_t = \dot{\mu}_t = 0$ . With  $C'(0) = \Phi'(0) = 0$ , in the steady state the marginal benefit from converting a hectare of natural old-growth forest is:  $\delta p_F + h'(1 - F_\infty - S_\infty)$ , which equals the marginal return from conserving primary forest  $f'(F_\infty)$ .

Concerning the dynamics of secondary forests, the steady state can be written as the equality of the marginal rents from a hectare of agriculture  $h'(1 - F_\infty - S_\infty)$  and the marginal rents of a hectare of plantations  $g'(S_\infty)$ . The representative agent is then

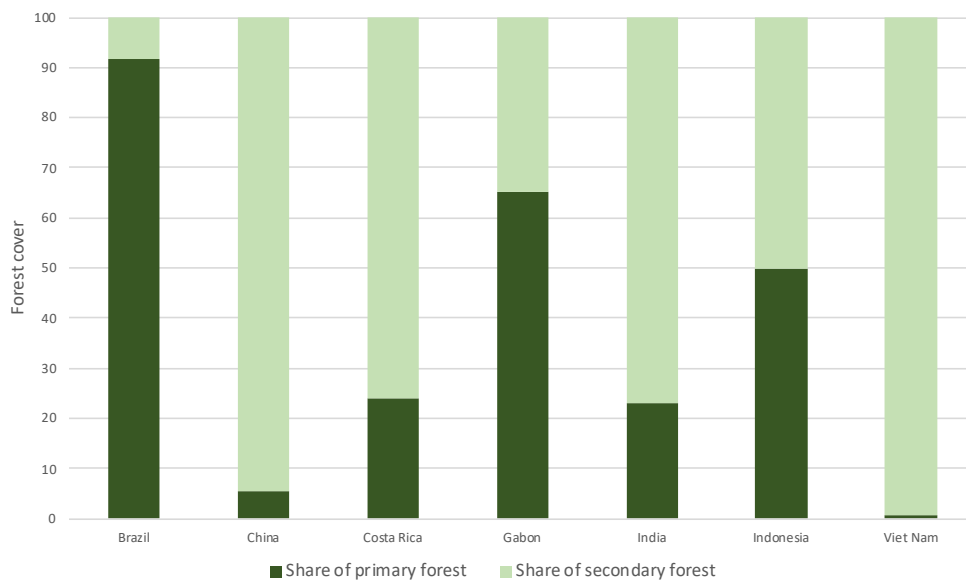
indifferent between allocating an additional hectare of land either to agriculture or to the secondary forests.

Equalizing the steady states of the two types of forests by the marginal return from agriculture  $h'(1 - F_\infty - S_\infty)$  yields:

$$f'(F_\infty) - \delta p_F = g'(S_\infty). \quad (16)$$

This result shows that, in the steady state, the marginal benefit from secondary forests equals that of primary forests minus the discounted sale price of timber obtained from clearing primary forests. This can be explained by the delay between the period of planting and realization of high ecosystem service benefits. Equation (16) implicitly also describes the tradeoff between primary and secondary forests. It follows that forest composition differs when preferences lean toward primary or secondary forests. As a result, total forest cover in the steady state is composed of both primary and secondary forests that depends on the relative preferences for primary and secondary forests. Figure 4 provides some illustrative data on this point.

Figure 4: Forest composition in 8 developing countries in 2010



Data Source: Global Forest Resources Assessment 2010

Costa Rica and Vietnam, which just passed the turning point, have a significantly different forest composition. According to the Forest Resources Assessment from ?, in Vietnam almost no primary forests were saved during the transition.<sup>3</sup> Since this type of forest can be viewed as a nonrenewable resource, its land area can only be equal or lower in the steady state. We can deduce the following proposition.

**Proposition 2.** *The remaining forest cover at the steady state positively depends on the agent's preferences for primary and secondary forests, and negatively depends on its preference for agriculture. The forest cover at the steady state is composed of both primary and secondary forests. This composition depends on the agent's relative preferences between the two forest types.*

When primary forests are preferred, such as in cases 2 and 3, they represent a larger share of the forest cover in the long run. This result clearly indicates the validity and the importance of separately considering the dynamics of deforestation and reforestation as we do in our model. Indeed, when considering preferences for forests without distinguishing between their types, one would miss this composition effect. We can also argue that, despite similar total forest covers, case 2 is preferable in terms of biodiversity and carbon stocks, while case 3 better performs in terms of timber harvesting.

## 5 Public policies: an application to institutional reforms

The REDD mechanism (Reducing Emissions from Deforestation and forest Degradation) was officially created during the Bali (2007) and Copenhagen (2009) Conferences Of the Parties (COP), with an objective to protect the world's remaining primary forests (?). Since the Cancun COP in 2010, REDD became REDD+, as it was decided to integrate activities enhancing carbon stocks and promoting sustainable forest management. REDD+ is based on three phases. During the first one, countries have to define

---

<sup>3</sup>As assumed in our model, the share of secondary forests includes both regenerated and planted forests. Primary forests refer to intact forest landscapes.



a national strategy, with the support of grants. This is very similar in our model to a determination of the weights that each country assigns to native forests relative to other forests and non-forest land. Most countries are currently in this phase. During the second phase, participants have to implement their REDD+ strategies, and to develop policies and measurements. Finally, countries will receive payments for avoided deforestation and low-carbon developments efforts during the last phase.

Forests are explicitly considered in article 5 of the Paris convention, where result-based payments are mentioned: "Parties are encouraged to take action to implement (...) through results-based payments, the existing framework (...): positive incentives for activities relating to reducing emissions from deforestation and forest degradation, and the role of conservation, sustainable management of forests and enhancement of forest carbon stocks in developing countries" (?). While many REDD+ projects take place at the local level, the REDD+ approach was initially created for an implementation at the national level. This is what we focus on with our model.

In this section, we consider two policy options related to our model: reducing the land tenure costs and increasing the cost of deforestation. The idea behind those two options is not to perfectly fit with the actual REDD+ implementation, but rather to obtain a broad overview of the incentives provided by REDD+ policies with the implicit objective of increasing the costs of deforestation or boosting reforestation.

## 5.1 Land tenure costs reduction

Consider the implication of a significant decrease in land tenure costs. Basically, we study a situation where it is assumed that property rights are absent, as they are in frontier tropical forest areas where the transition is important, and where secondary forests are still considered a lower valued use to agriculture by government laws. Thus, the costs of "tenure security" that we use in our model represent costs that a private land user must spend to secure protection for various types of land; these costs are representative of what an individual land user needs to spend in order to protect their investments in the absence of property rights protections by the government for forests.

This type of reduction may come from the first phase of REDD+ implementation where strengthening tenure security is frequently mentioned as a key element before carbon redistribution. Moreover, previous results confirm that public policies should be targeted toward improving land institutions in order to retard deforestation (e.g., ??).

For this reason, we now revisit tenure costs in our model. We present two programs of public policies in complement to our benchmark case. Table 2 details the policy programs we examine.

Table 2: Parameter values for policy programs of land tenure reductions

Description	Land tenure costs	Interval	Land tenure costs	Interval
Benchmark	$\frac{1}{2}(r_t)^2$	[0,200]	-	-
Program 1	$\frac{1}{2}(r_t)^2$	[0,70[	0	[70,200]
Program 2	$\frac{1}{2}(r_t)^2$	[0,10[	0	[10,200]

For comparison purposes, preferences are assumed equal for the three cases, based on the benchmark ( $\alpha = \beta = 0.3$  and  $(1 - \alpha - \beta) = 0.4$ ). The first policy program is implemented halfway to the transition point and could correspond to countries such as Brazil or Indonesia. The second policy program is implemented earlier on the downward sloping arm of the forest transition curve, and could correspond to countries with a lower level of historical deforestation, such as the Democratic Republic of Congo or Gabon. The representative land user is assumed to face zero tenure costs under application of one of the programs.

Results are given in Table 3. It is important to note here that numerical results have no significance per se (in terms of per hectare values for instance), but they are useful to give an idea on the qualitative interpretation of our model. Adding the shares of both types of forest at the end of forest transition ( $t = 200$ ), we find that programs 1 and 2 allow a country to preserve more total forest cover during development than in the benchmark case. This shows the effectiveness of the public policy. Also, when any program is implemented, net forest depletion halts earlier than in the benchmark (i.e. the turning point occurs earlier).

Two effects have to be distinguished. First, the policy has a direct effect of boosting reforestation. Since it is implemented at time-period 10, program 2 always provides the best output in terms of reforestation. This therefore ends net emissions from forestry earlier than in the benchmark case. It is interesting to note the cumulative nature of reforestation here (last line of table 3). In terms of carbon balance, the second program is preferable to the first one, as the public policy of reforestation is set up earlier, which is more valuable in terms of carbon benefits. This result underlines the need to implement forest policies earlier during the transition, in order to benefit from the sequestration effect.

Second, the policy has an indirect effect on deforestation. Indeed, the more aggressive is the policy reform to tenure costs for reforestation (Program 2 > Program 1 > Benchmark), the lower is the amount of primary forests at the end of the transition ( $t = 200$ ). Also, the difference between the total area of primary forests with and without the program  $\sum_t(F_t - F_t^{BAU})$  shows a loss of 11.9 and 31 land units in programs 1 and 2, respectively. These losses correspond to carbon releases due to deforestation. Then, under our assumptions, a public policy favoring reforestation also promotes deforestation of primary native forests. This corresponds to empirical observations. Given this indirect effect of the public policy, one must be careful when designing a REDD+ strategy, since it can be harmful for primary native forests that have the highest ecological value.

Finally, examining welfare in the economy, we find logically that the earlier the program is implemented (i.e. the further away from the transition), the higher is the level of welfare. This is explained by the fact that the REDD+ program removes a financial cost for the representative agent of the recipient economy. Assuming that the implementation

Table 3: The impact of reductions in tenure costs

	Benchmark	Program 1	Program 2
$F_{t=200}$	20.2	20.0	19.9
$S_{t=200}$	28.5	29.9	30.1
Turning point time-period	144	140	136
$\sum_t(F_t - F_t^{BAU})$	-	-11.9	-31.0
$\sum_t(S_t - S_t^{BAU})$	-	121.6	199.7

of the program is costless for the representative land user, the difference in welfare between the economy under *laissez-faire* and the economy with REDD+ represents a social cost of not protecting the forests. The later the program is implemented, the higher is this cost.

## 5.2 Increasing the costs of deforestation

Now consider the implication of an increase in the cost of deforestation,  $C(d_t)$ . We compare our BAU case with two cases where deforestation costs are double at different times. Table 4 details the policy programs we examine.

Table 4: Parameter values for policy programs of increasing deforestation costs

Description	Deforestation costs	Interval	Deforestation costs	Interval
Benchmark	$\frac{1}{2}(d_t)^2$	[0,200]	-	-
Program 3	$\frac{1}{2}(d_t)^2$	[0,70[	$d_t^2$	[70,200]
Program 4	$\frac{1}{2}(d_t)^2$	[0,10[	$d_t^2$	[10,200]

For comparison purposes, we keep preferences unchanged ( $\alpha = \beta = 0.3$  and  $(1 - \alpha - \beta) = 0.4$ ). The reform targeting primary forests is implemented at time-period 10 and 70. The increase in the cost of deforestation may correspond to different possible actions, such as the implementation of protected areas, the use of monitoring/measuring, reporting, and verifying systems or an increase of decentralization associated with a higher control of corruption. It may also globally correspond to a reduction in access to primary forests, for example by framing the construction of new roads. Results are given in table 5.

Table 5: The impact of increasing deforestation costs

	Benchmark	Program 3	Program 4
$F_{t=200}$	20.2	20.7	21.2
$S_{t=200}$	28.5	28.4	28.1
Turning point time-period	144	157	182
$\sum_t(F_t - F_t^{BAU})$	-	89.4	378.9
$\sum_t(S_t - S_t^{BAU})$	-	-11.0	-63.2

Again, the simulations allow us to identify both direct and indirect effects. Indeed, the rise in deforestation costs increases the stock of primary forests. For example, in Program

4, we find that compared to the benchmark, 378.9 units of primary forests cover are saved over the total transition. The indirect effect logically affects the stock of secondary forest, with a loss of 63.2 units reflecting the land use competition between the two forest types.

This is important to consider it for REDD+, in order to reach the most valuable ecological outputs, depending on a country's context. Intuitively, in countries such as Guyana or the Democratic Republic of Congo, with a significant share of primary forests remaining, the REDD+ national strategy should target deforestation costs. Favoring plantations through a tenure cost reform could be harmful for old-growth natural forest that contains the largest quantity of biodiversity and carbon stock. Additionally, under some circumstances, policies to block deforestation in some areas can have positive spillovers leading to natural regeneration in surrounding areas, as ? found for the Brazilian Amazon.

On the contrary, in countries where only a low quantity of primary forests remains, targeting deforestation costs would be ineffective. In those countries, a policy of land tenure costs reduction seems more appropriate. Eventually, it is important to keep in mind that despite the presence of an indirect effect, all policy programs lead to an increase in total forest area (primary and secondary forests taken together), and a decrease of total agricultural area, in comparison with the benchmark case.

## 6 Concluding remarks

In this paper, we introduced in a model several aspects of the deforestation and reforestation dynamics that describe the forest transition in a developing economy. Doing this allowed us to analyze forest cover change through the entire development process of a country, and thus to better understand cumulative deforestation. Critical characteristics of forest transitions, that are particular to every country, have been analyzed. Those include the length of the transition sequence, the turning point, the forest composition in the long run or the role of land tenure costs. We did so by explicitly integrating the crucial distinction between primary and secondary forests, as these have different properties and

may contribute differently to economic welfare. While the usual “forest vs. agriculture” framework is key to understand the patterns of forest loss and long-term deforestation, our work shows that going beyond this simple trade-off can deliver important insights.

Our first result was about the speed of deforestation and reforestation along the economy’s development. In our model, it can be analyzed through the evolution of the marginal rents associated with the different forest types relative to that of agriculture. The speed of deforestation is further determined by the marginal benefit of land conversion, while the speed of reforestation decreases with land tenure costs at the margin. We showed that, in our model, the turning point occurs when the marginal rents from the total forest cover *in situ* equal those of agricultural and commercial uses. It provides policy insights on how to end net forest losses in a developing economy, and it does so by explicitly distinguishing forest types.

Second, we highlighted an important composition effect for forest cover in steady state. In particular, we find that this composition depends critically on the decision maker’s preferences. With a higher preference for primary forests, our results suggest that more biodiversity will be preserved over development, for example as opposed to a plantation strategy that would favor carbon sequestration. This composition effect can help understanding how development paths can lead to a same given level of preserved forest cover, but with different environmental outputs that are more or less desirable.

Our final two other results suggested that a country’s net deforestation rates should be cautiously analyzed. Indeed, even if the turning point occurs further out in time, it can be characterized by higher ecological benefits and less cumulative deforestation. In our model, this was the case when preferences for primary forests were higher, or when a public policy addressing deforestation costs was implemented. Further, we found that net deforestation ends earlier in time when a country’s preferences are moving toward more secondary forests. Data from FAO on secondary forests seem to confirm these findings (see Figure 5 in Appendix A).

By identifying direct and indirect effects of different policies, our results suggest that programs promoting conservation and preventing from deforestation of old-growth forests

(i.e., an increase in deforestation costs in our model) may be particularly relevant in countries distant from the turning point. On the contrary, countries at the turning point could aim to raise reforestation. In line with our findings and according to the assumptions of our model, despite possible indirect effects, public policies in those countries could also continue to be founded on reducing the transaction and direct costs of securing tenure to promote the growth of secondary forests, especially as the amount of primary native forests remaining may already be very low.

In sum, from a long-term perspective, it is important to consider the different types of forests at stake when analyzing the links between economic development and deforestation. While relying on historical net deforestation rates can be misleading, policies incorporating the distinction between the deforestation and reforestation dynamics may prove to be particularly efficient in order to preserve forests in a developing economy.

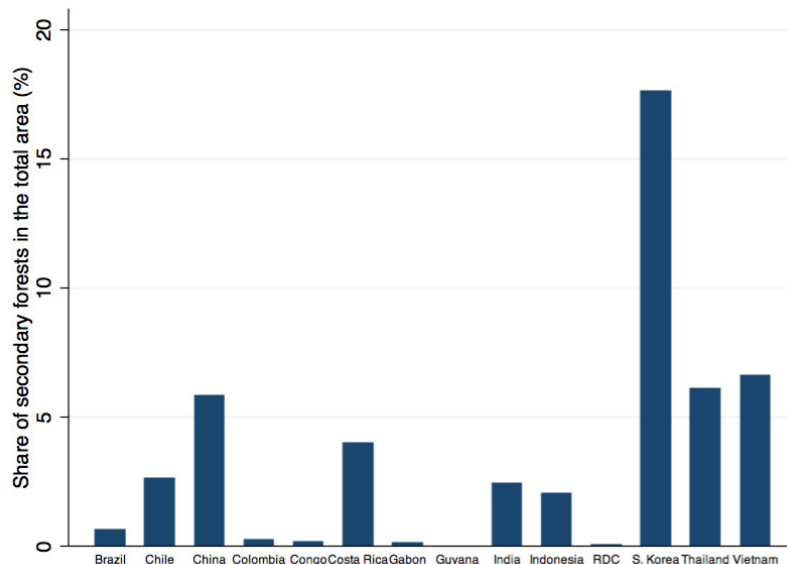
## References



## Appendix A Secondary forests in selected countries

Figure 5 presents data on secondary forests in 14 developing countries.

Figure 5: Secondary forests in 14 countries (year 2000)



Data source: FAO (FRA2010, Table 9)

Countries experiencing a turning point are also the ones where the share of reforestation is important. The examples of China, Costa Rica, South Korea and Vietnam highlight this effect. In addition, some countries considered as being close to the turning point, (e.g. Chile, Thailand) have larger shares of secondary forests than countries identified as distant from the turning point, e.g. Gabon or the Democratic Republic of Congo.