



HAL
open science

Regional climate moderately influences species-mixing effect on tree growth-climate relationships and drought resistance for beech and pine across Europe

Géraud de Streel, François F. Lebourgeois, Christian Ammer, Ignacio Barbeito, Kamil Bielak, Andres Bravo-Oviedo, Gediminas Brazaitis, Lluís Coll, Catherine Collet, Miren del Río, et al.

► To cite this version:

Géraud de Streel, François F. Lebourgeois, Christian Ammer, Ignacio Barbeito, Kamil Bielak, et al.. Regional climate moderately influences species-mixing effect on tree growth-climate relationships and drought resistance for beech and pine across Europe. *Forest Ecology and Management*, 2022, 520, pp.120317. 10.1016/j.foreco.2022.120317 . hal-03880260

HAL Id: hal-03880260

<https://agroparistech.hal.science/hal-03880260>

Submitted on 14 Dec 2022

HAL is a multi-disciplinary open access archive for the deposit and dissemination of scientific research documents, whether they are published or not. The documents may come from teaching and research institutions in France or abroad, or from public or private research centers.

L'archive ouverte pluridisciplinaire **HAL**, est destinée au dépôt et à la diffusion de documents scientifiques de niveau recherche, publiés ou non, émanant des établissements d'enseignement et de recherche français ou étrangers, des laboratoires publics ou privés.

Regional climate moderately influences species-mixing effect on tree growth-climate relationships and drought resistance for beech and pine across Europe

Géraud de Streel^a, François Lebourgeois^b, Christian Ammer^c, Ignacio Barbeito^d, Kamil Bielak^e, Andres Bravo-Oviedo^f, Gediminas Brazaitis^g, Lluís Coll^h, Catherine Colletⁱ, Miren del Río^j, Jan Den Ouden^k, Lars Drössler^l, Michael Heym^m, Václav Hurtⁿ, Viktor Kurylyak^o, Magnus Löf^p, Fabio Lombardi^q, Bratislav Matovic^r, Renzo Motta^s, Leonid Osadchuk^t, Maciej Pach^u, M.G. Pereira^v, Hans Pretzsch^w, Roman Sitko^x, Jerzy Skrzyszewski^u, Vit Sramek^y, Kris Verheyen^z, Tzvetan Zlatanov^{aa}, Quentin Ponette^a

^a Université catholique de Louvain, Faculty of Bioscience Engineering & Earth and Life Institute, Louvain-la-Neuve Belgium - geraud.destreel@uclouvain.be/geraud.ds@gmail.com (corresponding author); quentin.ponette@uclouvain.be

^b Université de Lorraine, AgroParisTech, INRAE, UMR Silva, Nancy, France - francois.lebourgeois@agroparistech.fr

^c Department of Silviculture and Forest Ecology of the temperate Zones, University of Göttingen, Germany - Christian.Ammer@forst.uni-goettingen.de

^d Southern Swedish Forest Research Centre, Swedish University of Agricultural Sciences, Alnarp, Sweden - ignacio.barbeito@slu.se

^e Department of Silviculture, Warsaw University of Life Sciences, Poland - kamil.bielak@wl.sggw.pl

^f Dept. Biogeography and Global Change. National Museum of Natural Sciences, Madrid, Spain - bravo@mncn.csic.es

^g Vytautas Magnus University, Kaunas, Lithuania - gediminas.brazaitis@vdu.lt

^h Department of Agriculture and Forest Engineering, University of Lleida – Joint Research Unit CTFC-AGROTECNIO, Spain - lluis.coll@ctfc.es

ⁱ Université de Lorraine, AgroParisTech, INRAE, UMR Silva, Nancy, France - catherine.collet@inrae.fr

^j 1./ Department of Forest Management and Dynamics. Forest Research Centre, INIA. Ctra. La Coruña, km 7.5. 28040 Madrid. Spain.
2./ Sustainable Forest Management Research Institute, Universidad de Valladolid & INIA, Palencia, Spain - delrio@inia.es

^k Forest Ecology and Forest Management, Wageningen University of Environmental Sciences, Wageningen, The Netherlands - Jan.denOuden@wur.nl

^l [Institute of Ecology, Ilia State University](#), Tbilisi, Georgia - lars.drossler@iliauni.edu.ge

^m Bavarian State Institute of Forestry, Freising, Germany - Michael.Heym@lrz.tum.de

ⁿ Seedling, arboretum and ornamental greenery center, Mendel University, Brno, Czech Republic - vaclav.hurt@slpkrtiny.cz

^o Department of Forest Management, Ukrainian National Forestry University, Lviv, Ukraine - vikur@ukr.net

^p [Centre of Southern Swedish Forest Research, Swedish University of Agricultural Sciences](#), Uppsala, Sweden - Magnus.Lof@slu.se

^q [Department of Agricultural Science, Mediterranean University of Reggio Calabria](#), Reggio Calabria, Italy - fabio.lombardi@unirc.it

^r Institute of Lowland Forestry and Environment, University of Novi Sad, Novi Sad, Serbia - bratislav.matovic@uns.ac.rs

^s Dept. of Agricultural, Forest and Food Sciences DISAFA, University of Turin, Italy - renzo.motta@unito.it

^t Department of Botany, Wood Science and Non-timber Forest Resources, Ukrainian National Forestry University, Lviv, Ukraine - leosad@meta.ua

^u Department of Forest Ecology and Silviculture, University of Agriculture, Krakow, Poland - rlpach@cyf-kr.edu.pl; rskrzysz@cyf-kr.edu.pl

^v [Centro de Investigação e de Tecnologias Agroambientais e Biológicas \(CITAB\), Universidade de Trás-os-Montes e Alto Douro](#), Vila Real, Portugal - gpereira@utad.pt

^w Chair of Forest Growth and Yield Science, TUM *School of Life Sciences* in Freising Weihenstephan, Technical University of Munich, Freising, Germany - hans.pretzsch@tum.de

^x Department of Forest Resource Planning and Informatics, Faculty of Forestry, Technical University in Zvolen, Zvolen, Slovakia - sitko@tuzvo.sk

^y Forestry and Game Management Research Institute, Opocno, Czech Republic - sramek@vulhm.cz

^z Forest and Nature Lab, Ghent University, Melle-Gontrode, Belgium - Kris.Verheyen@ugent.be

^{aa} Institute of Biodiversity and Ecosystem Research, Bulgarian Academy of Sciences, Sofia, Bulgaria - tmzlatanov@gmail.com

Abstract

Increasing species diversity is considered a promising strategy to mitigate the negative impacts of global change on forests. However, the interactions between regional climate conditions and species-mixing effects on climate-growth relationships and drought resistance remain poorly documented.

In this study, we investigated the patterns of species-mixing effects over a large gradient of environmental conditions throughout Europe for European beech (*Fagus sylvatica* L.) and Scots pine (*Pinus sylvestris* L.), two species with contrasted ecological traits. We hypothesized that across large geographical scales, the difference of climate-growth relationships between pure and mixed stands would be dependent on regional climate. We used tree ring chronologies derived from 1143 beech and 1164 pine trees sampled in 30 study sites, each composed of one mixed stand of beech and pine and of the two corresponding pure stands located in similar site conditions. For each site and stand, we used Bootstrapped Correlation Coefficients (BCCs) on standardized chronologies and growth reduction during drought years on raw chronologies to analyze the difference in climate-tree growth relationships and resistance to drought between pure and mixed stands.

We found consistent large-scale spatial patterns of climate-growth relationships. Those patterns were similar for both species. With the exception of the driest climates where pure and mixed beech stands tended to display differences in growth correlation with the main climatic drivers, the mixing effects on the BCCs were highly variable, resulting in the lack of a coherent response to mixing. No consistent species-mixing effect on drought resistance was found within and across climate zones. On average, mixing had no significant effect on drought resistance for neither species, yet it increased pine resistance in sites with higher climatic water balance in autumn. Also, beech and pine most often differed in the timing of their drought response within similar sites, irrespective of the regional climate, which might increase the temporal stability of growth in mixed compared to pure stands.

Our results showed that the impact of species mixing on tree response to climate did not strongly differ between groups of sites with distinct climate characteristics and climate-growth relationships, indicating the interacting influences of species identity, stand characteristics, drought events characteristics as well as local site conditions.

Keywords

Dendrochronology – Ecological gradient – Species mixture – *Fagus sylvatica* – *Pinus sylvestris*

Funding

The main author obtained a PhD grant from the ‘Fonds National de la Recherche Scientifique’ (FNRS-FRIA) and additional funding support from the Walloon forest service (Service Public de Wallonie— Département de la Nature et des Forêts) through the 5-year research programme “Accord-cadre de recherches et de vulgarisation forestières”. Bratislav Matovic was supported by the Ministry of Education, Science and Technological Advancement of the Republic of Serbia (877 451-03-68/2020-14/ 200197). M.G. Pereira was supported by the National Funds from FCT - Portuguese Foundation for Science and Technology, under the project UIDB/04033/2020. All other contributors thank their national funding agencies.

1. Introduction

The effects of global change on forest functioning are a major concern for both forest scientists and forest managers. With respect to climate, changes in local average precipitation and temperature as well as in the frequency and intensity of extreme events such as drought, are expected to impact the provision of many forest ecosystem services, including wood production (Albrich et al. 2018), in terms of both average performance and temporal stability (Boisvenue and Running, 2006; Allen et al., 2010). Indeed, numerous studies reported that the increased frequency and intensity of drought events significantly reduced growth and increased mortality risks (Allen et al., 2010; Lévesque et al., 2014; Meir et al., 2015). As a result, great research effort is devoted into finding ways to adapt forests and forest management to cope with those adverse effects of climate change (Seynave et al. 2018; Bowditch et al., 2020). In addition to selecting tree species or provenances adapted to expected future climate conditions (Bolte et al., 2009; Frischbier et al., 2019; Bert et al., 2020), increasing stand species diversity has also been proposed to cope with detrimental effects of global change on forests (Ammer 2019, Vilà-Cabrera et al., 2018). Several studies reported a significant influence of species-mixing on climate-growth relationship, including higher resistance to extreme events such as drought; yet those effects were found to be affected by environmental conditions or identity of the species involved (Lebourgeois et al., 2013; Pretzsch et al., 2013; Gazol and Camarero, 2016; Thurm et al., 2016; Bosela et al., 2018, Pretzsch et al. 2020; Steckel et al., 2020).

Specifically, the outcome of species interactions (balance between inter-specific competition and complementarity) depends on climate (Ammer 2019; Forrester 2014), leading to species-mixing effects (differences between pure and mixed stands) on tree-growth relationships to vary depending on environmental conditions (Grossiord et al. 2014; Lebourgeois et al. 2014). Climate is shaping species-mixing effects through different ways. First, individual trees of a given species might be less vulnerable to a similar drought event when growing under dry compared to humid climatic conditions due to long-term adaptation mechanisms (Martín-Benito et al. 2010; Martínez-Vilalta, 2012; Trouvé et al., 2017; Stojnić et al. 2018). Intra-specific traits variations associated with adaptation to dry environments include differences in rooting depth, root to shoot ratio, leaf/sapwood area ratio, wood anatomy (thickness of xylem walls, tracheid diameters...) or changes in leaf morphological features such as leaf area (Linton et al. 1998; Lloret et

al., 1999; Grill et al. 2004; Martinez-Vilalta et al. 2009; Pritzkow et al., 2020). Under similar drought intensities, the constraint experienced by the trees would thus differ depending on climate. On the other hand, it is also possible that the constraint resulting from a drought event in inherently water limited sites cannot be alleviated by species-mixing as suggested by de Streele et al. (2019). Climate characteristics could also affect the balance of species interactions by allowing -or not- compensatory growth (Lassoie and Salo, 1981; Lévesque et al., 2014; Seidel et al., 2019) to happen when species with distinct vegetation periods are admixed. For instance, favorable climatic conditions at the end of the growing season could allow for one species to benefit from reduced competition caused by the earlier reduction of physiological activity of another species with shorter vegetation period. As a result, the outcome of species interactions for each species will vary between climatic areas, all other things being equal. Also, average climatic characteristics could influence species-mixing effect on drought reaction by changing the relative competitiveness between species. For instance the high sensitivity of beech to late frosts (Pretzsch et al., 2015; D'andrea et al., 2020) could reduce its otherwise high dominance over less competitive tree species in late frosts prone climates. Lastly, spatial and temporal variations of environmental conditions influence species-mixing effect through their impacts on both resources and modulators. According to Forrester and Bauhus (2016), the mixing effect is predicted to increase along temporal or spatial gradients of increasing environmental limitation as far as species interactions reduce the constraint.

On the other hand, the drivers of tree growth are expected to change across large geographical areas as a function of regional climate characteristics. In this respect, Babst et al. (2013) highlighted that tree growth response to climate across Europe showed consistent biogeographic patterns in relation with distinct climatic constraints, from zones where tree growth was mainly driven by precipitations to others where temperature was the main driver.

Species-mixing effects on climate-growth relationships are therefore likely to differ between such regions. Indeed, Grossiord et al. (2014) have shown that higher species diversity improved resistance to drought events in certain forest types (temperate beech and thermophilous deciduous forests) while no significant effects were found in hemi-boreal, mountainous beech and Mediterranean forests. In addition to those large-scale patterns, local site

conditions can also shape the mixing effect, resulting in the lack of any significant relationship between species diversity and drought resistance in selected regions (Grossiord et al. 2014b, Ratcliffe et al. 2017).

Species interactions are numerous and complex. Complementarity is considered as a major determinant of species-mixing effects (Ammer, 2019), and encompasses several types of interspecific interactions leading to competitive reduction and facilitation (Vandermeer, 1989). Facilitation refers to mechanisms through which one species improves the resource supply as well as biotic or abiotic conditions for another species (Forrester and Bausch, 2016). Competitive reduction is the process by which inter-species traits variation leads to lower inter-specific competition compared to intra-specific competition (Scherer-Lorenzen et al., 2005), and result from either spatial (e.g. difference in rooting depth) or temporal (e.g. difference in growing period) niche complementarity. Because those mechanisms rely largely on inter-specific differences between associated tree species as well as on intra-specific differences resulting from interspecific interactions, trait diversity and trait plasticity are critical determinants for the outcome of mixing (Jactel and Brockerhoff, 2007; Dawud et al., 2017). Numerous traits can influence tree growth response to climate, and thus determine the species-mixing effect. For instance, by their longer vegetation period, coniferous species could have more opportunity for compensatory growth (Seidel et al., 2019) during climatically favorable periods following a drought event than broadleaves (D'Andrea et al. 2020). If conifer compensatory growth happens after the end of the admixed broadleaves vegetation period, conifer could additionally benefit from lower interspecific competition in mixed stands compared to pure stands. Traits associated with tree hydraulic and physiological characteristics are also major determinant of tree growth reaction to climatic variations. Association of species displaying variations in those traits could lead to improved drought response in mixture compared to monocultures (Schwendenmann et al. 2015, Grossiord 2020).

Species-mixing effects depend not only on the combination of traits of the species in presence but also on their interaction with environmental conditions. The environmental conditions can indeed influence the expression of the traits for the species in presence. As an example, constraints such as temporary soil waterlogging (Kozłowski, 1986) or limited depth to bedrock (Balneaves and De La Mare, 1989) could prevent any belowground niche partitioning

through their negative effect on root development, resulting in a lack of mixing effect on drought response even for species with otherwise potentially different rooting patterns.

As a result, we might expect contrasting impacts of mixing on the response to both climate-growth relationships and reaction to drought events, depending on climate as well as on local site characteristics such as microclimate or soil characteristics (maximal water availability, ...).

In this study, we investigate how growth response (measured by tree-ring width of dominant trees) to climate and drought differs between pure and mixed stands along an unprecedented gradient of environmental conditions across Europe, for European beech and Scots pine. Those two species are of high relevance in this context as they display strong differences in a series of traits potentially involved in growth response to climate variation. More specifically, they differ in the distribution of root biomass within the soil profile (heart-shape rooting pattern for beech vs. peak in most superficial soil layers for pine, higher competitiveness of beech root system - Curt and Prévosto, 2003; Prévosto and Curt, 2004), in the length of the vegetation period (longer growing season of pine compared to beech) and in their hydraulic strategies (isohydric for pine vs. anisohydric for beech – Cochard, 1992; Martínez-Vilalta et al., 2004; Schäfer et al., 2017; Pflug et al., 2018). Because the ecological traits of the two species are so contrasted, complementarity effects are expected to occur. Using the same dataset from the EuMIXFOR COST action (Heym et al., 2017) as the one used in the present study, Pretzsch et al. (2015) and del Río et al. (2017) showed that both productivity and temporal stability of productivity, respectively, were on average higher in mixed pine/beech stands than expected from pure stands. They also found a high between-site variability of species-mixing effect on productivity and temporal stability. Although the authors proposed several hypotheses potentially explaining those positive species-mixing effects on productivity, they did not perform any quantitative analyses of the mechanisms at play. As a result, several studies were conducted to highlight the candidate dominant mechanisms. The considered mechanisms include light related processes (Barbeito et al. 2017; Forrester et al. 2018), water-related processes (de Streel et al. 2019) or nutrient-related processes (de Streel et al. 2021). In this paper, we extend the range of mechanisms by considering the climate-related processes. Because species-mixing effect have been found on long-term stand performances (difference in productivity between pure and mixed stands) as well as on reaction to

extreme events (stability of productivity, resilience, resistance or recovery to drought...), we explored species-mixing effects on climate-related processes using indicators of both long-term behavior and reaction to drought.

For both species, we hypothesized that the difference in climate-growth relationships including both long-term growth response to climate and short-term reaction to drought event will vary between pure and mixed stands depending on climatic characteristics, resulting in consistent regional patterns across Europe. To test this hypothesis, we conducted dendroecological analyses. First, we analyzed the climate-tree growth relationships of both species in pure and mixed stands, using Bootstrapped Correlation Coefficients. We then tested the difference in resistance to drought event between pure and mixed stands, and investigated its relationship with regional climate.

1. Materials and methods

1.1. Study area and site/stand characteristics

The tree data used in this study came from 30 sites established under the COST Action FP1206 EuMIXFOR (European Network on Mixed Forests). Each site consisted of three stands with similar ecological conditions but varied composition: pure stands of pine and beech and a mixed stand of both species. This triplet-transect approach (Pretzsch et al., 2015) allowed to cover a large environmental gradient within the overlapping natural ranges of pine and beech, while ensuring homogeneity of site conditions for all three stands related to one triplet; this way, bias due to co-variation between site conditions and stand composition was avoided. Effects of species identity and species mixing could therefore be analysed without influence of confounding factors. Elevation varied between 20 and 1475 m a.s.l.; mean annual precipitation sum (P) ranged from 520 to 1175 mm and mean annual temperature (T) from 6 to 10.5 °C. In the mixtures, the percentage of basal area represented by Scots pine ranged from 25 % to 74 %; total basal area ranged from 16 to 80 m² ha⁻¹ and stand age from 40 to 130 years. The stands were mostly even-aged and mono-layered. No silvicultural activities had been conducted in the stands during the preceding decades. A standard protocol for tree data collection (diameters, heights of trees and crown bases) and tree coring was applied. The full measurement protocol was described in details by Heym et al. (2017). Selected site and stand characteristics for each site are presented in Table A1.

1.2. Climate data

We used the 0.25°-gridded E-OBS dataset from the EU-FP6 ENSEMBLES project. From this dataset, we obtained series of daily minimum and maximum temperatures and cumulative daily precipitation for the 1979-2013 period (i.e. the length of the dendrochronological series). Climate variables were used to analyze the influence of climate on tree growth. Mean monthly temperature and monthly Standardized Precipitations Evapotranspiration Index (SPEI) were used. SPEI is a (monthly) multi-scalar index that can be used to determine the onset, duration and magnitude of drought conditions with respect to normal conditions (Vicente-Serrano et al., 2010). Positive values indicate above-normal wet conditions, whereas negative values identify dry periods. SPEI values between -0.67 and 0.67 are considered normal, values between -0.67 and -1.28 indicate moderate drought, and values <-1.28 indicate severe drought (Isbell et al., 2015). The potential evapotranspiration (PET) necessary to calculate SPEI was determined using the modified Hargreaves equation (Choisnel et al., 1992; Droogers and Allen, 2002), which provides estimations that are close to those obtained from the Penman-Monteith equation (Beguería et al., 2014). Calculations were made using the SPEI-package in R software (Beguería et al., 2014; R Core Team, 2019).

Climatic parameters were considered from June of the previous year to October of the current year. Climate variables were standardized to remove long-term variability using a smoothing spline with 50% frequency cut-off at a wavelength of two-third of the length of each series (Cook and Peters, 1981). Standardized climate variables were calculated by taking the difference between climatic values and the spline (Bert et al., 2020).

1.3. Dendrochronological methods

Sampled trees and master chronologies

At each site and stand, a minimum of 10 dominant or co-dominant trees per species (i.e. beech or pine in the pure stands, beech and pine in the mixed stand) were cored at breast height in 2013 or 2014 (two cores per tree; northern and eastern directions; last complete tree-ring in 2013). Individual tree-ring series were crossdated and series with unresolvable crossdating problems were dropped (Heym et al., 2017). For each tree, measurements from the two

cores were averaged to obtain one individual series. In a limited number of cases (15% of total number of trees), however, only one core per tree could be used for the analyses. In total, 1143 beech trees (592 from pure stands; 551 from mixed stands) and 1164 pine trees (597 from pure stands; 567 from mixed stands) were used for dendrochronological analyses. To remove long- and medium-term growth trends and to focus on high-frequency growth variation, individual tree-ring series were detrended using a smoothing spline with 50% frequency cut-off at a wavelength of two-third of the length of each series (Cook and Peters, 1981). Master chronologies were calculated using biweighted robust mean (Cook and Kairiukstis, 2013) on the maximum period common to all sites (1979-2013). A master chronology was established for each stratum (Fig. 1, upper panel. A stratum is defined by a combination of site (30 in total) x species (pine or beech) x stand composition (pure or mixed – in mixed stands, a master chronology was established for each species independently); total number of strata = 120). Detrending was conducted using the DENDRO script (Mérián, 2012) within the R software (R Core Team, 2019). Expressed Population Signal (EPS) was calculated to assess the suitability of the dataset for dendroecological analyses. The high EPS values indicated that the chronologies can be used for the analyses (mean and standard deviation = 0.90 ± 0.07 and 0.90 ± 0.05 for pure and mixed beech respectively; 0.92 ± 0.07 and 0.90 ± 0.05 for pure and mixed pine respectively).

Identification of drought events

To analyze tree growth response to drought events, we selected site specific drought events that had a negative effect on tree growth. First, we identified negative pointer years for each species using the “Relative Event Year” definition of Schweingruber et al. (1990), i.e. at least 75% of the trees displayed a reduction of raw growth superior to 15% compared to the average raw growth of the previous 4-year period (Relative Growth Change (RGC) method – Becker, 1989; Schweingruber et al., 1990; Jetschke et al., 2019). Due to this 4-year window, dry years were selected within the period 1983-2013. In order to ensure that growth limitation was related to a drought event, we then only kept the negative pointer years associated with monthly SPEI values lower than -1.28 (Isbell et al., 2015) for at least one month during the growing period (March – August) of either the current year or the previous year. Taking into account the previous-year drought allowed to account for possible carry-over effects. As a result of the selection

process, several drought years could be selected for each combination of site and species, and years could vary between species within a site (see Table A2).

1.4. Statistical analyses

Climate-growth relationship

Bootstrapped Correlation Coefficients (BCC; Blasing et al., 1984; Guiot, 1991) were used to analyze the climate-growth relationship (Fig. 1, lower panel – left-hand side). Master chronologies per strata were used as dependent variable. Correlation functions were calculated using 34 climate regressors: 17 T_{mean} and 17 monthly SPEI values from June of the previous growing season to October of the current growing year. Climatic regressors were written in the form: Variable_{Month}; months written in full caps indicate variables from the current year while months written in lower case letters indicate climatic variables from the previous year. Sample size-related bias between strata was corrected by dividing BCC values by the square root of the Expressed Population Signal (EPS) as proposed by Mérian et al. (2013).

We first used Principal Component Analysis (PCA) on BCCs followed by hierarchical ascending clustering according to Ward D2 method to identify the different patterns in climate-growth relationships over the strata (Richman, 1986; Lebourgeois et al., 2014). Using this approach, we were able to properly account for the potentially different climate drivers affecting tree growth across such a large geographical area, and to identify groups of sites displaying similar climate-growth relationships. The optimal number of groups defined by the clustering algorithm was based on the elbow method and the Calinski-Harabasz index. Clustering allowed us to identify groups of sites displaying similar climate-growth relationships. Clustering dendrograms are presented in Figs. A1.1 to A1.4. Stand and climatic characteristics for the groups of sites resulting from the clustering are presented in Table 1 and Figure 3. Additional variables (such as mixing percentage, basal area or stand age) were also considered in the multivariate analyses but were not correlated to any PC.

Thereafter, to better highlight the difference of climate-tree growth relationship between pure and mixed stands for each species independently, we calculated the distance between the pure and the mixed stands of a given site along the principal components, using the following equation:

$$D_{ij} = |P_{ij}| - |M_{ij}|$$

Where D_{ij} corresponds to the displacement from the projection of each species in pure stand to the projection of each species in mixed stand for site i along PC j . P_{ij} is the association of the pure stand from site i with principal component j ; similarly, M_{ij} is the association of the mixed stand from site i with principal component j . As a result, inward displacement (i.e. displacement in the direction of the origin of the principal component) is positive while negative values are associated with outward displacement. Inward displacement can, for instance, indicate a decrease in correlation with all variables associated with the corresponding PC. To characterize the patterns of change in climate-growth relationships between pure and mixed stands in different regions, we used the shift between pure and mixed stands positions on the compositional planes as indicator of the intensity of change in sensitivity to environment (Thimonier et al. 1994; Mérian and Lebourgeois, 2011). One-sample t-tests were then used to assess whether the average displacements within groups along a PC were significantly different from zero. In some cases, the low number of sites within a specific group prevented us to properly assess the displacement direction (inward or outward displacement) and amplitude (importance of the displacement between pure and mixed stand of a site along one PC).

Response to extreme drought

In addition to looking at the difference of correlation between growth and climate variables in pure and mixed stands, we aimed at testing the difference in trees response to punctual drought events between the two stand types (Fig. 1, lower panel – right-hand side). To assess how the growth response to punctual drought events differed between pure and mixed chronologies, we calculated the relative growth change per stand type \times site \times drought event for each species separately, using the corresponding species-related drought years. In a first analysis, a PCA was performed on RGC values to explore to which extent growth response to drought differed between stand types

and sites. The displacements of projection from pure to mixed stands were also calculated, and average displacements within groups were tested as described above. In a second step, we used mixed effect models for each species separately, considering year nested within site as random factor, to test for the significance of stand composition (pure vs mixed), average site climatic parameters (average temperature and difference between precipitation and potential evapotranspiration for the following periods: Mar-May, Jun-Aug, Sep-Nov, Dec-Feb in each site), site geographic characteristics (altitude and latitude) and stand characteristics (age and basal area) on growth reduction (RGC) during drought events, according to the original equation:

$$RGC_{sy} = \beta \times E_s + a_s(0, \sigma_s^2) + a_{y|s}(0, \sigma_y^2) + \varepsilon(0, \sigma_\varepsilon^2)$$

Where RGC_{sy} represents the stand average relative growth change for site s , and year y , β is the vector of fixed effect parameters, E is the matrix of the predictors of the fixed effects, a_s is the random factor characterized by the inter-site variance σ_s^2 , $a_{y|s}$ is the random factor characterized by the interannual variance within a site σ_y^2 and ε is the error term of variance σ_ε^2 . A series of climatic variables ($Tmean_{spring}$, $Tmean_{summer}$, $Tmean_{fall}$, $Tmean_{winter}$, $SPEI_{spring}$, $SPEI_{summer}$, $SPEI_{fall}$, $SPEI_{winter}$), a dummy variable with two levels (pure/mixed) representing stand composition, other potential confounding factors (stand basal area and stand age) and their interactions were used as candidate variables for fixed effects. Starting from the model with the full set of parameters, the variables with the lower predictive power were then progressively removed based on the Akaike Information Criterion (AIC).

All calculations were made using the R software (R Core Team, 2019).

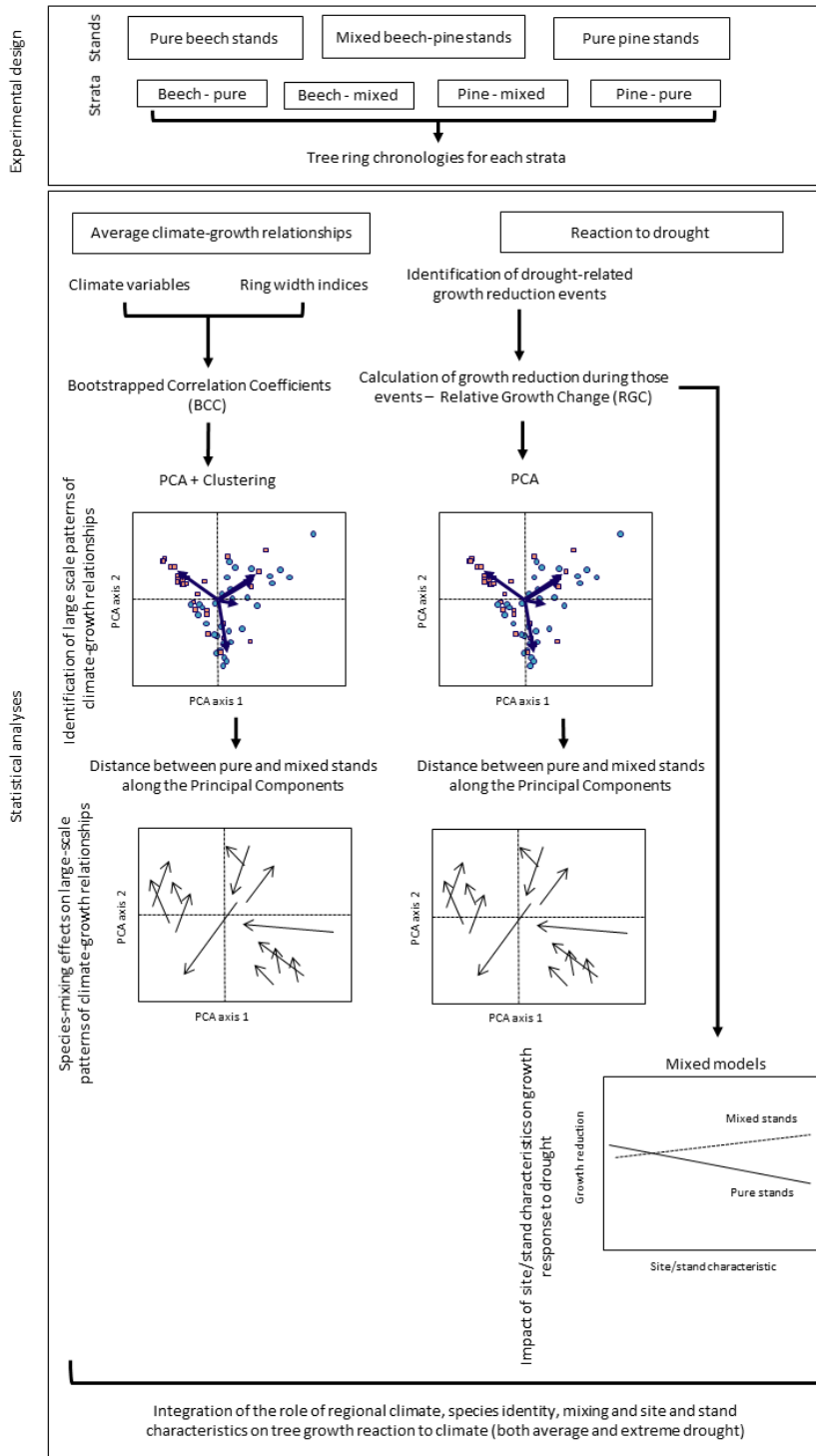


Figure 1 Flowchart showing the experimental design (upper panel) and the different steps involved in the analysis (lower panel) of the average climate-growth relationships (left-hand side) and of the response to drought (right-hand side).

Table 1 Range (minimum/maximum) of selected site and stand characteristics for groups of sites showing comparable climate-growth relationships. The groups are based on a clustering analysis performed on the first (clusters 1.1 to 1.6) and second (clusters 2.1 to 2.3) compositional planes of a PCA performed on Bootstrapped Correlation Coefficients. Because clustering analysis performed on the second compositional planes yielded slightly different groups between the two species, characteristics are given separately for beech and pine for clusters 2.1, 2.2 and 2.3. Spring: Mar-May, Summer: Jun-Aug, Fall: Sep-Nov, Winter: Dec-Feb. T, mean air temperature (°C); WB, climatic water balance (mm): precipitation minus potential evapotranspiration; Stand type, with BE for beech, PI for pine; BA, basal area (m² ha⁻¹). Climate data are averages over 1979-2013. Age in mixed stands is indicated as follows: beech age range (min/max); pine age range.

Cluster	Latitude	Altitude	T _{mean_spring}	T _{mean_summer}	T _{mean_fall}	T _{mean_winter}	WB _{spring}	WB _{summer}	WB _{fall}	WB _{winter}	Stand type	BA range	Age range	
	range	range									Composition			
	[°]	[m]	[°C]	[°C]	[°C]	[°C]	[mm]	[mm]	[mm]	[mm]		[m ² .ha ⁻¹]	[years]	
1.1	48.2/56.2	27/547	6.2/10.1	15.5/18.1	7.3/11.2	-1.4/3.7	-106.5/40.9	-192.1/-10.4	1.3/165.2	58.4/244.2	Pure	BE	23/54	46/150
												PI	11/59	45/150
											Mixed	BE/PI	30/52	45/115; 45/130
1.2	48.6/55.5	20/533	6.6/9.0	16.7/17.9	7.5/9.3	-2.6/0.6	-119.6/-54.4	-221.9/-38.9	0.4/185.7	53.3/159.3	Pure	BE	21/45	45/102
												PI	24/45	45/102
											Mixed	BE/PI	16/63	45/102; 45/102
1.3	50.0/51.0	209/383	7.6/8.6	17.1/17.9	7.8/8.7	-2.3/-1.3	-91.7/-80.5	-151.8/-136.3	11.1/23.6	59.7/82.3	Pure	BE	18/53	55/105
												PI	30/64	55/105
											Mixed	BE/PI	33/47	55/105; 55/105
1.4	44.9/46.1	1038/1475	4.7/5.2	14.2/14.7	6.9/6.9	-2.6/-1.2	-10.0/166.9	-109.9/-103.8	101.1/232.7	35.2/240.6	Pure	BE	23/41	40/55
												PI	47/52	40/55
											Mixed	BE/PI	22/41	40/55; 40/55
1.5	42.1/42.2	1099/1292	6.7/10.2	16.5/19.6	9.3/12.8	1.7/5.1	-54.4/-30.8	-387.8/-318.1	15.56/56.7	94.7/136.3	Pure	BE	33/52	40/50
												PI	40/55	40/50
											Mixed	BE/PI	32/53	40/50; 40/50
1.6	41.9/43.6	1080/1188	5.7/8.4	16.0/17.8	7.3/9.4	-2.6/-0.7	-53.4/-7.7	-275.5/-168.0	-51.6/90.4	80.0/157.0	Pure	BE	20/41	65/75
												PI	33/54	65/75

											Mixed	BE/PI	27/80	65/75; 65/70
2.1 – Beech	48.2/52.1	40/547	7.5/9.8	15.9/18.1	7.3/10.0	-1.4/2.0	-119.6/40.9	-221.9/-10.4	0.4/147.9	53.3/244.2	Pure	BE	21/54	45/150
											Mixed	BE/PI	16/52	45/100; 45/130
2.1 - Pine	48.2/50.1	40/540	7.5/9.8	16.4/18.1	7.3/10.0	-1.4/2.0	-106.5/2.4	-192.1/-10.4	0.4/100.8	53.3/177.5	Pure	PI	25/59	45/73
											Mixed	BE/PI	32/52	45/70; 45/70
2.2 – Beech	46.1/56.2	27/1038	5.2/10.1	14.7/17.6	6.9/11.1	-2.6/3.7	-96.9/-10.0	-163.6/-93.2	30.5/165.2	35.2/205.6	Pure	BE	23/52	40/115
											Mixed	BE/PI	16/46	40/115; 40/115
2.2 - Pine	40.0/56.2	27/547	6.2/10.1	15.1/17.6	7.7/11.1	-0.7/3.7	-119.6/40.9	-221.9/-56.5	7.1/165.2	90.8/244.2	Pure	PI	11/48	48/150
											Mixed	BE/PI	16/46	46/115; 46/130
2.3 - Beech	41.9/55.5	20/1475	4.7/10.2	14.2/19.6	6.9/12.8	-2.6/5.1	-91.7/166.9	-387.8/-38.9	-51.6/232.7	59.7/240.6	Pure	BE	18/53	40/105
											Mixed	BE/PI	22/80	40/105; 40/105
2.3 - Pine	41.9/55.5	20/1475	4.7/10.2	14.2/19.6	6.9/12.8	-2.6/5.1	-91.7/166.9	-387.8/-38.9	-51.6/232.7	35.2/240.6	Pure	PI	30/64	40/105
											Mixed	BE/PI	22/80	40/105; 40/105

2. Results

2.1. Major climatic drivers of radial growth

The first principal component accounted for 24% of the total variance for both species (Fig. 4, A and C). Both species presented similar patterns of climate-growth relationships with a major role of summer and fall temperatures. For beech, PC1 revealed an opposition between the influence of current average temperature in September ($T_{\text{mean}_{\text{SEP}}}$) and the influence of average temperature of previous September and July ($T_{\text{mean}_{\text{SEP}}}/T_{\text{mean}_{\text{JUL}}}$) on growth while for pine $T_{\text{mean}_{\text{SEP}}}/T_{\text{mean}_{\text{JUL}}}$ vs. $T_{\text{mean}_{\text{SEP}}}/\text{SPEI}_{\text{Jun}}$ were determinant. The second principal component accounted for 17% of the total variance. As for PC1, both species showed a rather similar response yet with a more important role of summer drought: PC2 was positively associated with SPEI_{AUG} (for beech) and SPEI_{Aug} (for pine) and negatively associated with $T_{\text{mean}_{\text{JUL}}}$ (beech) and $T_{\text{mean}_{\text{AUG}}}$ (beech and pine). PC3, which held 11% of total variance for both species, was determined by SPEI_{APR} and SPEI_{Sep} . Lastly, PC4 (10% of total variance) was negatively correlated with June temperatures and April temperature of the current year.

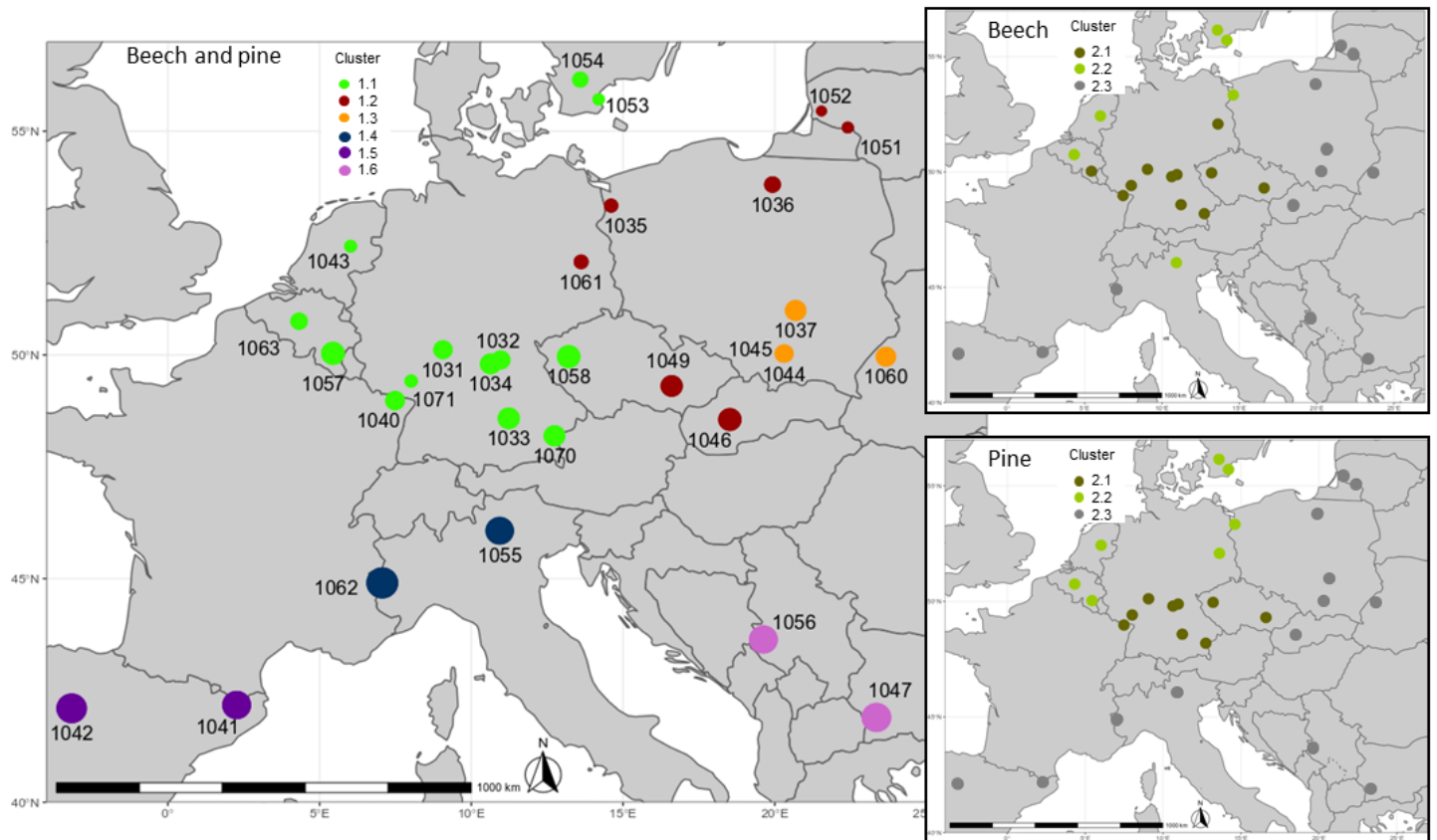


Figure 2 Distribution of the 30 study sites across Europe. Numbers are the site-ID (Table A1). The size of the points is proportional to the site altitude (20 - 1475 m). The colors refer to clusters of sites showing similar climate-growth relationships. These clusters are based on a clustering analysis performed on the first (main map common for the two species, clusters 1.1 to 1.6) and second (smaller maps, clusters 2.1 to 2.3; beech: above, pine: below) compositional planes of a PCA performed on Bootstrapped Correlation Coefficients.

2.2. Geographic pattern of major climatic drivers of radial growth

Clustering made on PC1/2 (clusters 1.1. to 1.6.) and PC3/4 (clusters 2.1. to 2.3.) (Fig. A1.1. to A1.4.) revealed several groups of sites displaying similar climate-growth relationships (Fig. 4), and those patterns were similar for both species.

On the first compositional plane, the Spanish sites (1041, 1042; cluster 1.5) displayed distinct climate sensitivity, due to a strong positive correlation with $T_{\text{mean}_{\text{SEP}}}$ (and SPEI_{Jun} for pine) or a negative correlation with $T_{\text{mean}_{\text{SEP}}}$ or $T_{\text{mean}_{\text{Jul}}}$. The sites from the southeastern part of the network (1056 and 1047; cluster 1.6) were also strongly associated with PC1 but through a negative correlation. Cluster 1.4 was composed of the two Italian sites (1062 and 1055) and was positively associated with PC1 and, to a lower extent, with PC2. Cluster 1.3 was equally associated with PC1 and PC2 as was cluster 1.2, although the correlation with climatic variables was much lower for the latter. Lastly, sites from cluster 1.1 displayed low correlation with either of the first two PCs.

On the second compositional plane, clustering defined three groups. Two of them displayed strong and coherent correlation with PC3 and PC4: clusters 2.1 and 2.2, respectively. The majority of sites associated with clusters 2.1 and 2.2 on the second compositional plane belonged to cluster 1.1 on the first plane. Cluster 2.1 corresponded to sites from Central Europe (South of Germany, Czech Republic, Slovakia), while cluster 2.2 brought together sites from the Northwestern part of Europe (Figs. 2 and 4).

Clusters differed both in geographic (altitude, latitude) and climatic characteristics (Table 1 and Fig. 3). Indeed, clusters 1.4, 1.5 and 1.6 were all low latitude/high altitude groups of sites (Fig. 2). Cluster 1.5 (and, to a lesser extent 1.6) was characterized by very dry summer, while cluster 1.4 showed cold and humid conditions throughout the year (Fig. 3). Clusters 1.1, 1.2 and 1.3 were all mid-range latitude and low altitude groups. Cluster 1.3 displayed low P - PET values during the non-growing period (fall, winter); there was a pattern of decreasing P - PET level during winter when moving from cluster 1.1 to cluster 1.3. In the following, we therefore referred to the climate conditions associated with each cluster as regional climates.

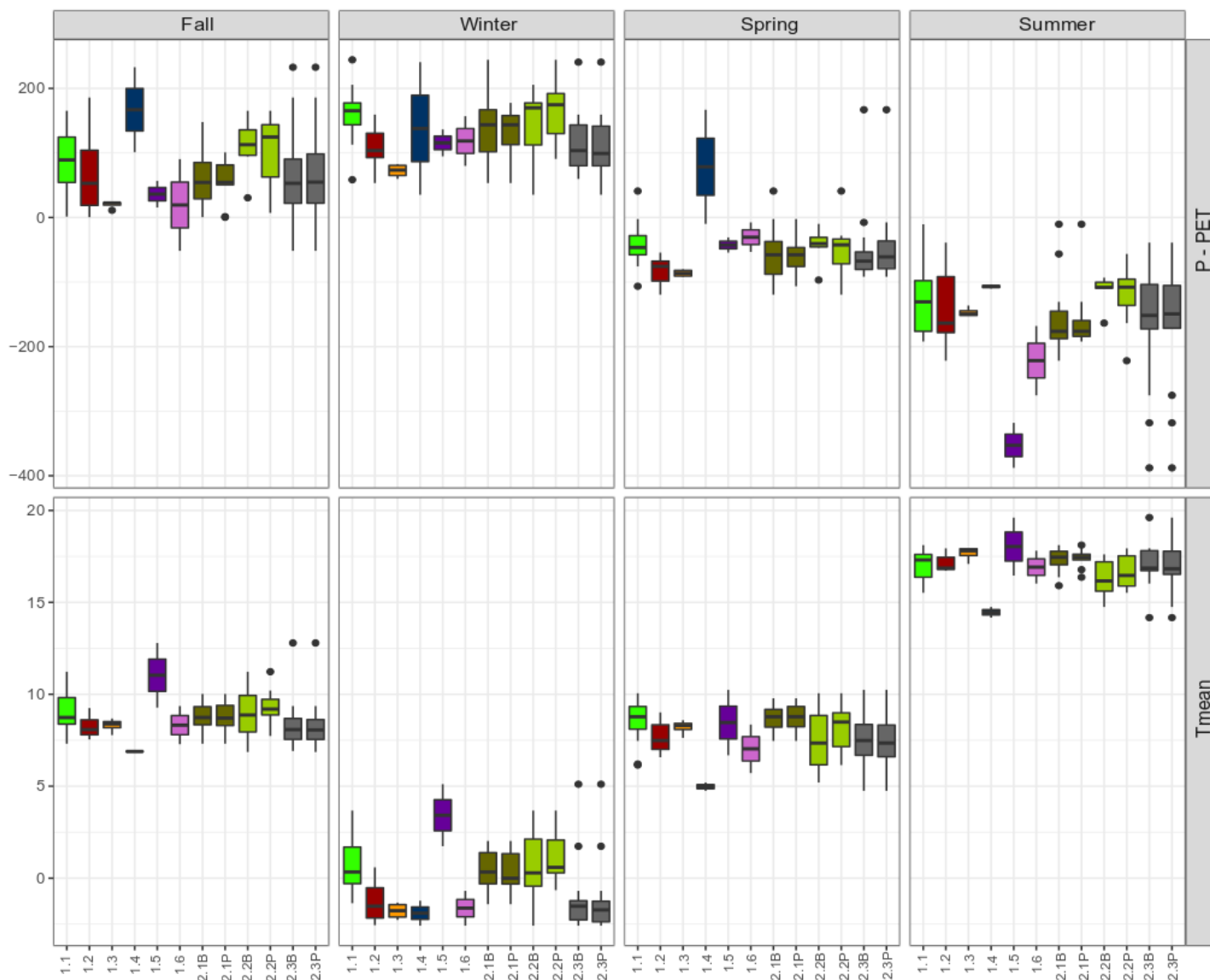


Figure 3 Climate characteristics (P-PET, an indicator of climatic water balance [mm] and Tmean [°C]) of the clusters of sites defined according to their similar climate-tree growth relationship. Lower and upper limit of the boxes represent 25 and 75% quantiles, respectively while the whiskers indicate the lowest or highest value not further than 1.5 x the inter-quartile range from the hinges. Clusters resulting from clustering performed on the second compositional plane (clusters 2.1, 2.2 and 2.3) noted “B” and “P” refer to beech and pine, respectively.

2.3. Species-mixing effect on climate-growth relationship

The amplitude and direction of change (“displacement along the PCs”) of loadings values from pure to mixed chronologies on each PC were highly dependent on site identity for both species, and no global pattern could be found (Fig. 4). For pine, none of the groups displayed significant displacement in any direction. For beech, sites from clusters 1.5 and 1.6 seemed to display coherent displacement along the first and third PCs (Fig. 4) which could indicate a lowering correlation with variables associated with those PCs. However, the low number of sites in those clusters did not allow us to properly test this potential effect.

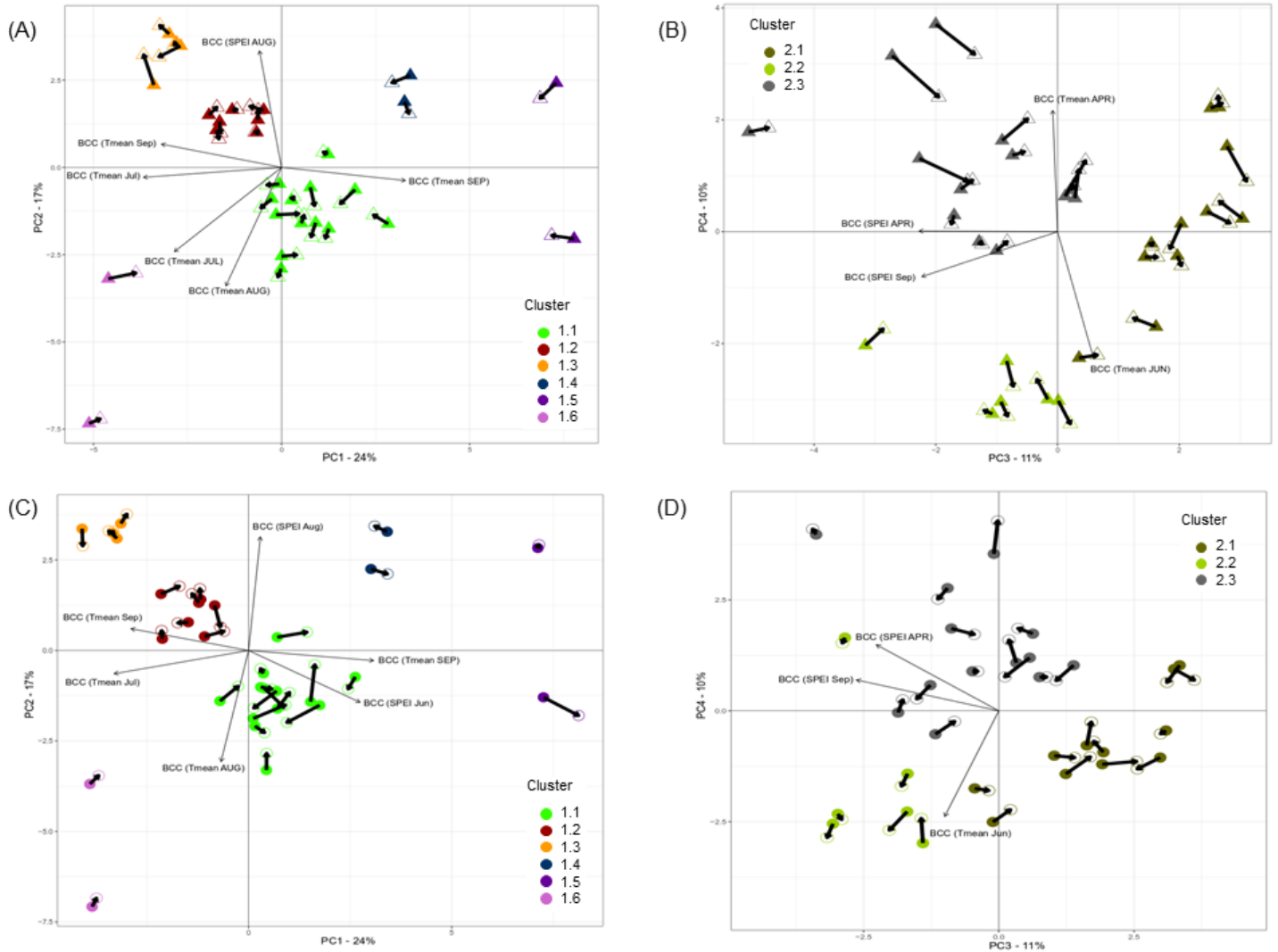


Fig. 4 Principal Component Analysis of the Bootstrapped Correlation Coefficients for beech (A and B) and pine (C and D) between standardized tree-ring width of each strata (site x species x stand) and climatic variables (monthly Tmean and SPEI values from June of the previous year to November of the current year). Strata corresponding to pure and mixed chronologies are depicted by big filled and small open symbols, respectively. Only the best represented variables are drawn. Arrows indicate the displacement from the pure to the mixed chronologies within each

site. Strata and climatic vectors pointing in the same direction indicates positive correlation, whereas the opposite indicates negative correlation. For climatic variables, months in full caps refer to the current year (previous year otherwise). Colors indicate sites grouped together by the clustering algorithm, based on the first (clusters 1.1 to 1.6) and second (clusters 2.1 to 2.3) compositional planes (Fig. A1). Clusters 2.1 and 2.2 are mostly composed of sites belonging to cluster 1.1.

2.4. Response to extreme drought

The average number of drought years across the period 1983-2013 (Table A2) was similar for beech and pine (mean \pm standard deviation = 2.8 ± 1.3 and 2.7 ± 1.5 for beech and pine respectively). However, the number of drought years strongly differed between specific combinations of site and species, ranging from 0 to 6 for beech and from 0 to 7 for pine. The number of drought years that cleared the “Relative Event Year” criteria was similar between pure and mixed stands of a same species (3.4 ± 1.6 vs. 3.0 ± 2.2 in pure and mixed beech, respectively; 3.5 ± 2.1 vs. 3.6 ± 2.0 in pure and mixed pine, respectively).

In most cases (63% of cases for beech, 60% for pine), strata-level drought years corresponded to “Relative event years” for both pure and mixed stands. When only one of the two plots displayed a relative event year, growth reduction was found equally frequently in pure and mixed stands for beech (56% and 44% of cases, respectively); for pine, pure plots responded more frequently (73% of cases). Beech and pine also tended to react to different years as, out of the total of 93 drought events identified for at least one of the two species at a same site, only 15 were common to both species; out of the 78 remaining events, 50 were associated with pine. Beech displayed high apparent variability in species-mixing effect on growth reduction during drought years. Indeed, out of the 19 sites displaying at least one drought year, 11 sites displayed situations of positive (lower growth reduction in mixed stands) and negative species mixing effects, depending on the year (Table A2); the 8 remaining sites displayed systematically negative (4 sites) or positive (4 sites) species-mixing effects. Species-mixing effect on drought response appeared to be more consistent over the study period for pine as out of the 26 sites displaying at least one drought year, on 18 sites, all drought years were associated with either systematically negative (5 sites) or systematically positive (13 sites) species mixing effects. On the remaining sites, positive and negative species-mixing effects can be

found. For both species, sites displaying such consistent positive or negative species-mixing effects across years were found in all groups of sites showing comparable climate-growth relationships.

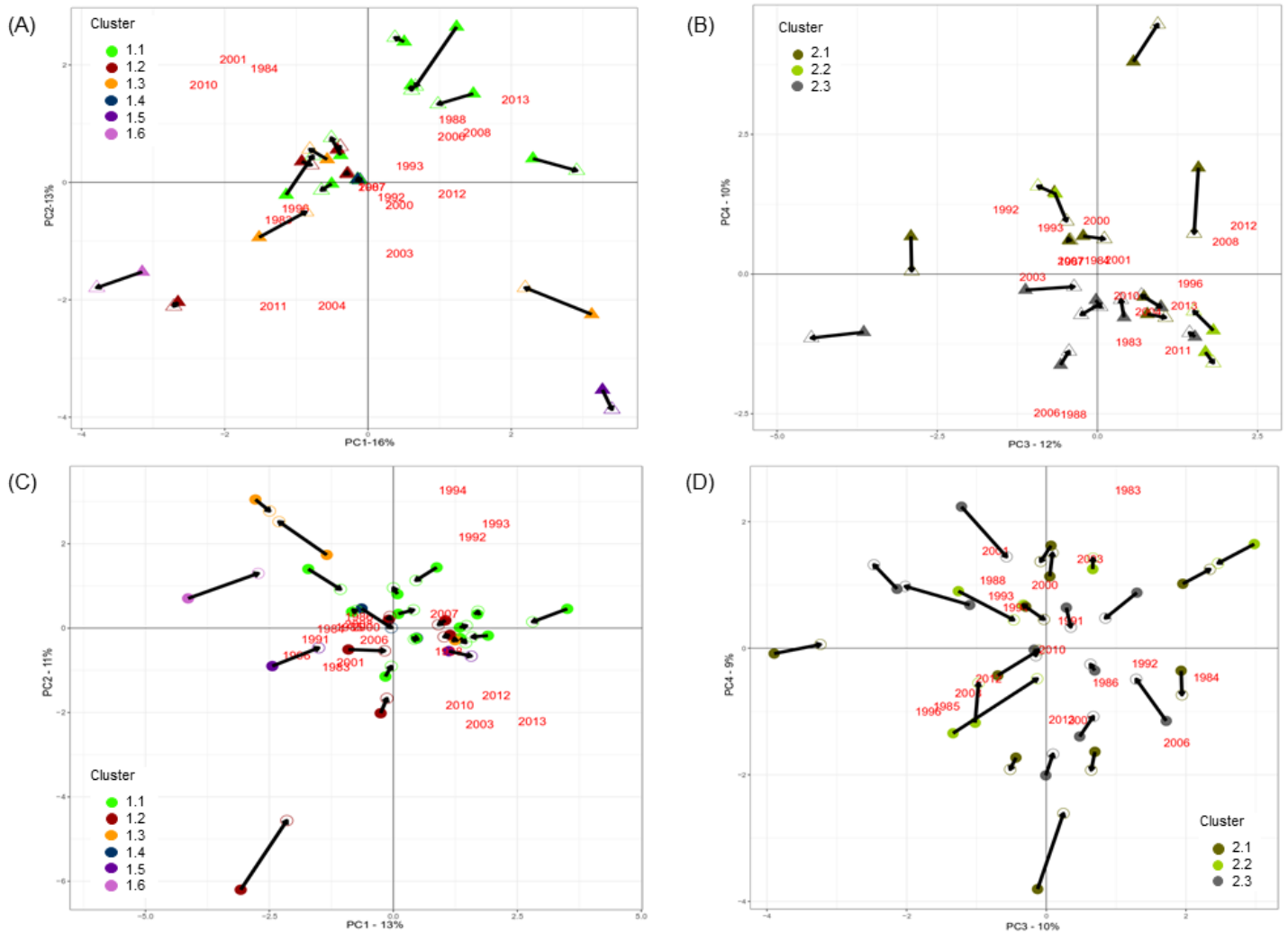


Fig. 5 Principal Component Analysis performed on the Relative Growth Variation during drought years for beech (A and B) and pine (C and D). Pure and mixed chronologies are depicted by filled and open symbols, respectively. Arrows indicate the displacement from the pure to the mixed chronologies within each site. Colors represent the clusters delimited based on the main climate-growth relationship patterns found in the PCA conducted on Bostrapped Correlation Coefficients (see Fig. 4). Red numbers indicate drought years. A total of 11 sites for beech and 4 sites for pine were found to be non responsive to drought (Table A2).

For beech, the first four axes of the PCA conducted on the drought events accounted for 16, 13, 12 and 10% of total variance respectively. For pine, they accounted for 13, 11, 10 and 9% (Fig. 5). Clusters of sites showing similar

climate-growth relationships and certain common climate characteristics did not show any coherent pattern of relative growth variation during drought (Fig. 5). No coherent drought response could be found within the groups of BCC similar sites, indicating those sites had no or only limited drought years in common. In addition, non-responsive sites (11 for beech, 4 for pine; Table A2) were found in all groups.

There was no globally coherent difference in the response to drought between pure and mixed chronologies (Fig. 5). Despite large differences in the position of pure and mixed stands along the PCA planes for some sites, the displacement of chronologies projections from pure to mixed stands did not show any consistent pattern for beech (Fig. 5). For pine, the displacements along the first and fourth PC were significantly positive when all sites were considered together (p -values of 0.03 in both cases); in addition, all sites from cluster 2.2. showed a significantly positive displacement along the third PC (p -value = 0.04).

According to the linear mixed effect model fitted on beech RGC, pure and mixed stands did not display any significant difference in growth reduction during drought years. For pine, there was no main effect of stand composition, but a significant interaction between stand composition and $P - PET$ during fall as illustrated in Fig. 6. The growth reduction was less pronounced in mixed than in pure stands only for sites with high $P - PET_{fall}$.

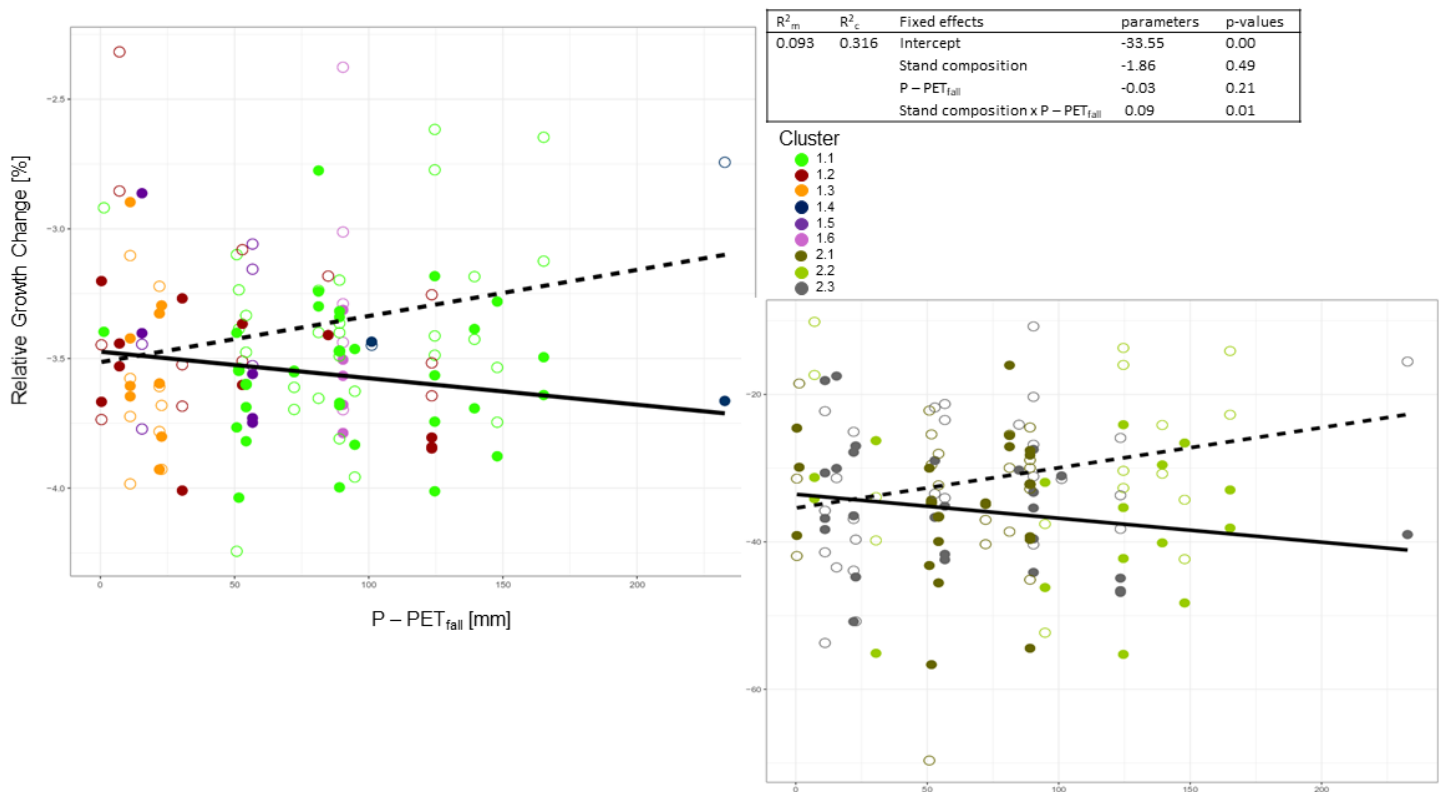


Fig. 6 Predicted (lines) and observed (dots) RGC values for pine as a function of $P - PET_{fall}$ in pure and mixed stands. Parameter estimates, p values and R-squared for the linear mixed models adjusted on pine RGC values are presented in the enclosed table. Marginal R-squared (R^2_m) represents the variance explained by fixed factors; conditional R-squared (R^2_c) represents the variance explained by both fixed and random factors (full model). Reference level for stand composition is “pure”. Open symbols and dashed line represent mixed stands; filled symbols and continuous line represent pure stands. The colors refer to groups of sites showing similar climate-growth relationships; those groups are based on a clustering analysis performed on the first (main figure, clusters 1.1 to 1.6) and second (smaller figure, clusters 2.1 to 2.3) compositional planes of a PCA performed on Bootstrapped Correlation Coefficients.

3. Discussion

3.1. Geographical pattern of climate-growth relationship

The response of tree growth to climate at the European scale is primarily driven by the regional climate conditions, for both tree species (pine/beech) and all stand composition (pure/mixed). Summer/fall temperatures (July/September – Figs. 4 and A2) of current and previous years are the main climatic drivers of tree growth which is consistent with previous studies also led at the European scale (Briffa et al., 2002; Wettstein et al., 2011). Our clusters (Fig. 4) also agree with biogeographical patterns of climate-tree growth highlighted by Babst et al. (2013) over Europe. On the other hand, in contrast to previous studies conducted

at local scales (e.g. González de Andrés et al., 2018), both species showed similar climate-growth relationships suggesting that at European scale, the site geographical and climatic characteristics appeared to be stronger determinants of response to climate than species identity.

3.2. Species-mixing effect on climate-growth relationships

An apparent coherent displacement from pure to mixed stands was observed for beech only under warm (low latitude) and dry (low summer P-PET) conditions, while no such effect was detected for pine whatever the ecological conditions.

The low number of sites corresponding to those specific conditions did not allow us to accurately test the significance of those displacements for beech. However, we can point out that these displacement from pure to mixed stands correspond to strong ecological constraint suggesting a positive interaction between species on stand functioning (complementarity). Under the less restrictive ecological conditions (Fig. 3), the strong heterogeneity in term of displacement according to mixing confirms that there is a need to have some overwhelming common constraint to express the complementary between species in mixed stands. This pattern clearly fits within the general framework proposed by previous authors (Bertness and Callaway, 1994; Forrester and Bauhus, 2016) stating that complementarity increases when environmental conditions become harsher, provided that species-mixing has an impact on the limiting factor. Similar patterns have been highlighted by Lebourgeois et al. (2013) who found that the shift in the response of silver fir (*Abies alba* Mill) to climate induced by mixing was restricted to the driest sites. In our study, complementarity could lead to a reduction of the summer constraint and therefore to a lower dependency to previous summer and current September climatic conditions. Nevertheless, future research effort should be dedicated to high constrained conditions to assess the significance of species-mixing effects and the mechanisms at play. In the absence of any major climatic constraint, the effects of species interactions on climate-growth relationships would be mainly driven by local site conditions, whose diversity within a region would explain the lack of any coherent response (see next section).

While admixing pine in beech stands was shown to reduce the constraint on beech trees in water-limited conditions (González de Andrés et al., 2017), other climatic variables might also impose limitations which could be more difficult to alleviate through mixing such as low temperatures throughout the year. Change in microclimate conditions resulting from difference in canopy structure, phenology or modifications in the length of the growing period, have been reported for some mixtures with respect to their monocultures (e.g. Lebourgeois et al. 2013; Ehbrecht et al. 2017), yet the extent to which this affects growth still remains to be documented.

3.3. Response to a drought event

We found limited evidence that species-mixing effects on drought resistance were shaped by the climate variables controlling tree growth. The fact that drought reaction was different between sites from groups showing similar climate-growth relationships and common climatic characteristics suggests a strong influence of local characteristics such as soil condition. Only the low-elevation and non water-limited sites from the Northwestern part of Europe (Fig. 2), showed a coherent species-mixing effect on drought resistance, yet limited to pine (Fig. 5D). As shown in Figs. 3 and 6, for pine many sites displaying high $P - PET_{fall}$ values showed lower growth reduction during drought events in mixed stands than in pure ones. Such favorable climatic conditions at the end of the vegetation period would allow pine to take advantage of its longer vegetation period to compensate for any drought limitation experienced during spring and/or summer; during this late growing period, pine growth could be further favored by the earlier reduction of beech photosynthetic activity.

Such effect may however be offset by factors varying at the site level, such as difference in the characteristics of triggering years (e.g. differences in droughts timing – D’Orangeville et al. 2018) or in local conditions of soil water availability (Carrière et al., 2020). Although we were not able to consistently assess the impact of potential available soil water on drought response due to a lack of soil data in many sites, the information available at some sites shows it ranged between 28 and 715 mm (de Streel et al., 2019); such a large range is expected to greatly impact tree response to drought (Lévesque et al., 2013).

Last, the interannual variation of drought response and of its modulation by mixing within a given site suggests that the timing, duration and intensity of the drought events is important. For instance, Bhuyan et al. (2017) showed that beech was sensitive to both short- and long-term drought although this sensitivity to drought length was dependent on site climate. Several studies have also shown that drought timing and intensity were major determinants of tree growth response. Tree growth proved to be more severely affected by more intense drought (D'Orangeville et al. 2018) and, depending on its timing, droughts have specific effects on different species depending on their characteristics such as phenology (Vanhellemont et al., 2019).

Our results also showed contrasting patterns between beech and pine, in terms of both response to drought and mixing effects. Regarding the reaction to drought, the number of non-responsive sites was much higher for beech compared to pine. In addition, pine and beech most often differed in the timing of their drought response within similar sites, reflecting contrasting sensitivity to drought and suggesting a large decoupling in possible mixing effects between those two species. As previously stated, while no main effect of mixing could be detected for neither species, pine showed a positive mixing effect in sites with high ($P - PET$) in the late growing period.

Those differences in drought response and mixing effects between the two species remain difficult to clearly explain and could be linked to their respective stomatal adjustment capacity to avoid water stress (isohydric vs. anisohydric behavior) (Bello et al. 2019) or to their carbon storage and carbon mobilization strategies during drought (Michelot et al. 2012; Lassoie and Salo, 1981; Lévesque et al., 2014; Seidel et al., 2019).

Because beech and pine were found to respond to distinct drought events, we might expect temporal stability to be higher in mixed compared to pure stands. This is coherent with the results from del Río et al. (2017) using the same triplet network who found an increased in temporal stability of productivity at the community level in mixed stands.

Conclusion

We explored the large-scale spatial patterns of species-mixing influence on climate-growth relationships and resistance to drought events for European beech and Scots pine across Europe. We found limited support to our initial hypothesis that the impact of mixing on the response to climate and drought event would be mostly driven by the regional climate, resulting in a coherent response of both climate-tree growth relationships and drought resistance to mixing within climatic groups.

Our results show that there seldom is a coherent species mixing effect, even when considering sites that display similar climate-growth relationships and that share similar climatic characteristics. In absence of strong limiting climate conditions, forest managers should therefore not expect species-mixing to have a coherent effect on climate-growth relationships. Species-mixing could have beneficial or detrimental effects on growth sensitivity to climate depending on local conditions. If there is no major climatic constraint or if species-mixing does not alleviate it, the relative sensitivity of tree climate-growth relationship to climatic and edaphic conditions will lead to positive, neutral or negative species-mixing effects, depending on local factors.

Regarding the resistance to drought, we were unable to detect any significant mixing effect for neither of the species, and no clear geographical pattern emerged. Interestingly however, regional climate was found to potentially impact pine resistance, through a positive effect of higher climatic water balance in autumn, suggesting compensatory growth.

Our results showed that the regional climate only partly determined the impact of mixing on the tree-growth relationships, and highlight the interacting influences of species identity, stand characteristics, drought events characteristics as well as local site conditions. Integrating all those factors into mechanistic models of tree growth such as HETEROFOR (Jonard et al. 2020) is the next step to quantify the relative contribution of each, and to be able to make reliable context-dependent predictions.

Acknowledgements

The networking in this study has been supported by the COST Action FP1206 EUMIXFOR. All authors thank the numerous persons who contributed to the fieldwork in the different sites across Europe. We acknowledge the E-OBS dataset from the EU-FP6 project ENSEMBLES (<http://ensembles-eu.metoffice.com>) and the data providers in the ECA&D project (<http://www.ecad.eu>).

References

- Albrich, K., Rammer, W., Thom, D., & Seidl, R. 2018. Trade-offs between temporal stability and level of forest ecosystem services provisioning under climate change. *Ecological Applications*, 28(7), 1884-1896. <https://doi.org/10.1002/eap.1785>
- Allen, C. D., Macalady, A. K., Chenchouni, H., Bachelet, D., McDowell, N., Vennetier, M., ... & Gonzalez, P. 2010. A global overview of drought and heat-induced tree mortality reveals emerging climate change risks for forests. *Forest ecology and management*, 259(4), 660-684. <https://doi.org/10.1016/j.foreco.2009.09.001>
- Aubin, I., Munson, A. D., Cardou, F., Burton, P. J., Isabel, N., Pedlar, J. H., ... & Messier, C. 2016. Traits to stay, traits to move: a review of functional traits to assess sensitivity and adaptive capacity of temperate and boreal trees to climate change. *Environmental Reviews*, 24(2), 164-186. <https://doi.org/10.1139/er-2015-0072>
- Ammer, C. 2019. Diversity and forest productivity in a changing climate. *New Phytologist*, 221(1), 50-66. <https://doi.org/10.1111/nph.15263>
- Balneaves, J. M., & De La Mare, P. J. 1989. Root patterns of *Pinus radiata* on five ripping treatments in a Canterbury forest. *New Zealand journal of forestry science*, 19(1), 29-40.
- Babst, F., Poulter, B., Trouet, V., Tan, K., Neuwirth, B., Wilson, R., ... & Panayotov, M. 2013. Site-and species-specific responses of forest growth to climate across the European continent. *Global Ecology and Biogeography*, 22(6), 706-717. <https://doi.org/10.1111/geb.12023>
- Barbeito, I., Dassot, M., Bayer, D., Collet, C., Drössler, L., Löf, M., ... & Pretzsch, H. (2017). Terrestrial laser scanning reveals differences in crown structure of *Fagus sylvatica* in mixed vs. pure European forests. *Forest Ecology and Management*, 405, 381-390.

- Becker, M., 1989. The role of climate on present and past vitality of silver fir forests in the Vosges mountains of northeastern France. *Can. J. For. Res.* 19, 1110–1117. <https://doi.org/10.1139/x89-168>
- Beguería S., Vicente-Serrano S.M., Reig F. and Latorre B. 2014) Standardized precipitation evapotranspiration index (SPEI) revisited: parameter fitting, evapotranspiration models, tools, datasets and drought monitoring. *International Journal of Climatology*, **34**(10): 3001-3023. <https://doi.org/10.1002/joc.3887>
- Bello, J., Vallet, P., Perot, T., Balandier, P., Seigner, V., Perret, S., ... & Korboulewsky, N. 2019. How do mixing tree species and stand density affect seasonal radial growth during drought events?. *Forest Ecology and Management*, *432*, 436-445. <https://doi.org/10.1016/j.foreco.2018.09.044>
- Bertness, M. D., & Callaway, R. (1994). Positive interactions in communities. *Trends in ecology & evolution*, *9*(5), 191-193.
- Bert, D., Lebourgeois, F., Ponton, S., Musch, B., & Ducouso, A. 2020. Which oak provenances for the 22nd century in Western Europe? Dendroclimatology in common gardens. *Plos one*, *15*(6), e0234583. <https://doi.org/10.1371/journal.pone.0234583>
- Bhuyan, U., Zang, C., & Menzel, A. (2017). Different responses of multispecies tree ring growth to various drought indices across Europe. *Dendrochronologia*, *44*, 1-8. <https://doi.org/10.1016/j.dendro.2017.02.002>
- Blasing, T. J., Solomon, A. M., & Duvick, D. N. 1984. Response functions revisited. *Tree-Ring Bulletin*, vol. 44, pp. 1-15.
- Bolte, A., Ammer, C., Löf, M., Madsen, P., Nabuurs, G. J., Schall, P., ... & Rock, J. 2009. Adaptive forest management in central Europe: climate change impacts, strategies and integrative concept. *Scandinavian Journal of Forest Research*, *24*(6), 473-482. <https://doi.org/10.1080/02827580903418224>

Boisvenue, C., & Running, S. W. 2006. Impacts of climate change on natural forest productivity—evidence since the middle of the 20th century. *Global Change Biology*, 12(5), 862-882. <https://doi.org/10.1111/j.1365-2486.2006.01134.x>

Bosela, M., Lukac, M., Castagneri, D., Sedmák, R., Biber, P., Carrer, M., ... & Roibu, C. C. 2018. Contrasting effects of environmental change on the radial growth of co-occurring beech and fir trees across Europe. *Science of the Total Environment*, 615, 1460-1469. <https://doi.org/10.1016/j.scitotenv.2017.09.092>

Bowditch, E., Santopuoli, G., Binder, F., del Río, M., La Porta, N., Kluvankova, T., ... & Tognetti, R. (2020). What is Climate-Smart Forestry? A definition from a multinational collaborative process focused on mountain regions of Europe. *Ecosystem Services*, 43, 101113. <https://doi.org/10.1016/j.ecoser.2020.101113>

Briffa K.R., Osborn T.J., Schweingruber F.H., Jones P.D., Shiyatov S.G., Vaganov E.A. 2002. Tree-ring width and density data around the Northern Hemisphere: Part 1, local and regional climate signals. *The Holocene*.;12(6):737-757.
doi:[10.1191/0959683602hl587rp](https://doi.org/10.1191/0959683602hl587rp)

Carrière, S. D., Ruffault, J., Pimont, F., Doussan, C., Simioni, G., Chalikakis, K., ... & Davi, H. 2020. Impact of local soil and subsoil conditions on inter-individual variations in tree responses to drought: insights from Electrical Resistivity Tomography. *Science of the Total Environment*, 698, 134247. <https://doi.org/10.1016/j.scitotenv.2019.134247>

Chaves, M. M., Pereira, J. S., Maroco, J., Rodrigues, M. L., Ricardo, C. P. P., Osório, M. L., ... & Pinheiro, C. 2002. How plants cope with water stress in the field? Photosynthesis and growth. *Annals of botany*, 89(7), 907-916.
<https://doi.org/10.1093/aob/mcf105>

Choat, B., Jansen, S., Brodribb, T. J., Cochard, H., Delzon, S., Bhaskar, R., ... & Jacobsen, A. L. 2012. Global convergence in the vulnerability of forests to drought. *Nature*, 491(7426), 752-755. <https://doi.org/10.1038/nature11688>

Choisnel, E., Villele, O.D., Lacroze, F. 1992. Commission of the European and C. Joint Research. Une approche uniformisee du calcul de l'evapotranspiration potentielle pour l'ensemble des pays de la communaute europeenne.

Cochard, H. 1992 Vulnerability of several conifers to air embolism. *Tree Physiol* 11(1):73–83.

<https://doi.org/10.1093/treephys/11.1.73>

Condés, S., Del Rio, M., & Sterba, H. 2013. Mixing effect on volume growth of *Fagus sylvatica* and *Pinus sylvestris* is modulated by stand density. *Forest Ecology and Management*, 292, 86-95. <https://doi.org/10.1016/j.foreco.2012.12.013>

Cook, E.R., Peters, K., 1981. The smoothing spline: a new approach to standardizing forest interior tree-ring width series for dendroclimatic studies. *Tree-ring Bull.* 41, 45–53.

Cook, E. R., & Kairiukstis, L. A. (Eds.). 2013. *Methods of dendrochronology: applications in the environmental sciences*. Springer Science & Business Media.

Curt, T., & Prévosto, B. 2003. Rooting strategy of naturally regenerated beech in Silver birch and Scots pine woodlands. In *Roots: The Dynamic Interface between Plants and the Earth* (pp. 265-279). Springer, Dordrecht.

https://doi.org/10.1007/978-94-017-2923-9_26

D'andrea E., Rezaie N., Prislán P., Gričar J., Collalti A., Muhr J., Matteucci G. 2020. Frost and drought: Effects of extreme weather events on stem carbon dynamics in a Mediterranean beech forest. *Plant, Cell & Environment* 43: 2365-79.

<https://doi.org/10.1111/pce.13858>

Dawud, S. M., Raulund-Rasmussen, K., Ratcliffe, S., Domisch, T., Finér, L., Joly, F. X., ... & Vesterdal, L. 2017. Tree species functional group is a more important driver of soil properties than tree species diversity across major European forest types. *Functional Ecology*, 31(5), 1153-1162. <https://doi.org/10.1111/1365-2435.12821>

del Castillo, J., Comas, C., Voltas, J., & Ferrio, J. P. 2016. Dynamics of competition over water in a mixed oak-pine Mediterranean forest: Spatio-temporal and physiological components. *Forest Ecology and Management*, 382, 214-224. <https://doi.org/10.1016/j.foreco.2016.10.025>

del Río, M., Pretzsch, H., Ruíz-Peinado, R., Ampoorter, E., Annighöfer, P., Barbeito, I., ... & Fabrika, M. 2017. Species interactions increase the temporal stability of community productivity in *Pinus sylvestris*–*Fagus sylvatica* mixtures across Europe. *Journal of Ecology*, 105(4), 1032-1043. <https://doi.org/10.1111/1365-2745.12727>

de Streef, G., Collet, C., Barbeito, I., Bielak, K., Bravo-Oviedo, A., Brazaitis, G., ... & Löf, M. 2019. Contrasting patterns of tree species mixture effects on wood $\delta^{13}\text{C}$ along an environmental gradient. *European Journal of Forest Research*, 1-17. [doi:10.1007/s10342-019-01224-z](https://doi.org/10.1007/s10342-019-01224-z)

de Streef, G., Ammer, C., Annighöfer, P., Barbeito, I., Bielak, K., Bravo-Oviedo, A., ... & Ponette, Q. 2021. Mixing has limited impacts on the foliar nutrition of European beech and Scots pine trees across Europe. *Forest Ecology and Management*, 479, 118551.

Dieler, J., & Pretzsch, H. 2013. Morphological plasticity of European beech (*Fagus sylvatica* L.) in pure and mixed-species stands. *Forest Ecology and Management*, 295, 97–108. <https://doi.org/10.1016/j.foreco.2012.12.049>

D'Orangeville, L, Maxwell, J, Kneeshaw, D, et al. Drought timing and local climate determine the sensitivity of eastern temperate forests to drought. *Glob Change Biol.* 2018; 24: 2339– 2351. <https://doi.org/10.1111/gcb.14096>

Droogers P, Allen R 2002. Estimating Reference Evapotranspiration Under Inaccurate Data Conditions. *Irrigation and Drainage Systems*, **16**(1): 33-45. <https://doi.org/10.1023/A:1015508322413>

Ehbrecht, M., Schall, P., Ammer, C., & Seidel, D. (2017). Quantifying stand structural complexity and its relationship with forest management, tree species diversity and microclimate. *Agricultural and Forest Meteorology*, *242*, 1-9. <https://doi.org/10.1016/j.agrformet.2017.04.012>

Filella, I., & Peñuelas, J. (2003). Partitioning of water and nitrogen in co-occurring Mediterranean woody shrub species of different evolutionary history. *Oecologia*, *137*(1), 51-61.

Forrester, D. I. 2014. The spatial and temporal dynamics of species interactions in mixed-species forests: from pattern to process. *Forest Ecology and Management*, *312*, 282-292.

Forrester, D. I., & Bauhus, J. 2016. A review of processes behind diversity—productivity relationships in forests. *Current Forestry Reports*, *2*(1), 45-61. [10.1007/s40725-016-0031-2](https://doi.org/10.1007/s40725-016-0031-2)

Forrester, D. I., Ammer, C., Annighöfer, P. J., Barbeito, I., Bielak, K., Bravo-Oviedo, A., ... & Pretzsch, H. 2018. Effects of crown architecture and stand structure on light absorption in mixed and monospecific *Fagus sylvatica* and *Pinus sylvestris* forests along a productivity and climate gradient through Europe. *Journal of Ecology*, *106*(2), 746-760.

Frischbier, N., Nikolova, P. S., Brang, P., Klumpp, R., Aas, G., & Binder, F. 2019. Climate change adaptation with non-native tree species in Central European forests: early tree survival in a multi-site field trial. *European Journal of Forest Research*, *138*(6), 1015-1032. <https://doi.org/10.1007/s10342-019-01222-1>

Gazol, A., & Camarero, J. J. 2016. Functional diversity enhances silver fir growth resilience to an extreme drought. *Journal of Ecology*, 104(4), 1063-1075. <https://doi.org/10.1111/1365-2745.12575>.

González de Andrés, E., Seely, B., Blanco, J. A., Imbert, J. B., Lo, Y.-H., & Castillo, F. J. 2017. Increased complementarity in water-limited environments in Scots pine and European beech mixtures under climate change. *Ecohydrology*, 10(2), e1810. doi:10.1002/eco.1810

González de Andrés, E., Camarero, J. J., Blanco, J. A., Imbert, J. B., Lo, Y. H., Sangüesa-Barreda, G., & Castillo, F. J. 2018. Tree-to-tree competition in mixed European beech–Scots pine forests has different impacts on growth and water-use efficiency depending on site conditions. *Journal of Ecology*, 106(1), 59-75. <https://doi.org/10.1111/1365-2745.12813>

Grossiord, C. (2020). Having the right neighbors: how tree species diversity modulates drought impacts on forests. *New Phytologist*, 228(1), 42-49.

Grossiord, C., Granier, A., Ratcliffe, S., Bouriaud, O., Bruelheide, H., Chećko, E., ... & Gessler, A. 2014. Tree diversity does not always improve resistance of forest ecosystems to drought. *Proceedings of the National Academy of Sciences*, 111(41), 14812-14815. <https://doi.org/10.1073/pnas.1411970111>

Grossiord, C., Granier, A., Gessler, A., Jucker, T., & Bonal, D. 2014b. Does drought influence the relationship between biodiversity and ecosystem functioning in boreal forests?. *Ecosystems*, 17(3), 394-404. <https://doi.org/10.1007/s10021-013-9729-1>

Guiot, J. 1991. The bootstrapped response function. *Tree-ring bulletin* 51: 39-41

- Grill D., Tausz M., Pöllinger U., Jiménez M.S., Morales D. 2004. Effects of drought on needle anatomy of *Pinus canariensis*. *Flora* 199:85–89. <https://doi.org/10.1078/0367-2530-00137>
- Heym, M., Ruíz-Peinado, R., Del Río, M., Bielak, K., Forrester, D. I., Dirnberger, G., ... & Fabrika, M. 2017. EuMIXFOR empirical forest mensuration and ring width data from pure and mixed stands of Scots pine (*Pinus sylvestris* L.) and European beech (*Fagus sylvatica* L.) through Europe. *Annals of Forest Science*, 74(3), 63. <https://doi.org/10.1007/s13595-017-0660-z>
- Isbell F., Craven D., Connolly J. et al. 2015. Biodiversity increases the resistance of ecosystem productivity to climate extremes. *Nature*, 526(7574), 574. <https://doi.org/10.1038/nature15374>
- Jactel, H., & Brockerhoff, E. G. 2007. Tree diversity reduces herbivory by forest insects. *Ecology letters*, 10(9), 835-848. <https://doi.org/10.1111/j.1461-0248.2007.01073.x>
- Jetschke, G., van der Maaten, E., & van der Maaten-Theunissen, M. 2019. Towards the extremes: A critical analysis of pointer year detection methods. *Dendrochronologia*, 53, 55-62. <https://doi.org/10.1016/j.dendro.2018.11.004>
- Jonard, M., André, F., de Coligny, F., de Wergifosse, L., Beudez, N., Davi, H., ... & Vincke, C. (2020). HETEROFOR 1.0: a spatially explicit model for exploring the response of structurally complex forests to uncertain future conditions—Part 1: Carbon fluxes and tree dimensional growth. *Geoscientific Model Development*, 13, 905-935. <https://doi.org/10.5194/gmd-13-905-2020>
- Kozłowski, T.T. 1986. Soil aeration and growth of forest trees (review article). *Scand J For Res* 1(1–4):113–123. <https://doi.org/10.1080/02827588609382405>

Lassoie, J. P., & Salo, D. J. 1981. Physiological response of large Douglas-fir to natural and induced soil water deficits. *Canadian Journal of Forest Research*, 11(1), 139-144. <https://doi.org/10.1139/x81-019>

Lebourgeois, F., Gomez, N., Pinto, P., & Mérian, P. 2013. Mixed stands reduce *Abies alba* tree-ring sensitivity to summer drought in the Vosges mountains, western Europe. *Forest Ecology and management*, 303, 61-71.
<https://doi.org/10.1016/j.foreco.2013.04.003>

Lebourgeois F., Eberlé P., Mérian P., Seynave I. 2014. Social status-mediated tree-ring responses to climate of *Abies alba* and *Fagus sylvatica* shift in importance with increasing stand basal area. *Forest Ecology and Management* 328:209-218.
<https://doi.org/10.1016/j.foreco.2014.05.038>

Lévesque, M., Saurer, M., Siegwolf, R., Eilmann, B., Brang, P., Bugmann, H. and Rigling, A. (2013), Drought response of five conifer species under contrasting water availability suggests high vulnerability of Norway spruce and European larch. *Glob Change Biol*, 19: 3184-3199. <https://doi.org/10.1111/gcb.12268>

Lévesque, M., Rigling, A., Bugmann, H., Weber, P., & Brang, P. 2014. Growth response of five co-occurring conifers to drought across a wide climatic gradient in Central Europe. *Agricultural and Forest Meteorology*, 197, 1-12.
<https://doi.org/10.1016/j.agrformet.2014.06.001>

Linton, M.J., Sperry, J.S. and Williams, D.G. (1998), Limits to water transport in *Juniperus osteosperma* and *Pinus edulis*: implications for drought tolerance and regulation of transpiration. *Functional Ecology*, 12: 906-911. <https://doi.org/10.1046/j.1365-2435.1998.00275.x>

Lloret, F., Casanovas, C., Penuelas, J. 1999. Seedling survival of Mediterranean shrubland species in relation to root:shoot ratio, seed size and water and nitrogen use. *Funct Ecol* 13:210–216

Martín-Benito, D., Del Río, M., Heinrich, I., Helle, G., & Canellas, I. 2010. Response of climate-growth relationships and water use efficiency to thinning in a *Pinus nigra* afforestation. *Forest Ecology and Management*, 259(5), 967-975.
<https://doi.org/10.1016/j.foreco.2009.12.001>

Martínez-Vilalta J., Sala A., Piñol J. 2004. The hydraulic architecture of Pinaceae—a review. *Plant Ecol* 171(1):3–13.
<https://doi.org/10.1023/B:VEGE.0000029378.87169.b1>

Martínez –Vilalta, J., Cochard, H., Mencuccini, M., Sterck, F., Herrero, A., Korhonen, J.F.J., Llorens, P., Nikinmaa, E., Nole, A., Poyatos, R., Ripullone, F., Sass-Klaassen, U., Zweifel, R. 2009 Hydraulic adjustment of Scots pine across Europe. *New Phytol* 184:353–36

Martínez –Vilalta, J., Lopez, B.C., Loepfe, L., Lloret, F. 2012 Stand- and tree-level determinants of the drought response of Scots pine radial growth. *Oecologia* 168:877–888. doi:10.1007/s00442- 011-2132-8

Meir, P., Mencuccini, M. and Dewar, R.C. 2015. Drought-related tree mortality: addressing the gaps in understanding and prediction. *New Phytol*, 207: 28-33. <https://doi.org/10.1111/nph.13382>

Mérian P. 2012. POINTER and DENDRO - Two applications under R software for analyzing tree response to climate using dendroecological approach. *Revue For Fr* 64:789–798. <https://doi.org/10.4267/2042/51116>

Mérian, P., & Lebourgeois, F. (2011). Size-mediated climate–growth relationships in temperate forests: a multi-species analysis. *Forest Ecology and Management*, 261(8), 1382-1391.

Mérian, P., Bert, D., & Lebourgeois, F. 2013. An approach for quantifying and correcting sample size-related bias in population estimates of climate-tree growth relationships. *Forest Science*, 59(4), 444-452.
<https://doi.org/10.5849/forsci.12-047>.

Metz, J., Annighöfer, P., Schall, P., Zimmermann, J., Kahl, T., Schulze, E.-D. and Ammer, C. 2016. Site-adapted admixed tree species reduce drought susceptibility of mature European beech. *Glob Change Biol*, 22: 903-920. <https://doi.org/10.1111/gcb.13113>

Michelot, A., Simard, S., Rathgeber, C., Dufrêne, E., & Damesin, C. 2012. Comparing the intra-annual wood formation of three European species (*Fagus sylvatica*, *Quercus petraea* and *Pinus sylvestris*) as related to leaf phenology and non-structural carbohydrate dynamics. *Tree physiology*, 32(8), 1033-1045. <https://doi.org/10.1093/treephys/tps052>

Milios, E., 2004. The influence of stand development process on the height and volume growth of dominant *Fagus sylvatica* L. s.l. trees in the central Rhodope Mountains of north-eastern Greece , *Forestry: An International Journal of Forest Research*, Volume 77, Issue 1, Pages 17–26, <https://doi.org/10.1093/forestry/77.1.17>

Pflug, E.E., Buchmann, N., Siegwolf, R.T., Schaub, M., Rigling, A., Arend, M. 2018. Resilient leaf physiological response of European beech (*Fagus sylvatica* L.) to summer drought and drought release. *Front Plant Sci* 9:187.
<https://doi.org/10.3389/fpls.2018.00187>

Pretzsch, H., Schütze, G., & Uhl, E. 2013. Resistance of European tree species to drought stress in mixed versus pure forests: evidence of stress release by inter-specific facilitation. *Plant Biology*, 15(3), 483-495.
<https://doi.org/10.1111/j.1438-8677.2012.00670.x>

Pretzsch, H., del Río, M., Ammer, C., Avdagic, A., Barbeito, I., Bielak, K., ... & Fabrika, M. 2015. Growth and yield of mixed versus pure stands of Scots pine (*Pinus sylvestris* L.) and European beech (*Fagus sylvatica* L.) analysed along a productivity gradient through Europe. *European Journal of Forest Research*, 134(5), 927-947.

<https://doi.org/10.1007/s10342-015-0900-4>

Pretzsch, H. and Biber, P. 2016. Tree species mixing can increase maximum stand density. *Canadian Journal of Forest Research*. 46(10): 1179-1193. <https://doi.org/10.1139/cjfr-2015-0413>

Pretzsch, H., Grams, T., Häberle, K. H., Pritsch, K., Bauerle, T., & Rötzer, T. (2020). Growth and mortality of Norway spruce and European beech in monospecific and mixed-species stands under natural episodic and experimentally extended drought. Results of the KROOF throughfall exclusion experiment. *Trees*, 34(4), 957-970.

<https://doi.org/10.1007/s00468-020-01973-0>

Prévosto, B., & Curt, T. 2004. Dimensional relationships of naturally established European beech trees beneath Scots pine and Silver birch canopy. *Forest ecology and management*, 194(1-3), 335-348.

<https://doi.org/10.1016/j.foreco.2004.02.020>

Pritzkow, C., Williamson, V., Szota, C., Trouvé, R., Arndt, S.K. 2020. Phenotypic plasticity and genetic adaptation of functional traits influences intra-specific variation in hydraulic efficiency and safety, *Tree Physiology*, 40(2),

215–229, <https://doi.org/10.1093/treephys/tpz121>

R Core Team 2019. *R: A language and environment for statistical computing*. Vienna: R Foundation for Statistical Computing, Vienna, Austria.

Ratcliffe, S., Wirth, C., Jucker, T., van der Plas, F., Scherer-Lorenzen, M., Verheyen, K., Allan, E., Benavides, R., Bruelheide, H., Ohse, B., Paquette, A., Ampoorter, E., Bastias, C.C., Bauhus, J., Bonal, D., Bouriaud, O., Bussotti, F., Carnol, M., Castagneyrol, B., Chećko, E., Dawud, S.M., Wandeler, H.D., Domisch, T., Finér, L., Fischer, M., Fotelli, M., Gessler, A., Granier, A., Grossiord, C., Guyot, V., Haase, J., Hättenschwiler, S., Jactel, H., Jaroszewicz, B., Joly, F.-X., Kambach, S., Kolb, S., Koricheva, J., Liebersgesell, M., Milligan, H., Müller, S., Muys, B., Nguyen, D., Nock, C., Pollastrini, M., Purschke, O., Radoglou, K., Raulund-Rasmussen, K., Roger, F., Ruiz-Benito, P., Seidl, R., Selvi, F., Seiferling, I., Stenlid, J., Valladares, F., Vesterdal, L. and Baeten, L. 2017, Biodiversity and ecosystem functioning relations in European forests depend on environmental context. *Ecol Lett*, 20: 1414-1426. <https://doi.org/10.1111/ele.12849>

Richman, M. B. 1986. Rotation of principal components. *Journal of climatology*, 6(3), 293-335. <https://doi.org/10.1002/joc.3370060305>

Schäfer, C., Grams, T.E., Rötzer, T., Feldermann, A., Pretzsch, H. 2017. Drought stress reaction of growth and $\Delta^{13}\text{C}$ in tree rings of European beech and Norway spruce in monospecific versus mixed stands along a precipitation gradient. *Forests* 8(6):177. <https://doi.org/10.3390/f8060177>

Scherer-Lorenzen, M., Körner, C., Schulze ED. 2005. The Functional Significance of Forest Diversity: A Synthesis. In: Scherer-Lorenzen, M., Körner, C., Schulze ED. (eds) *Forest Diversity and Function. Ecological Studies (Analysis and Synthesis)*, vol 176. Springer, Berlin, Heidelberg. https://doi.org/10.1007/3-540-26599-6_17

Schweingruber, F.H., Eckstein, D., Serre-Bachet, F., Bräker, O.U., 1990. Identification, presentation and interpretation of event years and pointer years in dendrochronology. *Dendrochronologia* 8, 9–38.

Schwendenmann, L., Pendall, E., Sanchez-Bragado, R., Kunert, N., & Hölscher, D. (2015). Tree water uptake in a tropical plantation varying in tree diversity: interspecific differences, seasonal shifts and complementarity. *Ecohydrology*, 8(1), 1-12.

Seidel, H., Matiu, M., & Menzel, A. 2019. Compensatory growth of Scots pine seedlings mitigates impacts of multiple droughts within and across years. *Frontiers in plant science*, 10, 519. <https://doi.org/10.3389/fpls.2019.00519>

Seynave, I., Bailly, A., Balandier, P. *et al.* 2018. GIS Coop: networks of silvicultural trials for supporting forest management under changing environment. *Annals of Forest Science* 75, 48. <https://doi.org/10.1007/s13595-018-0692-z>

Steckel, M., Moser, W. K., del Río, M., & Pretzsch, H. 2020. Implications of Reduced Stand Density on Tree Growth and Drought Susceptibility: A Study of Three Species under Varying Climate. *Forests*, 11(6), 627.

<https://doi.org/10.3390/f11060627>

Stojnić, S., Suchocka, M., Benito-Garzón, M., Torres-Ruiz, J. M., Cochard, H., Bolte, A., ... & Delzon, S. 2018. Variation in xylem vulnerability to embolism in European beech from geographically marginal populations. *Tree Physiology*, 38(2), 173-185. <https://doi.org/10.1093/treephys/tpx128>

Thimonier, A., Dupouey, J. L., Bost, F., & Becker, M. (1994). Simultaneous eutrophication and acidification of a forest ecosystem in North-East France. *New phytologist*, 126(3), 533-539.

Thurm, E. A., Uhl, E., & Pretzsch, H. 2016. Mixture reduces climate sensitivity of Douglas-fir stem growth. *Forest Ecology and Management*, 376, 205-220. <https://doi.org/10.1016/j.foreco.2016.06.020>

Trouvé, R., Bontemps, J. D., Collet, C., Seynave, I., & Lebourgeois, F. 2017. Radial growth resilience of sessile oak after drought is affected by site water status, stand density, and social status. *Trees*, 31(2), 517-529.

[10.1007/s00468-016-1479-1](https://doi.org/10.1007/s00468-016-1479-1)

Van der Salm, C., Reinds, G. J., & de Vries, W. 2007. Water balances in intensively monitored forest ecosystems in Europe. *Environmental Pollution*, 148(1), 201-212. <https://doi.org/10.1016/j.envpol.2006.10.043>

Vandermeer, J. 1989. *The Ecology of Intercropping*. Cambridge University Press, New York, 237 p.

Vanhellemont, M., Sousa-Silva, R., Maes, S. L., Van den Bulcke, J., Hertzog, L., De Groote, S. R., ... & Verheyen, K. 2019. Distinct growth responses to drought for oak and beech in temperate mixed forests. *Science of The Total Environment*, 650, 3017-3026. <https://doi.org/10.1016/j.scitotenv.2018.10.054>

Vicente-Serrano S.M., Beguería S., López-Moreno J.I. 2010. A Multiscalar Drought Index Sensitive to Global Warming: The Standardized Precipitation Evapotranspiration Index. *Journal of Climate*, 23(7): 1696-1718.

<https://doi.org/10.1175/2009JCLI2909.1>

Vilà-Cabrera A., Coll L., Martínez-Vilalta A., Retana J. 2018. Forest management for adaptation to climate change in the Mediterranean basin: a synthesis of evidence. *Forest Ecology and Management* 407: 16-22.

<https://doi.org/10.1016/j.foreco.2017.10.021>

Wettstein, J. J., Littell, J. S., Wallace, J. M., & Gedalof, Z. E. 2011. Coherent region-, species-, and frequency-dependent local climate signals in Northern Hemisphere tree-ring widths. *Journal of Climate*, 24(23), 5998-6012.

<https://doi.org/10.1175/2011JCLI3822.1>

Table A1 Selected site and stand characteristics of the 30 sites. P: Mean annual precipitation sum [mm], T: Mean annual temperature [°C]. Age and basal area data in mixed stands are provided first for beech, then for pine.

Site name	Site number	Altitude [m]	P [mm]	T [°C]	Stand composition	Age [Years]	Basal area [m ² .ha ⁻¹]
Bel1	1057	545	1175	7.5	Beech	150	27
					Pine	150	11
					Beech/Pine	100/130	20/10
Bel2	1063	160	852	10.5	Beech	115	28
					Pine	115	40
					Beech/Pine	115/115	17/29
Bul1	1047	1187	750	6	Beech	65	41
					Pine	65	54
					Beech/Pine	65/65	37/42
Cze1	1049	440	620	7.5	Beech	45	36
					Pine	45	43
					Beech/Pine	45/45	13/26
Cze2	1058	545	656	7.1	Beech	55	38
					Pine	55	40
					Beech/Pine	55/55	13/22
Fra1	1040	275	948	9.7	Beech	60	26
					Pine	60	41
					Beech/Pine	60/60	15/17
Ger1	1033	430	700	8.5	Beech	53	23
					Pine	65	25
					Beech/Pine	50/50	16/17
Ger2	1031	250	720	9	Beech	55	44
					Pine	55	53
					Beech/Pine	55/55	53/27
Ger3	1032	250	650	8	Beech	50	34
					Pine	45	43

					Beech/Pine	45/45	13/31
					Beech	60	54
Ger4	1071	40	675	9	Pine	70	59
					Beech/Pine	70/70	28/24
					Beech	58	40
Ger5	1034	370	675	10	Pine	51	55
					Beech/Pine	64/64	17/22
					Beech	64	23
Ger6	1070	400	560	8	Pine	73	34
					Beech/Pine	60/60	11/28
					Beech	80	21
Ger7	1061	74	520	8.6	Pine	80	24
					Beech/Pine	80/80	12/4
					Beech	40	23
Ita1	1055	1037	1050	7.8	Pine	40	52
					Beech/Pine	40/40	10/12
					Beech	55	41
Ita2	1062	1475	938	7.9	Pine	55	47
					Beech/Pine	55/55	20/21

Table A1 (continued) Selected site and stand characteristics of the 30 sites. P: Mean annual precipitation sum [mm], T: Mean annual temperature [°C]. Age and basal area data in mixed stands are provided first for beech, then for pine.

Site name	Site number	Altitude [m]	P [mm]	T [°C]	Stand composition	Age [Years]	Basal area [m ² .ha ⁻¹]
					Beech	90	26
Lit1	1051	25	750	6.5	Pine	90	35
					Beech/Pine	90/90	20/43
					Beech	102	43
Lit2	1052	20	800	6.5	Pine	102	41

					Beech/Pine	102/102	18/41
					Beech	46	38
Net1	1043	34	825	9.7	Pine	48	39
					Beech/Pine	46/46	19/27
					Beech	84	37
Pol2	1036	136	666	7.9	Pine	74	36
					Beech/Pine	84/84	18/21
					Beech	54	38
Pol1	1035	60	556	9.2	Pine	54	42
					Beech/Pine	54/54	12/26
					Beech	80	31
Pol3	1037	383	662	7.8	Pine	81	41
					Beech/Pine	83/83	24/20
					Beech	57	18
Pol4	1044	209	650	8.2	Pine	57	30
					Beech/Pine	57/57	23/13
					Beech	55	25
Pol5	1045	215	650	8.2	Pine	55	34
					Beech/Pine	55/55	16/16
					Beech	75	20
Ser1	1056	1080	1020	7.7	Pine	75	33
					Beech/Pine	75/75	10/17
					Beech	55	45
Sk1	1046	530	730	6.9	Pine	55	45
					Beech/Pine	55/55	13/27
					Beech	40	33
Sp1	1042	1293	860	8.9	Pine	40	55
					Beech/Pine	40/40	14/39
					Beech	50	52
Sp2	1041	1106	1100	8	Pine	50	40
					Beech/Pine	50/50	21/11

					Beech	84	29
Swe1	1054	118	700	8	Pine	56	32
					Beech/Pine	106/106	20/20
					Beech	65	29
Swe2	1053	26	800	7	Pine	65	32
					Beech/Pine	65/65	20/20
					Beech	105	53
Ukr1	1060	315	673	7.6	Pine	105	64
					Beech/Pine	105/105	22/25

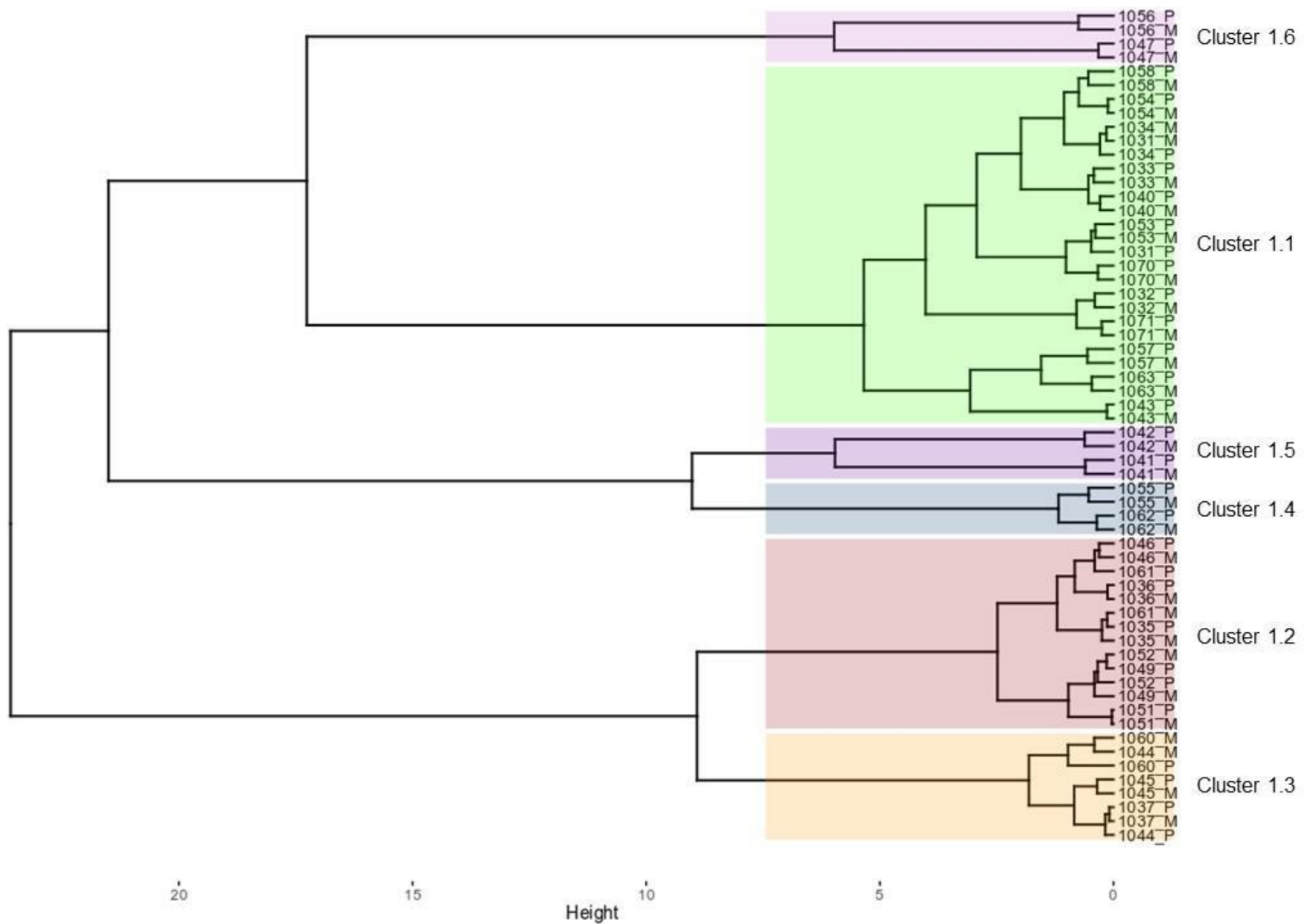


Fig. A1.1. Dendrograms of the ward D2 clustering performed on the first two principal components of the *PCA of the Bootstrapped Correlation Coefficients for beech between standardized tree-ring width of each strata (site x species x stand) and climatic variables*. Numbers are the site id (Table S1); P and M, refers to pure and mixed stands, respectively

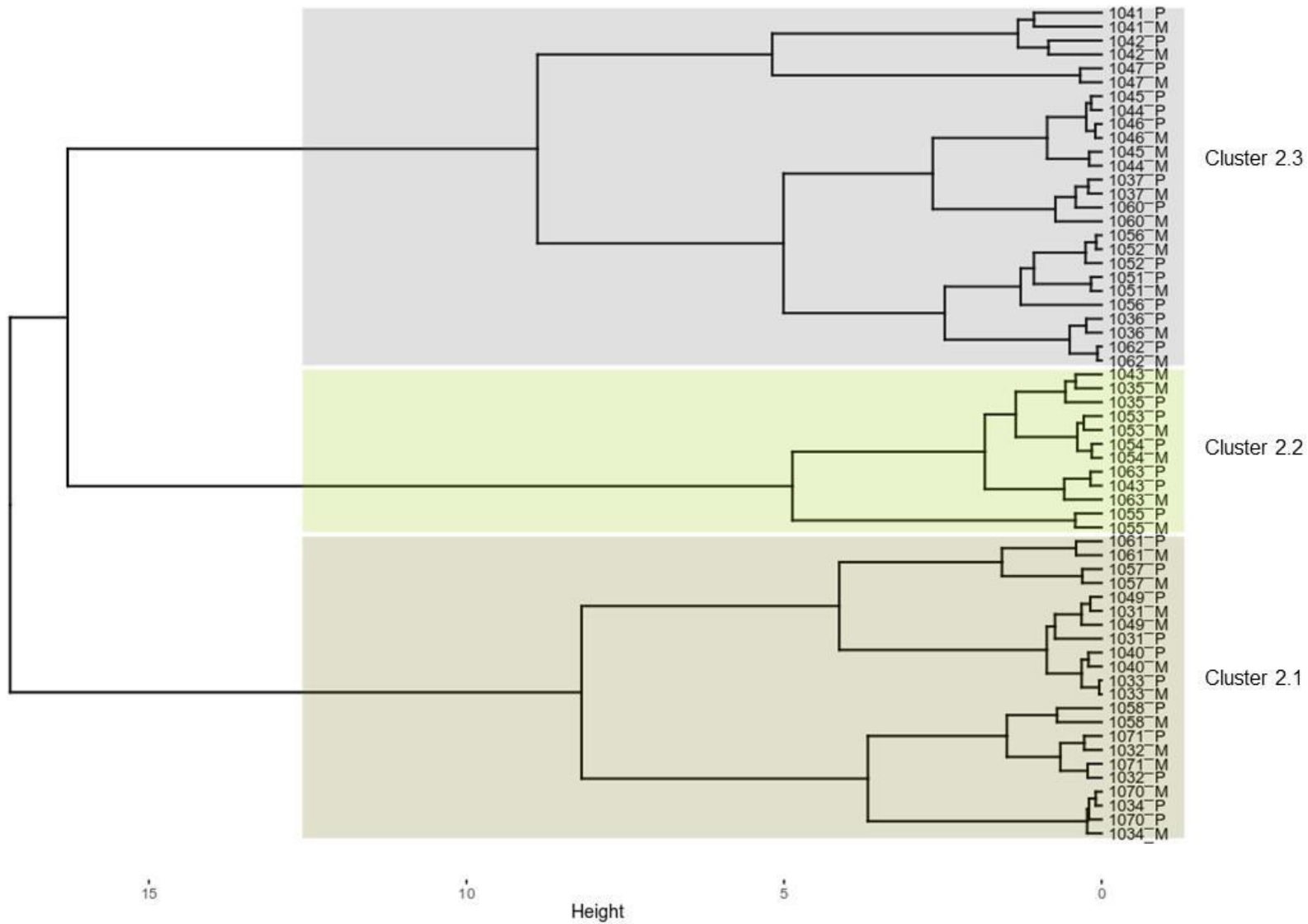


Figure A1.2. Dendrograms of the ward D2 clustering performed on the third and four principal components of the *PCA of the Bootstrapped Correlation Coefficients for beech between standardized tree-ring width of each strata (site x species x stand) and climatic variables*. Numbers are the site id (Table S1); P and M, refers to pure and mixed stands, respectively

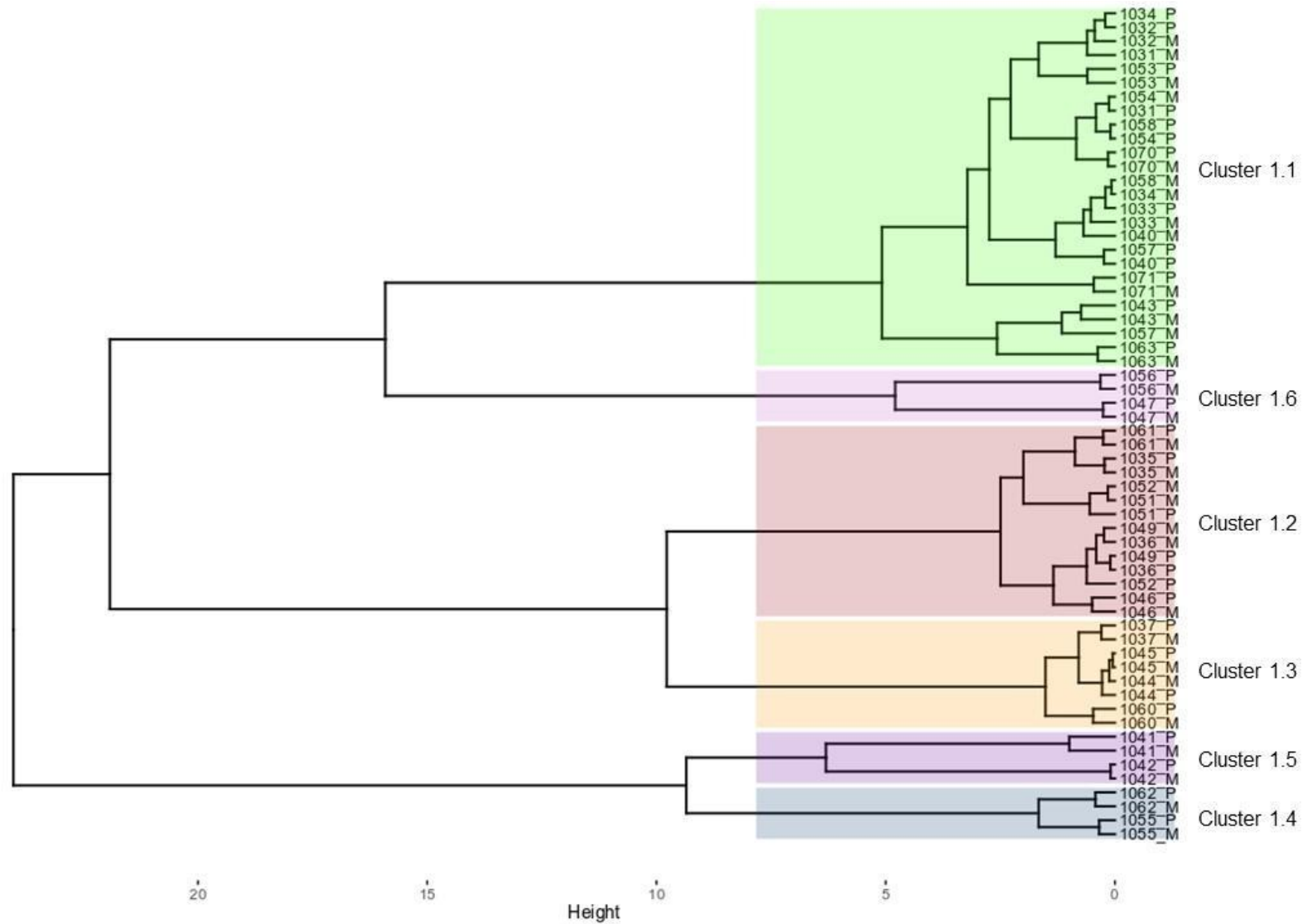


Figure A1.3. Dendrograms of the ward D2 clustering performed on the first two principal components of the *PCA of the Bootstrapped Correlation Coefficients for pine between standardized tree-ring width of each strata (site x species x stand) and climatic variables*. Numbers are the site id (Table S1); P and M, refers to pure and mixed stands, respectively

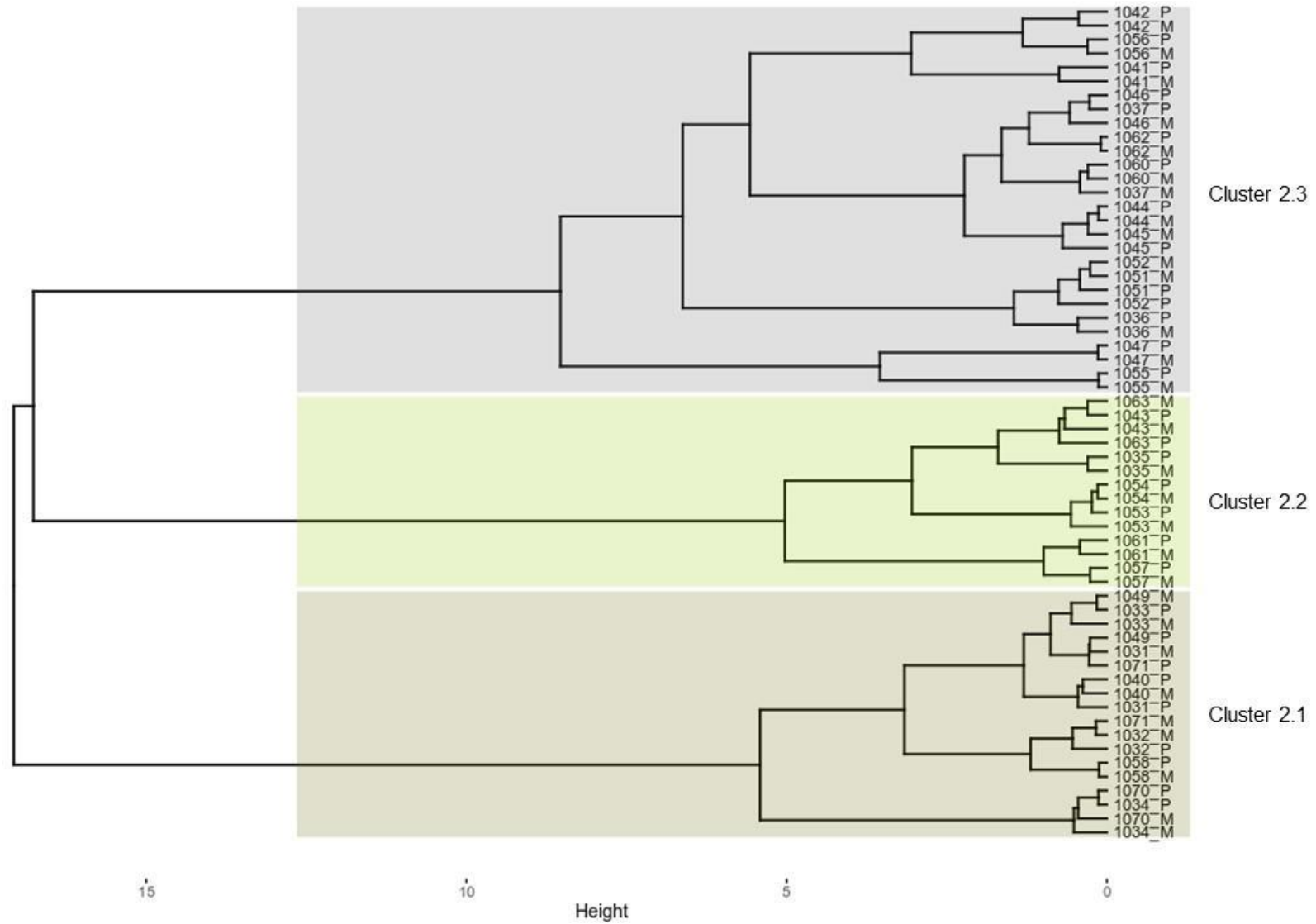


Figure A1.4. Dendrograms of the ward D2 clustering performed on the third and four principal components of the *PCA of the Bootstrapped Correlation Coefficients for pine between standardized tree-ring width of each strata (site x species x stand) and climatic variables*. Numbers are the site id (Table S1); P and M, refers to pure and mixed stands, respectively.

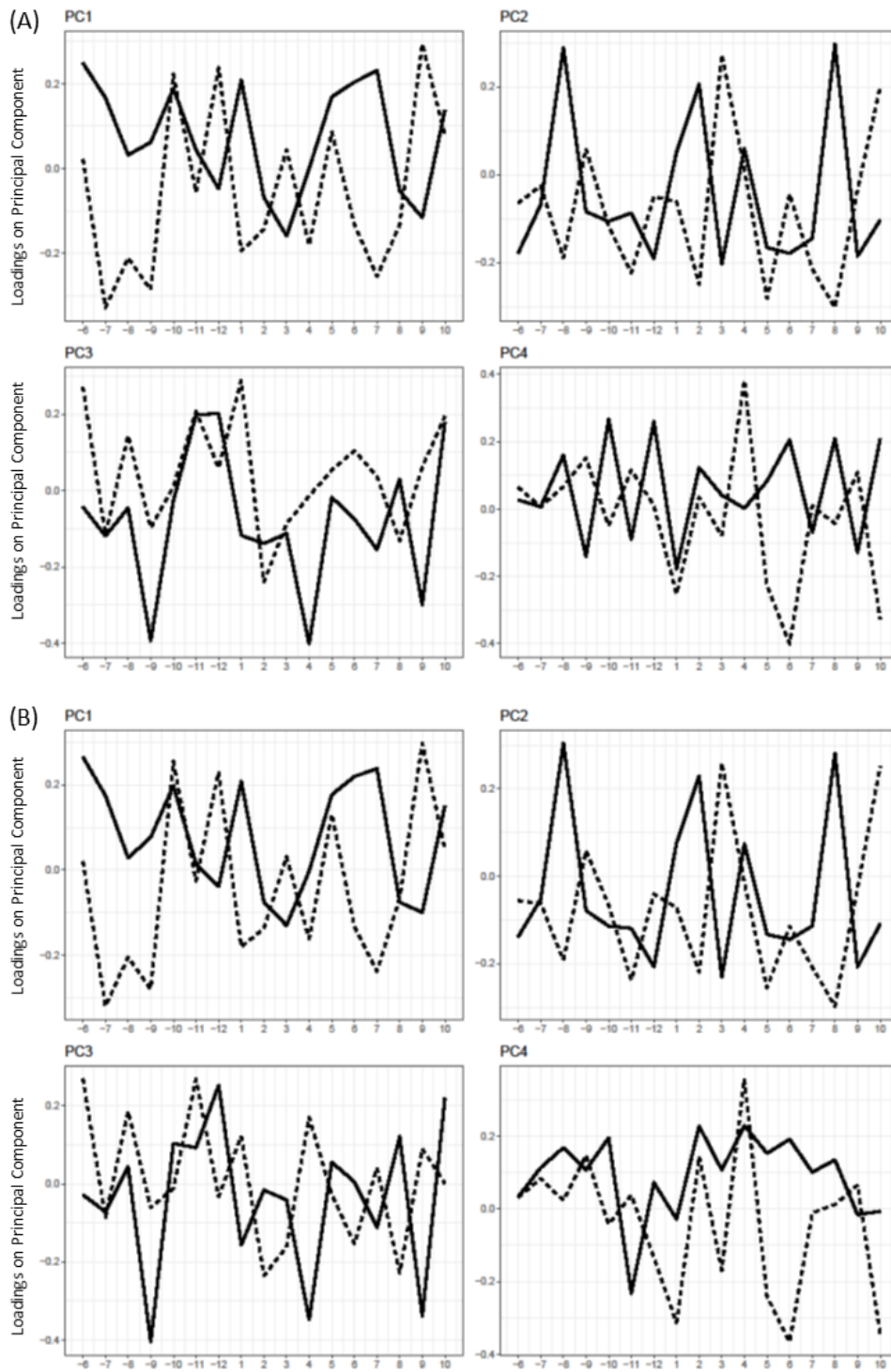


Fig. A2 SPEI (plain lines) and Tmean (dashed lines) loadings values on each of the 4 first principal components of the Principal Component Analysis performed on the Bootstrapped Correlation Coefficients between standardized tree-ring width of each stratum for beech (A) and pine (B). Months -6 to -12 correspond to June – December of the previous year.

Table A2.1. Radial Growth Variation during dry negative pointer years of cluster 1.1. Values in red indicate negative pointer years for which the drought happened the previous year. For brevity, only years with at least one dry pointer year are listed. Cells highlighted in yellow indicates year that are characteristic at the plot level.

Triplet	plot	species	1983	1984	1985	1986	1987	1988	1991	1992	1993	1994	1996	2000	2001	2003	2004	2006	2007	2008	2010	2011	2012	2013
1031	mixed	beech														-38	-51					-33		
1031	pure	beech														-22	-61					-31		
1031	mixed	pine											-30					-39						-25
1031	pure	pine											-16					-27						-26
1032	mixed	beech	-11																			-62		
1032	pure	beech	-31																			-59		
1032	mixed	pine	-37														-40							
1032	pure	pine	-35														-35							
1033	mixed	beech																						
1033	pure	beech																						
1033	mixed	pine											-22								-70			
1033	pure	pine											-30								-43			
1034	mixed	beech												-28			-36							
1034	pure	beech												-25			-18							
1034	mixed	pine	-25													-30	-35							
1034	pure	pine	-57													-34	-35							
1040	mixed	beech																						
1040	pure	beech																						
1040	mixed	pine																						
1040	pure	pine																						
1043	mixed	beech	-28																		-50	-53		
1043	pure	beech	-34																		-31	-37		
1043	mixed	pine	-16	-14					-30				-33											

1043	pure	pine	-55	-35					-24				-42										
1053	mixed	beech																					
1053	pure	beech																					
1053	mixed	pine																					
1053	pure	pine																					

Table A2.1. (continued). Radial Growth Variation during dry negative pointer years of cluster 1.1. Values in red indicate negative pointer years for which the drought happened the previous year. For brevity, only years with at least one dry pointer year are listed. Cells highlighted in yellow indicates year that are characteristic at the plot level.

Triplet	plot	species	1983	1984	1985	1986	1987	1988	1991	1992	1993	1994	1996	2000	2001	2003	2004	2006	2007	2008	2010	2011	2012	2013
1054	mixed	beech								-35	-31													
1054	pure	beech								-40	-19													
1054	mixed	pine								-23									-14					
1054	pure	pine								-33									-38					
1057	mixed	beech											-34				-15					-49	-41	
1057	pure	beech											-36				-54					-55	-25	
1057	mixed	pine											-42		-34									
1057	pure	pine											-48		-27									
1058	mixed	beech																						
1058	pure	beech																						
1058	mixed	pine																						
1058	pure	pine																						
1063	mixed	beech																						
1063	pure	beech																						
1063	mixed	pine												-52										
1063	pure	pine												-46										
1070	mixed	beech															-44							
1070	pure	beech															-25							

1070	mixed	pine	-30	-24						-32						-29		-45					-33	
1070	pure	pine	-32	-28						-40						-39		-54					-28	
1071	mixed	beech																						
1071	pure	beech																				-43		
1071	mixed	pine																					-32	-28
1071	pure	pine																					-46	-40

Table A2.2. Radial Growth Variation during dry negative pointer years for sites of cluster 1.2. Values in red indicate negative pointer years for which the drought happened the previous year. For brevity, only years with at least one dry pointer year are listed. Cells highlighted in yellow indicates year that are characteristic at the plot level.

Triplet	plot	species	1983	1984	1985	1986	1987	1988	1991	1992	1993	1994	1996	2000	2001	2003	2004	2006	2007	2008	2010	2011	2012	2013
1035	mixed	beech								-24								-32						
1035	pure	beech								-44								-26						
1035	mixed	pine	-40																					
1035	pure	pine	-55																					-26
1036	mixed	beech								-46														
1036	pure	beech								-51														
1036	mixed	pine										-24												
1036	pure	pine										-30												
1046	mixed	beech												-40										-27
1046	pure	beech												-50										-31
1046	mixed	pine	-22											-33										
1046	pure	pine	-29											-37										
1049	mixed	beech						-40																-34

1045	mixed	beech				-29			-35	
1045	pure	beech				-20			-23	
1045	mixed	pine		-22		-41			-38	-54
1045	pure	pine		-31		-18			-37	-38
1060	mixed	beech		-12		-31			-33	
1060	pure	beech		-32		-48			-32	
1060	mixed	pine								
1060	pure	pine								

Table A2.4. Radial Growth Variation during dry negative pointer years for sites of cluster 1.4. Values in red indicate negative pointer years for which the drought happened the previous year. For brevity, only years with at least one dry pointer year are listed. Cells highlighted in yellow indicates year that are characteristic at the plot level.

Triplet	plot	species	1983	1984	1985	1986	1987	1988	1991	1992	1993	1994	1996	2000	2001	2003	2004	2006	2007	2008	2010	2011	2012	2013
1055	mixed	beech																						
1055	pure	beech																						
1055	mixed	pine																-31						
1055	pure	pine																-31						
1062	mixed	beech					-19																	
1062	pure	beech					-45																	
1062	mixed	pine																						-16
1062	pure	pine																						-39

Table A2.5. Radial Growth Variation during dry negative pointer years for sites of cluster 1.5. Values in red indicate negative pointer years for which the drought happened the previous year. For brevity, only years with at least one dry pointer year are listed. Cells highlighted in yellow indicates year that are characteristic at the plot level.

Triplet	plot	species	1983	1984	1985	1986	1987	1988	1991	1992	1993	1994	1996	2000	2001	2003	2004	2006	2007	2008	2010	2011	2012	2013
1041	mixed	beech																						
1041	pure	beech																						
1041	mixed	pine								-21									-23					-34
1041	pure	pine								-35									-42					-42
1042	mixed	beech		-43											-30						-35			
1042	pure	beech		-30											-33						-42			
1042	mixed	pine		-31		-43																		
1042	pure	pine		-18		-30																		

Table A2.6. Radial Growth Variation during dry negative pointer years for sites of cluster 1.6. Values in red indicate negative pointer years for which the drought happened the previous year. For brevity, only years with at least one dry pointer year are listed. Cells highlighted in yellow indicates year that are characteristic at the plot level.

Triplet	plot	species	1983	1984	1985	1986	1987	1988	1991	1992	1993	1994	1996	2000	2001	2003	2004	2006	2007	2008	2010	2011	2012	2013
1047	mixed	beech																						
1047	pure	beech																						
1047	mixed	pine																						
1047	pure	pine																						
1056	mixed	beech																		-32			-51	-73
1056	pure	beech																		-31			-37	-55
1056	mixed	pine						-27			-11					-20							-40	-31
1056	pure	pine						-33			-35					-27							-44	-40

