



**HAL**  
open science

## Reserve lipids and plant autophagy

Céline Masclaux-daubresse, Sabine D'andrea, Isabelle Bouchez, Jean-Luc Cacas

► **To cite this version:**

Céline Masclaux-daubresse, Sabine D'andrea, Isabelle Bouchez, Jean-Luc Cacas. Reserve lipids and plant autophagy. *Journal of Experimental Botany*, 2020, 71 (10), pp.2854-2861. 10.1093/jxb/eraa082 . hal-03659044

**HAL Id: hal-03659044**

**<https://agroparistech.hal.science/hal-03659044>**

Submitted on 5 May 2022

**HAL** is a multi-disciplinary open access archive for the deposit and dissemination of scientific research documents, whether they are published or not. The documents may come from teaching and research institutions in France or abroad, or from public or private research centers.

L'archive ouverte pluridisciplinaire **HAL**, est destinée au dépôt et à la diffusion de documents scientifiques de niveau recherche, publiés ou non, émanant des établissements d'enseignement et de recherche français ou étrangers, des laboratoires publics ou privés.



Distributed under a Creative Commons Attribution 4.0 International License



## EXPERT VIEW

# Reserve lipids and plant autophagy

Céline Masclaux-Daubresse<sup>\*</sup>, Sabine d'Andrea, Isabelle Bouchez and Jean-Luc Cacas

Institut Jean-Pierre Bourgin, INRAE, AgroParisTech, Université Paris-Saclay, 78000, Versailles, France

\* Correspondence: [celine.masclaux-daubresse@inra.fr](mailto:celine.masclaux-daubresse@inra.fr)

Received 20 December 2019; Editorial decision 30 January 2020; Accepted 20 February 2020

Editor: Christine Raines, University of Essex, UK

## Abstract

**Autophagy is a universal mechanism that facilitates the degradation of unwanted cytoplasmic components in eukaryotic cells. In this review, we highlight recent developments in the investigation of the role of autophagy in lipid homeostasis in plants by comparison with algae, yeast, and animals. We consider the storage compartments that form the sources of lipids in plants, and the roles that autophagy plays in the synthesis of triacylglycerols and in the formation and maintenance of lipid droplets. We also consider the relationship between lipids and the biogenesis of autophagosomes, and the role of autophagy in the degradation of lipids in plants.**

**Keywords:** Autophagy, beta-oxidation, endoplasmic reticulum, leaf senescence, lipidomic, lipid droplet, lipids, oil body, oleosome, triacylglycerol.

## Introduction

Autophagy ('self-eating') is a universal mechanism that facilitates the degradation in eukaryotic cells of unwanted cytoplasmic components. Two distinct types, micro- and macro-autophagy, have been reported to play roles in metabolism and nutrient recycling in plants. Micro-autophagy is characterized by the invagination of the tonoplast to trap cytoplasmic material and create autophagic bodies within the vacuole. Macro-autophagy involves the formation in the cytosol of double-membrane vesicles, called autophagosomes, that sequester cytoplasmic components and carry them to the lytic vacuoles where they are released. Up to 40 autophagy genes (ATGs) are involved in the macro-autophagy machinery; 18 of them constitute the core machinery that participates in the formation of autophagosomes. By contrast with macro-autophagy, the molecular and genetic bases of micro-autophagy remain unclear. Links between macro- and micro-autophagy and plant primary and secondary metabolism have been documented in several reports. In this review, we highlight recent developments in the investigation

of the role of autophagy in lipid homeostasis in plants by comparison with algae, yeast, and animals.

## Lipid sources in plants

As in other eukaryotic cells, lipids are found in membranes but are also stored as droplets in the plant cell. Triacylglycerols (TAGs) packed in lipid droplets (LDs) represent a major form of carbon storage. Oleaginous plants such as rapeseed, soybean, sunflower, and peanut accumulate numerous LDs in their seeds. Other plants such as avocado and olive store lipids in the pericarp of their fruits. Bio-membranes consist of double layers of polar lipids that are mainly composed of glycerolipids (phospholipids and galactolipids). Membranes also contain sterols and long-chain sphingolipids (Gomez *et al.*, 2018). While galactolipids in plants are located in the membranes of chloroplasts, sphingolipids such as glycosyl inositol phosphorylceramide (GIPC) are preferentially localized

to the plasma membrane where they are highly enriched in microdomains, together with sterols (Cacas *et al.*, 2016).

LDs are formed of apolar lipids (i.e. TAGs and sterol esters) surrounded by a monolayer of phospholipids containing specific proteins. The LDs of the seeds are also referred to as oleosomes, as they are coated by a specific family of proteins called oleosins. The presence of oleosins at the surface of the seed LDs prevents the phospholipids from adjacent LDs coming into contact and fusing with them (Schmidt and Herman, 2008; Miquel *et al.*, 2014). Although LDs mainly accumulate in the embryo or endosperm of oleaginous seeds, they can also be found in the leaves, especially during senescence and under stressful conditions (Slocombe *et al.*, 2009; Pyc *et al.*, 2017; Coulon *et al.*, 2020). LDs isolated from leaves and oleaginous fruit tissues of Arabidopsis differ from those isolated from the seeds: instead of oleosins they are coated with a family of proteins called LD-associated proteins (LDAPs; also termed small rubber-particle proteins, SRPs) (Horn *et al.*, 2013; Gidda *et al.*, 2016; Brocard *et al.*, 2017; Coulon *et al.*, 2020). Interestingly, whereas the expression of oleosins is developmentally controlled and restricted to seed and pollen, the expression of LDAPs is induced in response to stress (Miquel *et al.*, 2014; Gidda *et al.*, 2016). The formation of LDs occurs at the membrane of the endoplasmic reticulum (ER) and is facilitated in leaves by the interaction between LDAP and LDAP-interacting protein (LDIP) (Pyc *et al.*, 2017; Coulon, *et al.*, 2020).

In plants, *de novo* biosynthesis of fatty acids (FAs) takes place in the chloroplast, while TAG assembly occurs at the ER. Newly synthesized FAs are exported from the plastids and eventually modified by desaturation after incorporation into phosphatidylcholine (PC) in the ER. The assembly of FAs into TAGs occurs through different pathways that take place in the ER (reviewed by Li-Beisson *et al.*, 2013). Indeed, both the diacylglycerol acyl transferase DGAT1 that is involved in the last step of the Kennedy pathway and the phospholipid:diacylglycerol transferase PDAT1 that acylates the diacylglycerol (DAG) using PC as the acyl donor reside in the ER (Kaup *et al.*, 2002; Chapman *et al.*, 2013; Brocard *et al.*, 2017). The TAGs accumulate between the two leaflets of the ER membranes to form LDs that bud from the ER and are eventually released into the cytosol.

Both membrane and storage lipids are used to fulfil the  $\beta$ -oxidation pathway and produce energy in the mitochondria of mammals, and in the peroxisomes of yeast and plants. During leaf senescence, peroxisome  $\beta$ -oxidation is enhanced (Charlton *et al.*, 2005; Yang and Ohlrogge, 2009; Watanabe *et al.*, 2013; Zhang *et al.*, 2020) and the accumulation of LDs suggests that the FAs released from the membranes are first interconverted as TAGs in droplets to prevent FA-induced toxicity before being used for  $\beta$ -oxidation (Kaup *et al.*, 2002; Lin and Oliver, 2008; Yang and Ohlrogge, 2009). The TAGs and lipid-esters can also accumulate in the chloroplasts during senescence, forming plastoglobules. These are formed from the FAs released from the degradation of the galactolipids and phytols (Lippold *et al.*, 2012). The dynamics of the formation and degradation of LDs in vegetative plant tissues are yet to be determined.

## Does autophagy play a role in TAG synthesis and in the formation and maintenance of LDs in cells?

Whether or not autophagy is involved in the formation and/or maintenance of LDs has been questioned (see Elander *et al.*, 2018, for a review). TAGs are less abundant and LDs are smaller in the cells of the *atg8* yeast mutant compared to the wild-type at the stationary phase (Maeda *et al.*, 2017); conversely, higher levels of TAGs and larger LDs are found in *Atg8* overexpressors. This led the authors to propose that a specific function of Atg8 in yeast may be to maintain the quantity of LDs; however, this was probably independent of the function of Atg8 in autophagy.

Nitrogen and phosphate starvation are known to enhance the formation of LDs in *Chlamydomonas reinhardtii*. Treatment with concanamycin A, which inhibits the degradation of cargoes in the vacuole, prevents the formation of LDs and the synthesis of TAGs in nitrogen- and phosphate-limited cells (Couso *et al.*, 2018). This suggests that autophagy plays a role in the biogenesis of TAGs and LDs in *C. reinhardtii*.

In mammals, the differentiation of adipocytes correlates with the enhancement of autophagic flux. Conversely, mutations in the autophagy pathway abolish the accumulation of TAGs and impair adipocyte formation (Baerga *et al.*, 2009; Zhang *et al.*, 2009). Providing oleate to mammalian cells induces the formation of LDs, and in turn increases autophagic flux. In the absence of a build-up of LDs, autophagy still occurs in mammalian cells but at a lower rate. Transient interactions between LDs and LC3 (the ATG8 homologue in mammals) have been demonstrated (Singh *et al.*, 2009; Shibata *et al.*, 2009; Dupont *et al.*, 2014a, 2014b). DGAT1 resident in the ER has been shown to selectively channel the FAs liberated by autophagy into new LDs that cluster in close proximity to mitochondria (Nguyen *et al.*, 2017; Nguyen and Olzmann, 2017).

In rice, the *OsATG7*-knockout mutant *osatg7*, which is defective in autophagy, displays male sterility and lower contents of TAGs and LDs in mature anthers compared to the wild-type (Kurusu *et al.*, 2014). Defects in phosphatidylcholine synthesis and lipid desaturation during pollen maturation may explain the male-sterility phenotype of *osatg7*. Fan *et al.* (2019) showed that TAGs levels are lower in the leaves of the Arabidopsis *atg2* and *atg5* mutants compared with the wild-type. Using  $^{14}\text{C}$ -acetate and  $^3\text{H}_2\text{O}$  short-term labelling, they demonstrated that the decrease of TAG synthesis in the autophagy mutants was not due to a decrease in the rate of neo-synthesis of FAs but was instead due to a decrease in the turnover of membrane lipids. Minina *et al.* (2018) showed that the concentrations of FAs in the seeds of the Arabidopsis *atg7* and *atg5* mutants are not different from those of the wild-type; however, overexpression of *ATG5* or *ATG7* under the control of the 35S promoter increases the concentration of FAs, probably due to better allocation of resources.

Taken together, these studies indicate a link between autophagy and lipid metabolism in yeast, algae, animals, and plants.

**Table 1.** Roles of lipophagy and lipolysis in the degradation lipid droplets in yeast, algae, animals, and plants

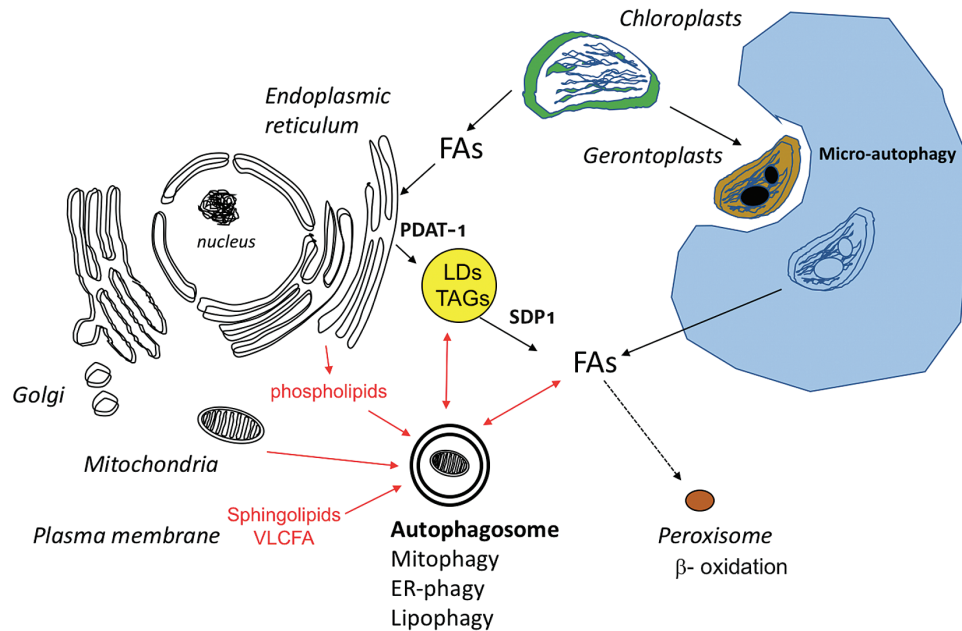
Organism/model	Mechanism involved in lipid degradation	System/growth conditions	References
<i>Puccinia distincta</i>	Micro-autophagy	Ageing of aeciospores	Weber and Davoli (2002)
<i>Saccharomyces cerevisiae</i>	ATG-dependent micro-autophagy	Stationary phase	van Zutphen <i>et al.</i> (2014); Wang <i>et al.</i> (2014)
<i>Auxenochlorella protothecoides</i>	Micro-autophagy	Hetero- to auto-trophy	Zhao <i>et al.</i> (2014)
<i>Micrasterias denticulata</i>	Macro-autophagy	Carbon starvation	Schwarz <i>et al.</i> (2017)
<i>Chlamydomonas reinhardtii</i>	ATG8- and ATG3-dependent macro-autophagy	Nitrogen starvation	Kajikawa <i>et al.</i> (2019)
<i>Drosophila</i> larval adipose tissue	ATG8- and Rab32-dependent macro-autophagy	Starvation	Wang <i>et al.</i> (2012)
Hepathocyte cells	GTPase dynamin 2 orchestrates autophagy-mediated breakdown of LDs	Starvation	Schulze <i>et al.</i> (2013)
Mouse intestinal epithelium	LC3-dependent macro-autophagy	Force-fed with olive oil	Khaloudoun <i>et al.</i> (2014)
Mouse fibroblasts	Chaperone-mediated autophagy of the LD-associated PLIN2 and PLIN3	Starvation	Kaushik and Cuervo (2015)
Mouse embryonic fibroblasts	Lipolysis by ATGL. Macro-autophagy supplies FAs from membranes	Starvation	Rambold <i>et al.</i> (2015)
Hepathocytes	Rab7-dependent lipophagy. Macro-autophagy	Starvation	Schroeder <i>et al.</i> (2015); Schulze <i>et al.</i> (2017)
Rat hypothalamus neurons, and brown fat tissues and liver	ATGL contains a LC3-interacting region; mutating the LIR motif of ATGL displaces ATGL from LDs and disrupts lipolysis	Cold exposure of <i>atg7</i> mutants	Martinez-Lopez <i>et al.</i> (2016)
Mouse adipocytes	HSL/ATGL-independent lipolysis. LDs are captured by endo-lysosomal vesicles	Mitochondrial uncoupling drugs	Demine <i>et al.</i> (2018)
Hepatocytes of mouse	Down-regulation of PLIN2 stimulates TAG catabolism via autophagy.	<i>plin2</i> <sup>-/-</sup> and PLIN2 over-expressor	Tsai <i>et al.</i> (2017)
Tapetum cells of rice	OsATG7-dependent macro-autophagy	Post-meiotic anthers	Kurusu <i>et al.</i> (2014)
Arabidopsis seeds	Peroxisome extensions deliver SDP1 lipase to LDs	Seeds	Thazar-Poulot <i>et al.</i> (2015)
Arabidopsis seedlings	TAGs and FAs accumulate in <i>atg5</i> and <i>atg7</i>	6-d-old seedlings in the dark	Avin-Wittenberg <i>et al.</i> (2015)
Arabidopsis leaves	Lipolysis by SUGARDEPENDENT1	Extended darkness	Fan <i>et al.</i> (2017)
Maize leaves	Disruption of <i>ZmATG12</i> affects products of lipid turnover and secondary metabolites	Nitrogen starvation	McLoughlin <i>et al.</i> (2018)
Arabidopsis leaves	Macro-autophagy is involved in recycling phospholipids and sphingolipids of the endoplasmic reticulum and plasma membranes	<i>atg5</i> and <i>atg5.sid2</i> proteomics and lipidomics with or without S and N limitation	Havé <i>et al.</i> (2019)
Arabidopsis leaves	Disruption of autophagy slows down membrane lipid turnover in mature and senescing leaves, and FA neo-synthesis in growing leaves. Oleosine1 degradation in the vacuole is impaired in <i>atg5</i> mutants. TAGs accumulate in <i>sdp1</i> mutants under starvation when autophagy is impaired.	<sup>14</sup> C-acetate labelling and chase in <i>atg2</i> and <i>atg5</i> mutants combined with <i>sdp1</i> lipase mutation or genotypes over-accumulating TAGs	Fan <i>et al.</i> (2019)

ATG, autophagy core machinery; ATGL, adipose triglyceride lipase; FAs, fatty acids; LDs, lipid droplets; PLIN2/3, perilipin 2/3 proteins; SDP1, SUGARDEPENDENT1 lipase; TAGs, triacylglycerols.

## Lipids in the biogenesis of autophagosomes

It has long been known that the formation of autophagosomes requires the recruitment of lipids to the pre-autophagosomal structure and this is mediated by the ATG9 transmembrane protein (Orsi *et al.*, 2012; Yamamoto *et al.*, 2012). Recently, Zhuang *et al.* (2017) have shown that ATG9 deficiency in Arabidopsis leads to a drastic accumulation of autophagosome-related tubular structures in direct membrane continuity with the ER. This demonstrates that ATG9 is essential in regulating autophagosome formation from the ER membrane in Arabidopsis, as is the case in animals and yeast.

Although the ER membrane is assumed to be the origin of lipids for autophagosome biogenesis, several lines of evidence show that LDs may also be a source. Shpilka *et al.* (2015) showed in yeast that LDs can provide lipid precursors and phospholipids to the growing autophagosomes, with lipid exchanges occurring at the LD-ER and ER-autophagosome contact sites and *via* interactions between the LDs and the autophagosomes. In mammals, *TMEM41B*-knockout cells accumulate LDs and are autophagy defective (Moretti *et al.*, 2018). *TMEM41B* is located at the ER membrane and is probably essential for lipid exchanges between the LDs and the pre-autophagosomal membranes. A recent study has shown that autophagosome membranes do not only derive from preformed membranes



**Fig. 1.** Schematic representation of the potential roles of autophagy in lipid degradation in Arabidopsis leaves. According to Fan *et al.* (2019) and Havé *et al.* (2019), autophagy may be involved in the recycling of lipids that originate from the plasma membrane and the endomembrane of several organelles, except for those of chloroplasts. While the stroma material of the chloroplasts is degraded through the macro-autophagy pathway, chlorophagy occurs through the micro-autophagy pathway (Izumi *et al.*, 2019). Red arrows indicate autophagy-dependent lipid degradation pathways: double-headed arrows indicate that autophagy may be involved in both the degradation and replenishment of lipid droplets and fatty acids. LDs, lipid droplets; TAGs, triacylglycerols; FAs, fatty acids; SDP1, SUGARDEPENDENT1 triacylglycerol lipase; PDAT-1, phospholipid:diacylglycerol transferase, VLCFA, very-long-chain fatty acid; ER, endoplasmic reticulum.

of organelles or from LDs. Schütter *et al.*, (2020) found that localized phospholipid synthesis controls the expansion of the phagophore membrane in yeast. The acyl-CoA synthetase Faa1, which accumulates locally on nucleated phagophores, activates FAs into the synthesis of phospholipids and promotes their assembly into autophagic membranes. Studies of mutants and the use of specific inhibitors showed that Faa1 is critical for autophagy in yeast. However, it remains to be determined whether the neo-synthesis of phospholipids that is activated by Faa1 is localized at the ER-phagophore contact sites and whether the ATG2-ATG18 complex is involved in the transfer of these phospholipids to expanding phagophores, as for example in mammals (Maeda *et al.*, 2019).

## Autophagy and lipid degradation in plants

Lipid degradation involving autophagy is referred as lipophagy, and lipid degradation by lipases in the cytosol is referred as lipolysis. Lipophagy can occur by both macro- and micro-autophagy. In algae and yeast both macro- and micro-lipophagy have been observed (Weber and Davoli, 2002; van Zutphen *et al.*, 2014; Wang *et al.*, 2014; Zhao *et al.*, 2014; Schwarz *et al.*, 2017; Kajikawa *et al.*, 2019). In yeast, lipophagy by direct engulfment of LDs into the central vacuole has been reported (Table 1). This micro-autophagy process requires the integrity of most of the proteins of the core macro-autophagy machinery. In animals, the degradation of LDs is mainly achieved by the macro-autophagy machinery. However, there are several lines of evidence that chaperone-mediated autophagy

and lipolysis by adipose triglyceride lipase (ATGL) also play a role (Wang *et al.*, 2012; Schulze *et al.*, 2013, 2017; Khaldoun *et al.*, 2014; Kaushik and Cuervo, 2015; Rambold *et al.*, 2015; Schroeder *et al.*, 2015; Martinez-Lopez *et al.*, 2016; Tsai *et al.*, 2017; Demine *et al.*, 2018). In plants, very little is known about the degradation of LDs except that SUGARDEPENDENT1 (SDP1) triacylglycerol lipase is involved in their lipolysis in dark-treated leaves and also in the degradation of seed LDs post-germination (Thazar-Poulot *et al.*, 2015; Fan *et al.*, 2017). Recently, Fan *et al.* (2019) used  $^{14}\text{C}$ -acetate labelling and performed chase experiments on Arabidopsis mutants deficient in autophagy and on mutants known to enhance TAG synthesis through the ER or chloroplast pathways. The  $^{14}\text{C}$  labelling in TAGs showed that autophagy participates in the neo-synthesis of FAs in young, growing leaves, and also in the turnover of lipids of the endomembranes in mature and senescing leaves. The authors demonstrated that inactivating autophagy inhibits the mobilization of FAs from the membranes for TAG synthesis. They did this by combining mutations in *ATG5* and *ATG2* first with constructs overexpressing phospholipid:diacylglycerol acyltransferase (PDAT1) and OLEOSIN-1, which enhance formation and accumulation of LDs, second with a mutation in trigalactosyldiacylglycerol1 (*tgdl*), which impairs the ER lipid pathway and enhances the chloroplast pathway for TAG synthesis, third with a mutation in *SDP1*, and fourth with a mutation in the plastid trigalactosyldiacylglycerol1 (*act1*), which controls chloroplast FA synthesis. However, using dark treatments, they showed that autophagy has no impact on the synthesis of FAs in the chloroplast and that the recycling of the thylakoid membranes is not



modified in the autophagy mutants. Their electron micrographs suggested that the lipophagy of LDs occurs in a resembling micro-lipophagy that requires the macro-autophagy core machinery. [Fan \*et al.\* \(2019\)](#) concluded that macro-autophagy is involved in the degradation of lipids originating from the endomembranes of various organelles, except for those of the chloroplasts. Interestingly, their results were in good agreement with proteomic and lipidomic studies performed by [Havé \*et al.\* \(2019\)](#), who used comparisons of the proteomes of *Arabidopsis atg5* and *atg5/sid2* mutants with the Col-0 wild-type and the *sid2* mutant to show that defects in autophagy triggered stress in the ER and increased the abundance of enzymes involved in lipid metabolism in the ER and peroxisomes, irrespective of nitrate or sulphate availability. Enzymes involved in the elongation of very-long-chain FAs together with the PDAT1 protein were more abundant in *atg5* and *atg5/sid2* than in the control lines. Enzymes involved in the peroxisome  $\beta$ -oxidation

pathway were also more abundant while chloroplast enzymes involved in FA synthesis were less abundant. In parallel with a decrease of chloroplast proteins in the *atg5* mutants, a decrease of galactolipids was also observed. These decreases were more severe under conditions of nitrate and sulphate limitation than under control nutrition, showing that chloroplasts were degraded in the *atg5* lines independently of autophagy when the plants were starved. Many proteases including SAG12 and AED1 are strongly increased in the *atg5* mutant, suggesting that alternative pathways are involved in the degradation of chloroplasts when autophagy is defective ([Guiboileau \*et al.\*, 2013](#); [Havé \*et al.\*, 2018](#)). By contrast with galactolipids, the *atg5* mutants exhibit accumulation of phospholipids (mainly phosphatidylcholine, phosphatidylinositol, and phosphatidic acid) and sphingolipids (long-chain ceramides and hydroxyceramides, and GIPC) compared with control lines. This therefore suggests that the turnover of lipids originating from the ER and

### Box 1. Key developments in understanding the function of plant autophagy in the control of lipid homeostasis

- **Disruption of basal macro-autophagy impedes lipid turnover and mobilization in the membranes of organelles, and the lipophagy that results in degradation of lipid droplets under carbon stress morphologically resembles yeast micro-autophagy**

[Fan \*et al.\*, \(2019\)](#) demonstrated that macro-autophagy in *Arabidopsis* contributes to triacylglycerol synthesis in young leaves, and to lipid turnover from the membranes of organelles in mature and senescing leaves. Lipophagy that is induced in the leaves of *Arabidopsis* by extended darkness degrades lipid droplets in a process that morphologically resembles yeast micro-autophagy; however, it requires the core components of the macro-autophagy machinery.

- **Lipidomic and proteomic studies of *Arabidopsis atg5* mutants suggest a role of macro-autophagy in the turnover of the plasma membrane, and of the membranes of other organelles except for chloroplasts**

[Havé \*et al.\*, \(2019\)](#) showed that defects in autophagy trigger ER-stress and increase the abundance of enzymes involved in the metabolism of very-long-chain lipids in the ER and in  $\beta$ -oxidation in peroxisomes. *atg5* mutants exhibit an accumulation of phospholipids and sphingolipids and a decrease of galactolipids compared with the wild-type. This shows that the turnover of lipids originating from the ER and plasma membrane is impaired in the autophagy mutants, while chloroplast and thylakoid membranes may be degraded independently of autophagy.

- **Lipidomic and proteomic studies of maize *atg12* mutants suggest that they have modifications in lipid homeostasis**

Multi-omic analyses performed by [McLoughlin \*et al.\* \(2018\)](#) on the leaves of maize autophagy mutants after nitrogen starvation indicated changes in lipids and secondary metabolites that were consistent with results found in *Arabidopsis* autophagy mutants ([Masclaux-Daubresse \*et al.\*, 2014](#); [Havé \*et al.\*, 2019](#)).

- **Degradation of ubiquitinated oleosins requires the PUX10-CDC48A protein and is a prerequisite to the degradation of lipid droplets in *Arabidopsis* seeds**

The degradation of oleosins is a prerequisite for the post-germination mobilization of the lipids stored in seed lipid droplets (LDs). [Deruyffelaere \*et al.\* \(2018\)](#) reported that *Arabidopsis* PUX10 is associated with a subpopulation of LDs during seed germination and is involved in the degradation of ubiquitinated oleosins. PUX10 interacts with ubiquitin and with CDC48A through its UBA and UBX domains, respectively. PUX10 may act as an adaptor that recruits CDC48A to ubiquitinated oleosins, thereby facilitating the dislocation of oleosins from the LDs before their degradation by the proteasome, or by other pathways that remain to be determined.

plasma membranes is impaired in autophagy mutants. The studies of [Fan \*et al.\* \(2019\)](#) and [Havé \*et al.\* \(2019\)](#) consequently both raise the same conclusion that the autophagy pathway is involved in the turnover of the lipids originating from the plasma membrane and organelles, but not from the chloroplasts ([Fig. 1](#)).

The role of autophagy in the mobilization of the TAGs stored in the LDs during the post-germinative phase has not yet been documented. The SDP1 lipase that is associated with the seed LDs is involved in the process of germination ([Eastmond, 2006](#)). It is likely that the degradation of the oleosins that coat the LDs is a prerequisite for the mobilization of TAGs ([Deruyffelaere \*et al.\*, 2015](#)). It has been shown that oleosins are marked for degradation by ubiquitination during seed germination. Surprisingly, three distinct and exclusive motifs of ubiquitination can be discerned, namely mono-ubiquitin, a K48-linked di-ubiquitin chain, and a K63-linked di-ubiquitin chain, suggesting oleosins may be degraded by both the proteasome and autophagy. Indeed, the ubiquitin-proteasome pathway has been shown to degrade oleosins modified by the addition of a K48-linked di-ubiquitin chain ([Deruyffelaere \*et al.\*, 2015](#)). Proteomic analyses of the LDs of *Arabidopsis* seeds have revealed that plant UBX-domain containing protein family 10 (PUX10) and cell division cycle 48 homolog A (CDC48A) may be involved in oleosin degradation. [Deruyffelaere \*et al.\* \(2018\)](#) showed that PUX10 deficiency impairs the degradation of ubiquitinated oleosins and prevents their dislocation from LDs, which precedes the proteasomal degradation of ubiquitinated oleosins. Two studies have independently reported that PUX10 is an integral protein of LDs that recruits CDC48A to the LDs, which suggests that the PUX10–CDC48A interaction may facilitate the dislocation of oleosins from the LDs by the segregase activity of CDC48A ([Deruyffelaere \*et al.\*, 2018](#); [Kretzschmar \*et al.\*, 2018](#)). Recently, [Marshall \*et al.\* \(2019\)](#) have described a new class of ATG8-interactors that exploit ubiquitin-interacting motif (UIM)-like sequences for high-affinity binding to ATG8. Interestingly, they found that several PUX proteins (PUX7, PUX8, PUX9, and PUX13) interact with ATG8 using UIM motifs and also interact with CDC48. They also showed that the oleosin OLE1 interacts with ATG8 via an AIM/LIR motif. They consequently proposed that the ATG8-interacting PUX proteins are selective autophagy receptors for CDC48. It remains to be determined whether ATG8 can interact with PUX10 and CDC48A for the degradation of oleosins and LDs by autophagy.

## Conclusions

Interdependent relationships between autophagy and lipid homeostasis are supported by many studies in yeast, algae, and animals. Much less is known about the situation in plants, although some recent advances (see [Box 1](#)) suggest a role of autophagy in the degradations of the lipids of the membranes and of LDs ([Fig. 1](#)). Further research is required to determine whether and how lipid biosynthesis and LDs play a role in the control of autophagosome formation and in autophagy in plants.

## Acknowledgements

The Institut Jean-Pierre Bourgin benefits from the financial support of Saclay Plant Sciences-SPS (ANR-17-EUR-0007).

## References

- Avin-Wittenberg T, Bajdzienko K, Wittenberg G, Alseikh S, Tohge T, Bock R, Giavalisco P, Fernie AR.** 2015. Global analysis of the role of autophagy in cellular metabolism and energy homeostasis in *Arabidopsis* seedlings under carbon starvation. *The Plant Cell* **27**, 306–322.
- Baerga R, Zhang Y, Chen PH, Goldman S, Jin S.** 2009. Targeted deletion of *autophagy-related 5 (atg5)* impairs adipogenesis in a cellular model and in mice. *Autophagy* **5**, 1118–1130.
- Brocard L, Immel F, Coulon D, Esnay N, Tophile K, Pascal S, Claverol S, Fouillen L, Bessoule JJ, Bréhélin C.** 2017. Proteomic analysis of lipid droplets from *Arabidopsis* aging leaves brings new insight into their biogenesis and functions. *Frontiers in Plant Science* **8**, 894.
- Cacas JL, Buré C, Grosjean K, *et al.*** 2016. Revisiting plant plasma membrane lipids in tobacco: a focus on sphingolipids. *Plant Physiology* **170**, 367–384.
- Chapman KD, Dyer JM, Mullen RT.** 2013. Commentary: why don't plant leaves get fat? *Plant Science* **207**, 128–134.
- Charlton WL, Johnson B, Graham IA, Baker A.** 2005. Non-coordinate expression of peroxisome biogenesis, beta-oxidation and glyoxylate cycle genes in mature *Arabidopsis* plants. *Plant Cell Reports* **23**, 647–653.
- Coulon D, Brocard L, Tophile K, Bréhélin C.** 2020. *Arabidopsis* LDIP protein locates at a confined area within the lipid droplet surface and favors lipid droplet formation. *Biochimie* **169**, 20–49.
- Couso I, Pérez-Pérez ME, Martínez-Force E, Kim HS, He Y, Umen JG, Crespo JL.** 2018. Autophagic flux is required for the synthesis of triacylglycerols and ribosomal protein turnover in *Chlamydomonas*. *Journal of Experimental Botany* **69**, 1355–1367.
- Demine S, Tejerina S, Bihin B, Thiry M, Reddy N, Renard P, Raes M, Jadot M, Arnould T.** 2018. Mild mitochondrial uncoupling induces HSL/ATGL-independent lipolysis relying on a form of autophagy in 3T3-L1 adipocytes. *Journal of Cellular Physiology* **233**, 1247–1265.
- Deruyffelaere C, Bouchez I, Morin H, Guillot A, Miquel M, Froissard M, Chardot T, D'Andrea S.** 2015. Ubiquitin-mediated proteasomal degradation of oleosins is involved in oil body mobilization during post-germinative seedling growth in *Arabidopsis*. *Plant & Cell Physiology* **56**, 1374–1387.
- Deruyffelaere C, Purkrtova Z, Bouchez I, Collet B, Cacas JL, Chardot T, Gallois JL, D'Andrea S.** 2018. PUX10 is a CDC48A adaptor protein that regulates the extraction of ubiquitinated oleosins from seed lipid droplets in *Arabidopsis*. *The Plant Cell* **30**, 2116–2136.
- Dupont N, Chauhan S, Arko-Mensah J, Castillo EF, Masedunskas A, Weigert R, Robenek H, Proikas-Cezanne T, Deretic V.** 2014a. Neutral lipid stores and lipase PNPLA5 contribute to autophagosome biogenesis. *Current Biology* **24**, 609–620.
- Dupont N, Orhon I, Bauvy C, Codogno P.** 2014b. Autophagy and autophagic flux in tumor cells. In: Galluzzi L, Kroemer G, eds, *Cell-wide metabolic alterations associated with malignancy*. *Methods in enzymology*, vol. 543. Cambridge, MA: Academic Press, 73–88.
- Eastmond PJ.** 2006. *SUGAR-DEPENDENT1* encodes a patatin domain triacylglycerol lipase that initiates storage oil breakdown in germinating *Arabidopsis* seeds. *The Plant Cell* **18**, 665–675.
- Elander PH, Minina EA, Bozhkov PV.** 2018. Autophagy in turnover of lipid stores: trans-kingdom comparison. *Journal of Experimental Botany* **69**, 1301–1311.
- Fan J, Yu L, Xu C.** 2017. A central role for triacylglycerol in membrane lipid breakdown, fatty acid  $\beta$ -oxidation, and plant survival under extended darkness. *Plant Physiology* **174**, 1517–1530.
- Fan J, Yu L, Xu CG.** 2019. Dual role of autophagy in lipid metabolism in *Arabidopsis*. *The Plant Cell* **31**, 1598–1613.
- Gidda SK, Park S, Pyc M, Yurchenko O, Cai Y, Wu P, Andrews DW, Chapman KD, Dyer JM, Mullen RT.** 2016. Lipid droplet-associated proteins (LDAPs) are required for the dynamic regulation of neutral lipid compartmentation in plant cells. *Plant Physiology* **170**, 2052–2071.

- Gomez RE, Joubes J, Valentin N, Batoko H, Satiat-Jeunemaitre B, Bernard A.** 2018. Lipids in membrane dynamics during autophagy in plants. *Journal of Experimental Botany* **69**, 1287–1299.
- Guiboileau A, Avila-Ospina L, Yoshimoto K, Soulay F, Azzopardi M, Marmagne A, Lothier J, Masclaux-Daubresse C.** 2013. Physiological and metabolic consequences of autophagy deficiency for the management of nitrogen and protein resources in Arabidopsis leaves depending on nitrate availability. *New Phytologist* **199**, 683–694.
- Havé M, Balliau T, Cottyn-Boitte B, et al.** 2018. Increases in activity of proteasome and papain-like cysteine protease in Arabidopsis autophagy mutants: back-up compensatory effect or cell-death promoting effect? *Journal of Experimental Botany* **69**, 1369–1385.
- Havé M, Luo J, Tellier F, Balliau T, Cueff G, Chardon F, Zivy M, Rajjou L, Cacas JL, Masclaux-Daubresse C.** 2019. Proteomic and lipidomic analyses of the Arabidopsis *atg5* autophagy mutant reveal major changes in endoplasmic reticulum and peroxisome metabolisms and in lipid composition. *New Phytologist* **223**, 1461–1477.
- Horn PJ, James CN, Gidda SK, Kilaru A, Dyer JM, Mullen RT, Ohlrogge JB, Chapman KD.** 2013. Identification of a new class of lipid droplet-associated proteins in plants. *Plant Physiology* **162**, 1926–1936.
- Izumi N, Nakamura S, Li N.** 2019. Autophagic turnover of chloroplasts: its roles and regulatory mechanisms in response to sugar starvation. *Frontiers in Plant Science* **10**, 280.
- Kajikawa M, Yamauchi M, Shinkawa H, Tanaka M, Hatano K, Nishimura Y, Kato M, Fukuzawa H.** 2019. Isolation and characterization of *Chlamydomonas* autophagy-related mutants in nutrient-deficient conditions. *Plant & Cell Physiology* **60**, 126–138.
- Kaup MT, Froese CD, Thompson JE.** 2002. A role for diacylglycerol acyltransferase during leaf senescence. *Plant Physiology* **129**, 1616–1626.
- Kaushik S, Cuervo AM.** 2015. Degradation of lipid droplet-associated proteins by chaperone-mediated autophagy facilitates lipolysis. *Nature Cell Biology* **17**, 759–770.
- Khalidoun SA, Emond-Boisjoly MA, Chateau D, Carrière V, Lacasa M, Rousset M, Demignot S, Morel E.** 2014. Autophagosomes contribute to intracellular lipid distribution in enterocytes. *Molecular Biology of the Cell* **25**, 118–132.
- Kretzschmar FK, Mengel LA, Müller AO, Schmitt K, Bliersch KF, Valerius O, Braus GH, Ischebeck T.** 2018. PUX10 is a lipid droplet-localized scaffold protein that interacts with CELL DIVISION CYCLE48 and is involved in the degradation of lipid droplet proteins. *The Plant Cell* **30**, 2137–2160.
- Kurusu T, Koyano T, Hanamata S, et al.** 2014. OsATG7 is required for autophagy-dependent lipid metabolism in rice postmeiotic anther development. *Autophagy* **10**, 878–888.
- Li-Beisson Y, Shorrosh B, Beisson F, et al.** 2013. Acyl-lipid metabolism. *The Arabidopsis Book* **11**, e0161.
- Lin WL, Oliver DJ.** 2008. Role of triacylglycerols in leaves. *Plant Science* **175**, 233–237.
- Lippold F, vom Dorp K, Abraham M, et al.** 2012. Fatty acid phytol ester synthesis in chloroplasts of Arabidopsis. *The Plant Cell* **24**, 2001–2014.
- Maeda S, Otomo C, Otomo T.** 2019. The autophagic membrane tether ATG2A transfers lipids between membranes. *eLIFE* **8**, e45777.
- Maeda Y, Oku M, Sakai Y.** 2017. Autophagy-independent function of Atg8 in lipid droplet dynamics in yeast. *Journal of Biochemistry* **161**, 339–348.
- Marshall RS, Hua Z, Mali S, McLoughlin F, Vierstra RD.** 2019. ATG8-binding UIM proteins define a new class of autophagy adaptors and receptors. *Cell* **177**, 766–781.e24.
- Martinez-Lopez N, Garcia-Macia M, Sahu S, Athonvarangkul D, Liebling E, Merlo P, Cecconi F, Schwartz GJ, Singh R.** 2016. Autophagy in the CNS and periphery coordinate lipophagy and lipolysis in the brown adipose tissue and liver. *Cell Metabolism* **23**, 113–127.
- Masclaux-Daubresse C, Clément G, Anne P, Routaboul J, Guiboileau A, Soulay F, Shirasu K, Yoshimoto K.** 2014. Stitching together the multiple dimensions of autophagy using metabolomic and transcriptomic analyses reveals new impacts of autophagy defects on metabolism, development and plant response to environment. *The Plant Cell* **26**, 1857–1877.
- McLoughlin F, Augustine RC, Marshall RS, Li F, Kirkpatrick LD, Otegui MS, Vierstra RD.** 2018. Maize multi-omics reveal roles for autophagic recycling in proteome remodelling and lipid turnover. *Nature Plants* **4**, 1056–1070.
- Minina EA, Moschou PN, Vetukuri RR, et al.** 2018. Transcriptional stimulation of rate-limiting components of the autophagic pathway improves plant fitness. *Journal of Experimental Botany* **69**, 1415–1432.
- Miquel M, Trigui G, d'Andréa S, Kelemen Z, Baud S, Berger A, Deruyffelaere C, Trubuil A, Lepiniec L, Dubreucq B.** 2014. Specialization of oleosins in oil body dynamics during seed development in Arabidopsis seeds. *Plant Physiology* **164**, 1866–1878.
- Moretti F, Bergman P, Dodgson S, et al.** 2018. TMEM41B is a novel regulator of autophagy and lipid mobilization. *EMBO Reports* **19**, e45889.
- Nguyen TB, Louie SM, Daniele JR, Tran Q, Dillin A, Zoncu R, Nomura DK, Olzmann JA.** 2017. DGAT1-dependent lipid droplet biogenesis protects mitochondrial function during starvation-induced autophagy. *Developmental Cell* **42**, 9–21.e5.
- Nguyen TB, Olzmann JA.** 2017. Lipid droplets and lipotoxicity during autophagy. *Autophagy* **13**, 2002–2003.
- Orsi A, Razi M, Dooley HC, Robinson D, Weston AE, Collinson LM, Tooze SA.** 2012. Dynamic and transient interactions of Atg9 with autophagosomes, but not membrane integration, are required for autophagy. *Molecular Biology of the Cell* **23**, 1860–1873.
- Pyc M, Cai Y, Gidda SK, et al.** 2017. Arabidopsis lipid droplet-associated protein (LDAP) – interacting protein (LDIP) influences lipid droplet size and neutral lipid homeostasis in both leaves and seeds. *The Plant Journal* **92**, 1182–1201.
- Rambold AS, Cohen S, Lippincott-Schwartz J.** 2015. Fatty acid trafficking in starved cells: regulation by lipid droplet lipolysis, autophagy, and mitochondrial fusion dynamics. *Developmental Cell* **32**, 678–692.
- Schmidt MA, Herman EM.** 2008. Suppression of soybean oleosin produces micro-oil bodies that aggregate into oil body/ER complexes. *Molecular Plant* **1**, 910–924.
- Schroeder B, Schulze RJ, Weller SG, Sletten AC, Casey CA, McNiven MA.** 2015. The small GTPase Rab7 as a central regulator of hepatocellular lipophagy. *Hepatology* **61**, 1896–1907.
- Schulze RJ, Rasineni K, Weller SG, Schott MB, Schroeder B, Casey CA, McNiven MA.** 2017. Ethanol exposure inhibits hepatocyte lipophagy by inactivating the small guanosine triphosphatase Rab7. *Hepatology Communications* **1**, 140–152.
- Schulze RJ, Weller SG, Schroeder B, Krueger EW, Chi S, Casey CA, McNiven MA.** 2013. Lipid droplet breakdown requires dynamin 2 for vesiculation of autolysosomal tubules in hepatocytes. *The Journal of Cell Biology* **203**, 315–326.
- Schütter M, Giavalisco P, Brodesser S, Graef M.** 2020. Local fatty acid channelling into phospholipid synthesis drives phagophore expansion during autophagy. *Cell* **180**, 135–149.e14.
- Schwarz V, Andosch A, Geretschläger A, Affenzeller M, Lütz-Meindl U.** 2017. Carbon starvation induces lipid degradation via autophagy in the model alga *Micrasterias*. *Journal of Plant Physiology* **208**, 115–127.
- Shibata M, Yoshimura K, Furuya N, Koike M, Ueno T, Komatsu M, Arai H, Tanaka K, Kominami E, Uchiyama Y.** 2009. The MAP1-LC3 conjugation system is involved in lipid droplet formation. *Biochemical and Biophysical Research Communications* **382**, 419–423.
- Shpilka T, Welter E, Borovsky N, Amar N, Mari M, Reggiori F, Elazar Z.** 2015. Lipid droplets and their component triglycerides and steryl esters regulate autophagosome biogenesis. *The EMBO Journal* **34**, 2117–2131.
- Singh R, Kaushik S, Wang Y, Xiang Y, Novak I, Komatsu M, Tanaka K, Cuervo AM, Czaja MJ.** 2009. Autophagy regulates lipid metabolism. *Nature* **458**, 1131–1135.
- Slocombe SP, Cornah J, Pinfield-Wells H, Soady K, Zhang Q, Gilday A, Dyer JM, Graham IA.** 2009. Oil accumulation in leaves directed by modification of fatty acid breakdown and lipid synthesis pathways. *Plant Biotechnology Journal* **7**, 694–703.
- Thazar-Poulot N, Miquel M, Fobis-Loisy I, Gaude T.** 2015. Peroxisome extensions deliver the Arabidopsis SDP1 lipase to oil bodies. *Proceedings of the National Academy of Sciences, USA* **112**, 4158–4163.
- Tsai TH, Chen E, Li L, Saha P, Lee HJ, Huang LS, Shelness GS, Chan L, Chang BH.** 2017. The constitutive lipid droplet protein PLIN2 regulates autophagy in liver. *Autophagy* **13**, 1130–1144.



- van Zutphen T, Todde V, de Boer R, Kreim M, Hofbauer HF, Wolinski H, Veenhuis M, van der Klei IJ, Kohlwein SD. 2014. Lipid droplet autophagy in the yeast *Saccharomyces cerevisiae*. *Molecular Biology of the Cell* **25**, 290–301.
- Wang C, Liu Z, Huang X. 2012. Rab32 is important for autophagy and lipid storage in *Drosophila*. *PLoS ONE* **7**, e32086.
- Wang CW, Miao YH, Chang YS. 2014. A sterol-enriched vacuolar microdomain mediates stationary phase lipophagy in budding yeast. *The Journal of Cell Biology* **206**, 357–366.
- Watanabe M, Balazadeh S, Tohge T, Erban A, Giavalisco P, Kopka J, Mueller-Roeber B, Fernie AR, Hoefgen R. 2013. Comprehensive dissection of spatiotemporal metabolic shifts in primary, secondary, and lipid metabolism during developmental senescence in Arabidopsis. *Plant Physiology* **162**, 1290–1310.
- Weber RWS, Davoli P. 2002. Autophagocytosis of carotenoid-rich lipid droplets into vacuoles during aeciospore ageing in *Puccinia distincta*. *New Phytologist* **154**, 471–479.
- Yamamoto H, Kakuta S, Watanabe TM, Kitamura A, Sekito T, Kondo-Kakuta C, Ichikawa R, Kinjo M, Ohsumi Y. 2012. Atg9 vesicles are an important membrane source during early steps of autophagosome formation. *The Journal of Cell Biology* **198**, 219–233.
- Yang Z, Ohlrogge JB. 2009. Turnover of fatty acids during natural senescence of Arabidopsis, *Brachypodium*, and switchgrass and in Arabidopsis  $\beta$ -oxidation mutants. *Plant Physiology* **150**, 1981–1989.
- Zhang CY, Qu YG, Lian YJ, Chapman M, Chapman N, Xin J, Xin HW, Liu L. 2020. A new insight into the mechanism for cytosolic lipid droplet degradation in senescent leaves. *Physiologia Plantarum*. In press, doi:10.1111/ppl.13039.
- Zhang Y, Goldman S, Baerga R, Zhao Y, Komatsu M, Jin S. 2009. Adipose-specific deletion of *autophagy-related gene 7 (atg7)* in mice reveals a role in adipogenesis. *Proceedings of the National Academy of Sciences, USA* **106**, 19860–19865.
- Zhao L, Dai J, Wu Q. 2014. Autophagy-like processes are involved in lipid droplet degradation in *Auxenochlorella protothecoides* during the heterotrophy-autotrophy transition. *Frontiers in Plant Science* **5**, 400.
- Zhuang X, Chung KP, Cui Y, Lin W, Gao C, Kang BH, Jiang L. 2017. ATG9 regulates autophagosome progression from the endoplasmic reticulum in Arabidopsis. *Proceedings of the National Academy of Sciences, USA* **114**, E426–E435.