



## Increased soil organic carbon stocks under agroforestry: A survey of six different sites in France

Rémi Cardinael, Tiphaine Chevallier, Aurelie Cambou, Camille Beral, Bernard G. Barthès, Christian Dupraz, Celine Durand, Ernest Kouakoua, Claire Chenu

### ► To cite this version:

Rémi Cardinael, Tiphaine Chevallier, Aurelie Cambou, Camille Beral, Bernard G. Barthès, et al.. Increased soil organic carbon stocks under agroforestry: A survey of six different sites in France. Agriculture, Ecosystems & Environment, 2017, 236, pp.243–255. 10.1016/j.agee.2016.12.011 . hal-01495108

**HAL Id: hal-01495108**

**<https://agroparistech.hal.science/hal-01495108>**

Submitted on 16 Jan 2020

**HAL** is a multi-disciplinary open access archive for the deposit and dissemination of scientific research documents, whether they are published or not. The documents may come from teaching and research institutions in France or abroad, or from public or private research centers.

L'archive ouverte pluridisciplinaire **HAL**, est destinée au dépôt et à la diffusion de documents scientifiques de niveau recherche, publiés ou non, émanant des établissements d'enseignement et de recherche français ou étrangers, des laboratoires publics ou privés.

**Increased soil organic carbon stocks under agroforestry: a survey of six different sites in France**

Rémi Cardinael<sup>a,b,c</sup>, Tiphaine Chevallier<sup>a\*</sup>, Aurélie Cambou<sup>a,d</sup>, Camille Béral<sup>e</sup>, Bernard G. Barthès<sup>a</sup>, Christian Dupraz<sup>f</sup>, Céline Durand<sup>a</sup>, Ernest Kouakoua<sup>a</sup>, Claire Chenu<sup>b</sup>

<sup>a</sup> IRD, UMR Eco&Sols, Montpellier SupAgro, 2 place Viala, 34060 Montpellier, France

<sup>b</sup> AgroParisTech, UMR Ecosys, Avenue Lucien Brétignières, 78850 Thiverval-Grignon, France

<sup>c</sup> CIRAD, UPR AIDA, Avenue d'Agropolis, 34398 Montpellier, France (present address)

<sup>d</sup> AgroCampus Ouest centre d'Angers, UPSP EPHor, 2 Rue André le Nôtre, 49045 Angers, France (present address)

<sup>e</sup> Agroroof, 9 plan de Brie, 30140 Anduze, France

<sup>f</sup> INRA, UMR System, Montpellier SupAgro, 2 place Viala, 34060 Montpellier, France

\* Corresponding author. Tel.: +33 04.67.61.53.08. E-mail address: remi.cardinael@cirad.fr

**ABSTRACT**

Agroforestry systems are land use management systems in which trees are grown in combination with crops or pasture in the same field. In silvoarable systems, trees are intercropped with arable crops, and in silvopastoral systems trees are combined with pasture for livestock. These systems may produce forage and timber as well as providing ecosystem services such as climate change mitigation. Carbon (C) is stored in the aboveground and belowground biomass of the trees, and the transfer of organic matter from the trees to the soil can increase soil organic carbon (SOC) stocks. Few studies have assessed the impact of agroforestry systems on carbon storage in soils in temperate climates, as most have been

undertaken in tropical regions. This study assessed five silvoarable systems and one silvopastoral system in France. All sites had an agroforestry system with an adjacent, purely agricultural control plot. The land use management in the inter-rows in the agroforestry systems and in the control plots were identical. The age of the study sites ranged from 6 to 41 years after tree planting. Depending on the type of soil, the sampling depth ranged from 20 to 100 cm and SOC stocks were assessed using equivalent soil masses. The aboveground biomass of the trees was also measured at all sites. In the silvoarable systems, the mean organic carbon stock accumulation rate in the soil was 0.24 (0.09-0.46) Mg C ha<sup>-1</sup> yr<sup>-1</sup> at a depth of 30 cm and 0.65 (0.004-1.85) Mg C ha<sup>-1</sup> yr<sup>-1</sup> in the tree biomass. Increased SOC stocks were also found in deeper soil layers at two silvoarable sites. Young plantations stored additional SOC but mainly in the soil under the rows of trees, possibly as a result of the herbaceous vegetation growing in the rows. At the silvopastoral site, the SOC stock was significantly greater at a depth of 30 to 50 cm than in the control. Overall, this study showed the potential of agroforestry systems to store C in both soil and biomass in temperate regions.

**Keywords:** Alley cropping, Soil organic carbon storage, Equivalent soil mass, Aboveground biomass, Belowground biomass

## **1. Introduction**

Soils play an essential role in the global carbon budget (Houghton, 2007). Currently, the land sink (including soil and vegetation) absorbs about 30% of the carbon (C) emitted to the atmosphere through the burning of fossil fuel and cement production (Le Quéré et al., 2014). Since 1850, the depletion of soil organic carbon (SOC) in cultivated lands has transferred about

70 Gt C to the atmosphere (Amundson, 2001; Lal, 2004a). The potential of these SOC depleted soils as future C sinks through SOC sequestration has now been recognized (Paustian et al., 1997; Freibauer et al., 2004; Smith, 2004). In France, SOC stocks have been estimated at 3.1-3.3 Gt C in the top 30 cm of soils (Arrouays et al., 2001; Martin et al., 2011). Based on the SOC saturation capacity (Hassink, 1997), assuming that the quantity of stable SOC is limited by the amount of fine particles, Angers et al. (2011) found that the median saturation deficit of French arable topsoils was 8.1 g C kg<sup>-1</sup> soil. About 70% of French agricultural topsoils are, therefore, unsaturated in SOC and have the potential for additional SOC storage. Increasing SOC stocks is often seen as a win-win strategy (Lal, 2004a; Janzen, 2006) as it allows the transfer of CO<sub>2</sub> from the atmosphere to the soil while improving soil quality and fertility (Lal, 2004b).

Several agricultural practices have been developed to increase SOC stocks. For instance, the introduction of cover crops (Constantin et al., 2010; Poeplau and Don, 2015) or grasslands (Conant et al., 2001; Soussana et al., 2004) in the cropping sequence has proven effective. The effect of no-till farming on SOC stocks is disputed and highly variable (Luo et al., 2010; Virto et al., 2012; Dimassi et al., 2013) and seems to depend on the amount of C transferred from the crops to the soil (Virto et al., 2012). Agroforestry is a general term for agroecosystems in which trees are intercropped with crops or pasture (Nair, 1993). Silvoarable systems intercrop trees and arable crops and silvopastoral systems combine trees, pasture and livestock. These are recognized as possible land use management systems that can maintain or increase SOC stocks, both in tropical (Albrecht and Kandji, 2003) and temperate regions (Peichl et al., 2006; Bambrick et al., 2010; Wotherspoon et al., 2014). However, most studies only consider the surface soil layers (to a depth of < 20 or 30 cm) whereas trees grown in agroforestry can be very deep rooted (Mulia and Dupraz, 2006; Cardinael et al., 2015a) and affect deep SOC stocks. A recent study in the Mediterranean region of France showed that an 18-year-old silvoarable system with hybrid walnuts intercropped with durum wheat increased SOC stocks by  $0.25 \pm$

0.03 Mg C ha<sup>-1</sup> yr<sup>-1</sup> in the 0-30 cm layer and by  $0.35 \pm 0.04$  Mg C ha<sup>-1</sup> yr<sup>-1</sup> from 0 to 100 cm compared to an adjacent agricultural plot (Cardinael et al., 2015b). Furthermore, although trees affect the spatial distribution of organic matter inputs to the soil (Rhoades, 1997), sampling protocols have not always taken account of the potential impact on the spatial distribution of SOC stocks. Some authors showed that SOC stocks were greater in the tree rows than in the inter-rows, and found no gradients within the inter-rows (Peichl et al., 2006; Upson and Burgess, 2013). Bambrick et al., (2010) found that the spatial distribution of SOC stocks varied with the time after tree planting. Few studies have estimated SOC storage in agroforestry systems in temperate conditions (Howlett et al., 2011; Mosquera Losada et al., 2011; Upson and Burgess, 2013) and these studies sometimes do not have control plots without trees for comparison, making it difficult to evaluate the precise effect of agroforestry on SOC stocks (Pellerin et al., 2013).

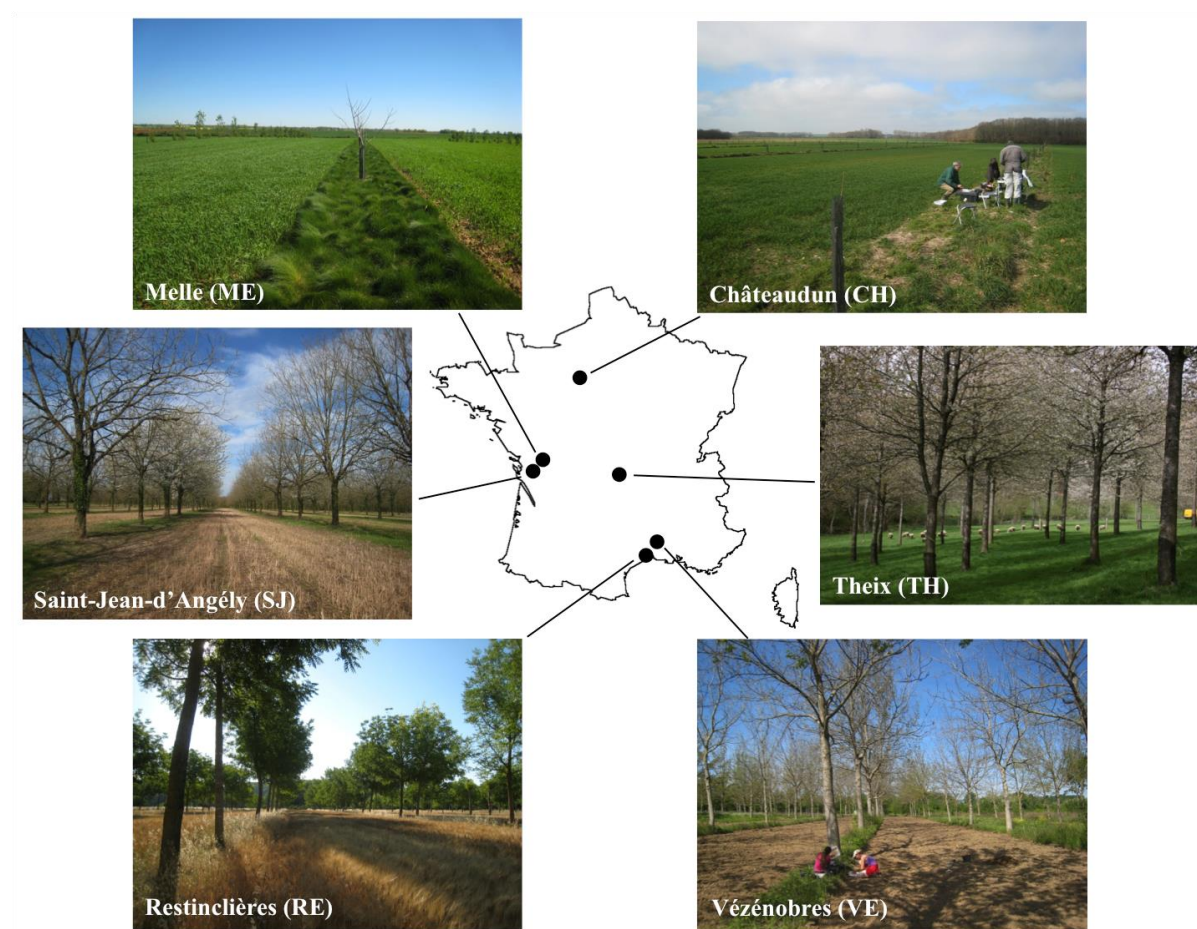
This study set out i) to quantify organic carbon stocks in soils and in the tree biomass in six agroforestry systems with adjacent agricultural control plots under different soil and climate conditions in France, ii) to study the spatial distribution of SOC stocks as a function of the distance from individual trees and the tree rows and iii) to estimate the SOC stock accumulation rates for these agroforestry systems.

## **2. Materials and methods**

### *2.1 The six agroforestry sites*

Each study site had an agroforestry system and an adjacent agricultural control plot. Before tree planting, the agroforestry plot was part of the agricultural plot, with the same soil use and management (crop rotation, fertilization, soil tillage). After tree planting, the soil management of the agroforestry inter-rows and of the agricultural plot remained identical. Rows of trees

were planted in the agroforestry fields, with natural or sown grasses between the trees. Five sites, Restinclières (RE), Châteaudun (CH), Melle (ME), Saint-Jean d'Angély (SJ), and Vézénobres (VE), were silvoarable systems with no grazing. Only one site, Theix (TH), was a silvopastoral system with regular grazing. Four sites were owned and managed by farmers and Restinclières (RE) and Theix (TH) were experimental research sites.



**Figure 1.** Location and description of the six study cases under agroforestry systems sampled in France.

108 **Table 1** Site characteristics.

109

Site	Mean annual temperature (°C)	Mean annual rainfall (mm)	Soil type (FAO)	Soil depth (cm)	Soil texture clay/silt/sand (g kg <sup>-1</sup> )		Soil pH in water
					Agroforestry	Control	
CH	11.1	595	Luvisol	0-30	200/700/100	190/710/100	7.0
ME	11.7	810	Luvisol	0-30	240/660/100	260/630/110	5.8
SJ	12.9	850	Luvisol	0-20	560/370/70	500/410/90	7.7
VE	14.5	1037	Fluvisol	0-30	110/410/480	90/370/540	8.3
				30-60	100/440/460	80/370/550	8.3
RE	15.4	873	Fluvisol	0-30	173/406/421	176/413/411	8.0
				30-50	178/416/406	177/421/402	8.1
				50-70	250/501/249	243/507/250	8.2
				70-100	309/582/109	307/586/107	8.3
TH	7.7	800	Andosol	0-20	340/300/360	380/360/260	6.5
				20-50	320/280/400	360/380/260	6.5

110 CH: Châteaudun, ME: Melle, SJ: Saint-Jean-d'Angély, VE: Vézénobres, RE: Restinclières, TH: Theix.

111

112

113 **Table 2** Description of the agroforestry plots.

Site	Tree species	Age (yrs)	Density (trees ha <sup>-1</sup> )	Distance between trees in tree rows (m)	Width of inter-rows (m)	Width of tree rows (m)	Area occupied by tree rows in the AF plot (%)	Crops
CH	Hybrid walnut	6	34	10	24	2	8	wheat, rapeseed
ME	Hybrid walnut	6	35	8	27	2	7	wheat, rapeseed, sunflower
SJ	Black walnut	41	102	7	12	2	14	sunflower, wheat, barley
VE	Hybrid walnut	18	100	10	9	2	18	rapeseed, wheat, potato, garlic
RE	Hybrid walnut	18	110	4-12	11	2	16	durum wheat, rapeseed, chickpea
TH	Wild cherry	26	200	7	No row	No row	No row	ryegrass, fescue

114 CH: Châteaudun, ME: Melle, SJ: Saint-Jean-d'Angély, VE: Vézénobres, RE: Restinclières, TH: Theix.



115 The CH silvoarable site was located in Châteaudun (Fig. 1), in the department of Eure-et-Loir  
 116 (longitude 1°17'58'' E, latitude 48°06'08'' N, elevation 147 m a.s.l.). The mean temperature  
 117 was 11.1°C and the mean annual rainfall 595 mm (years 2001-2013, INRA CLIMATIK,  
 118 <https://intranet.inra.fr/climatik>). The soil was a silty loam Luvisol (IUSS Working Group WRB,  
 119 2007) (Table 1). Hybrid walnut trees (*Juglans regia* × *nigra* cv. NG23) were planted in  
 120 February 2008 at a density of 34 trees ha<sup>-1</sup>. The trees were planted 10 m apart within the rows,  
 121 with 26 m between rows. A mix of ryegrass (*Lolium perenne* L.) and tall fescue (*Festuca*  
 122 *arundinacea* Schreb.) was sown in August 2007 in two meter wide strips along the tree rows  
 123 before the trees were planted. After tree planting, wheat (*Triticum aestivum* L. subsp. *aestivum*)  
 124 and rapeseed (*Brassica napus* L.) were grown in rotation in the control plot and in the inter-  
 125 rows (Table 2). The mean fresh grain yield was 7.5-8 t ha<sup>-1</sup> for wheat, and 3.8 t ha<sup>-1</sup> for rapeseed.  
 126 All crop residues were left in the field after harvest. The agroforestry inter-rows and the control  
 127 plot were ploughed every three years to a depth of 22 cm and harrowed to 8 cm the other years.

128 The ME silvoarable site was located in Melle (Fig. 1), in the department of Deux-Sèvres  
 129 (longitude 0°10'37'' W, latitude 46°11'54'' N, elevation 107 m a.s.l.). The mean temperature  
 130 was 11.7°C and the mean annual rainfall 810 mm (years 1990-2013, INRA CLIMATIK,  
 131 <https://intranet.inra.fr/climatik>). The soil was a silty loam Luvisol (IUSS Working Group WRB,  
 132 2007) (Table 1). Hybrid walnut trees (*Juglans regia* × *nigra* cv. NG23) were planted in 2008 at  
 133 a density of 35 trees ha<sup>-1</sup>. The trees were planted 8 m apart within the rows, with 29 m between  
 134 rows. Sheep fescue (*Festuca ovina* L.) was sown in 2008 in two meter wide strips along the  
 135 tree rows before the trees were planted. After tree planting, wheat (*Triticum aestivum* L. subsp.  
 136 *aestivum*), rapeseed (*Brassica napus* L.) and sunflower (*Helianthus annuus* L.) were grown in  
 137 rotation in the control plot and in the inter-rows (Table 2). The mean fresh grain yield was 8-  
 138 8.5 t ha<sup>-1</sup> for wheat, 3.3 t ha<sup>-1</sup> for rapeseed and 2.5 t ha<sup>-1</sup> for sunflower. Crop residues were  
 139 usually exported, but this was counterbalanced by the application of manure in both the

agroforestry inter-rows and the control plot (the farmer was unable to specify the application rates, but they were similar for both plots). Before the spring crop (sunflower), a winter cover crop was sown to prevent soil erosion and nitrate leaching. This cover crop was a mix of radish (*Raphanus sativus* L.), phacelia (*Phacelia tanacetifolia* Benth.) and mustard (*Sinapis alba* L.). The soil was ploughed every year to a depth of 20 cm in both the agroforestry inter-rows and the control plot. The agroforestry system was established on a moderate slope, while the control plot was flat.

The SJ silvoarable site was located in Saint-Jean-d'Angély (Fig. 1), in the department of Charente-Maritime (longitude 0°13'57'' W, latitude 46°00'39'' N, elevation 152 m a.s.l.). The mean temperature was 12.9°C and the mean annual rainfall 850 mm (years 1990-2013, INRA CLIMATIK, <https://intranet.inra.fr/climatik>). The soil was a carbonated silty clay Luvisol (IUSS Working Group WRB, 2007) (Table 1). Black walnut trees (*Juglans nigra* L.) were planted in 1973 at a density of 102 trees ha<sup>-1</sup>. The trees were planted 7 m apart within the tree rows, with 14 m between rows. The rows of trees were two meters wide, and covered by spontaneous herbaceous vegetation. After tree planting, sunflower (*Helianthus annuus* L.), wheat (*Triticum aestivum* L. subsp. *aestivum*) and barley (*Hordeum vulgare* L.) were grown in rotation in the control plot and in the inter-rows (Table 2). Crop residues were left in the field after harvest. The soil was ploughed every three years to a depth of 10-20 cm in both the agroforestry inter-rows and the control plot.

The VE silvoarable site was located in Vézénobres (Fig. 1), in the department of Gard (longitude 4°06'37'' E, latitude 46°00'39'' N, elevation 102 m a.s.l.). The climate was sub-humid Mediterranean with a mean temperature of 14.5°C and a mean annual rainfall of 1037 mm (mean 1995-2007, experimental site weather station). The soil was a deep sandy loam alluvial Fluvisol (IUSS Working Group WRB, 2007) (Table 1) originating from deposits from the granitic Cevennes mountain range and was, therefore, not calcareous. Hybrid walnut trees

(*Juglans regia* × *nigra* cv. NG23) were planted in 1995 at a density of 100 trees ha<sup>-1</sup>. The trees were planted 10 m apart with the rows, with 10 m between rows. The tree rows were two meters wide and were covered by spontaneous herbaceous vegetation. In the inter-rows, rapeseed (*Brassica napus* L.) and wheat (*Triticum aestivum* L. subsp. *aestivum*) were grown in rotation until 2010 (Table 2). In 2011, the farm changed over to organic farming and potatoes were planted (*Solanum tuberosum* L.). In 2012 garlic (*Allium sativum* L.) was grown in the inter-rows. In 2013 the inter-rows were left fallow and in 2014 sunflower (*Helianthus annuus* L.) was sown. The same crops were grown in the control plot, except in 2011 when wheat (*Triticum aestivum* L. subsp. *aestivum*) was sown and in 2012 when the control was left fallow. The soil was occasionally ploughed to a depth of 20 cm in both the agroforestry inter-rows and the control plot.

The RE site was located in Prades-le-Lez, at the Restinclières experimental site (Fig. 1), in the department of Hérault (longitude 04°01' E, latitude 43°43' N, elevation 54 m a.s.l.). A full description of this site is given in the study by Cardinael et al. (2015b). The climate was sub-humid Mediterranean with a mean temperature of 15.4°C and a mean annual rainfall of 873 mm (years 1995–2013, experimental site weather station). The soil was a deep carbonated sandy loam Fluvisol (IUSS Working Group WRB, 2007) (Table 1). Hybrid walnut trees (*Juglans regia* × *nigra* cv. NG23) were planted in 1995 and the density was 110 trees ha<sup>-1</sup> at the time of the study (Table 2). The trees were planted 4 to 8 m apart along the rows with 13 m between rows. The two meter wide tree rows were covered by spontaneous herbaceous vegetation. They were mainly intercropped with durum wheat (*Triticum turgidum* L. subsp. *durum*) but also with rapeseed (*Brassica napus* L.) and chickpea (*Cicer arietinum* L.). The soil was regularly ploughed to a depth of 20 cm in both the agroforestry inter-rows and the control plot.

The TH silvopastoral site was located at the Theix experimental site (Fig. 1), in the department of Puy-de-Dôme (longitude 3°01'39'' E, latitude 45°42'58'' N, elevation 829 m a.s.l.). The mean temperature was 7.7°C and the mean annual rainfall 800 mm (years 1990-2013, INRA CLIMATIK, <https://intranet.inra.fr/climatik>). The soil was a clay loam Andosol (IUSS Working Group WRB, 2007) (Table 1). Wild cherry trees (*Prunus avium* L.) were planted in 1988 at a density of 200 trees ha<sup>-1</sup> on a natural permanent pasture. The trees were planted 7 m apart and the soil was uniformly covered by a permanent pasture, mainly ryegrass (*Lolium perenne* L.) and fescue (*Festuca* sp.), in both the control and agroforestry plots (Table 2). There was no distinction between tree rows and inter-rows in terms of soil cover and management. The pasture was regularly grazed by sheep in both the control and agroforestry plots.

## 2.2 Soil sampling protocol

The sampling protocol was defined to allow for the spatial distribution of SOC stocks owing to the presence of trees and rows of trees, with sampling points at varying distances from the trees. The agroforestry designs varied between sites with different distances between the trees within the rows and between the rows. The sampling protocol was flexible to take account of these differences but consistent enough to allow comparisons between sites. A sampling pattern was defined with sampling points in transects around one tree. This was a rectangle with dimensions  $\frac{L}{2} \times \frac{d}{2}$ , where  $L$  is the distance between tree rows and  $d$  is the distance between trees in the rows (Fig. 2). This pattern is a quarter of the Voronoi polygon which is the elementary space defined by the half distances between the sampled tree and its neighbors, as commonly used to estimate root biomass (Levillain et al., 2011; Picard et al., 2012). At all sites, nine soil samples per pattern were taken at fixed positions around the trees, at 1, 2 and 3 m in the tree row, in the inter-row in front of the tree, and in the inter-row between two trees. If  $L \geq 8$  m, soil samples

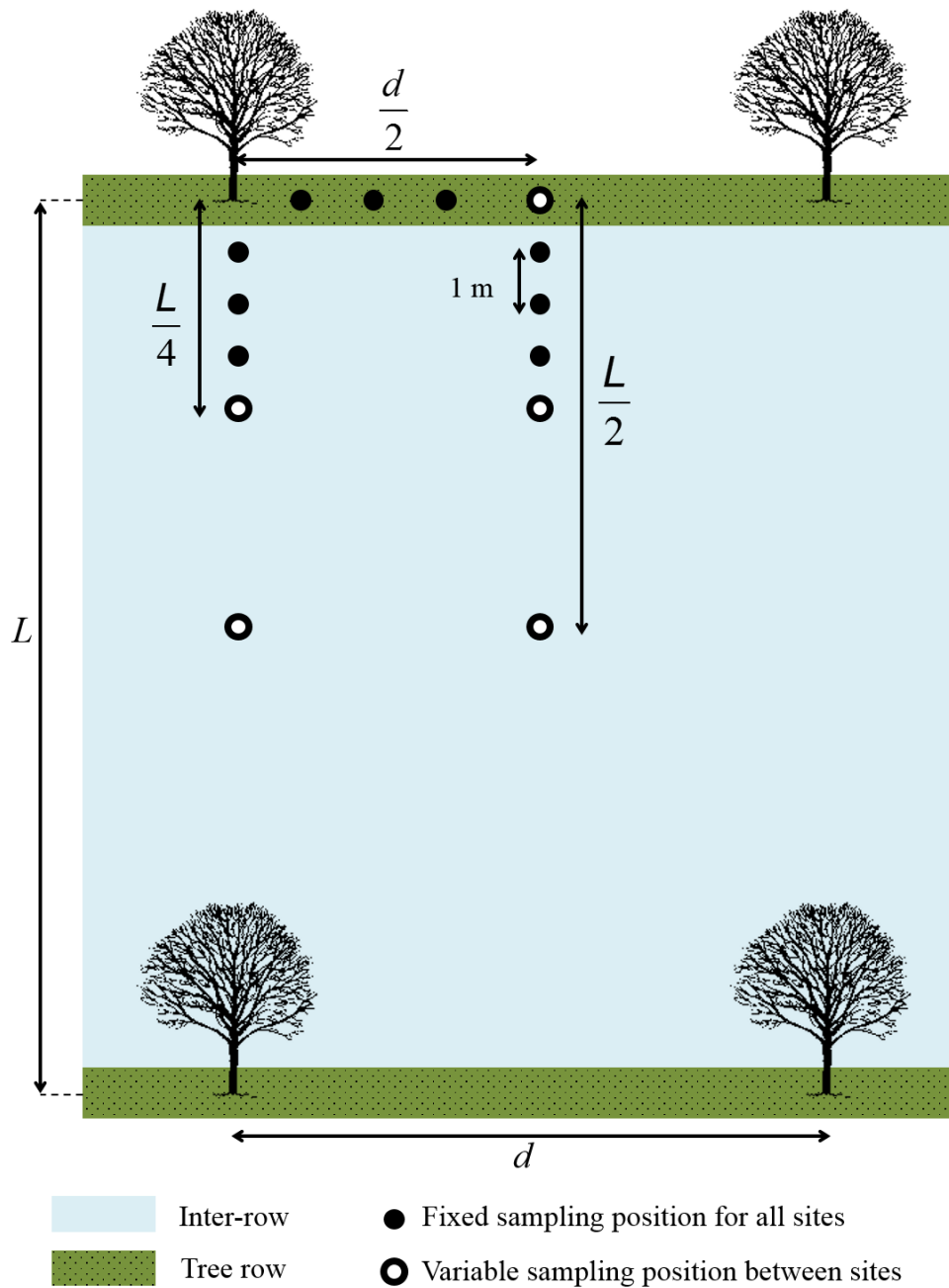
213 were additionally taken at mid-distance  $\frac{L}{2}$ , and, if  $L \geq 16$  m, soil samples were also taken at  $\frac{L}{4}$ . If  
 214  $d \geq 8$  m, soil samples were also taken at  $\frac{d}{2}$ . This sampling pattern was applied three times in the  
 215 agroforestry plots at all sites. Two sampling patterns were oriented north of the tree rows (if the  
 216 rows were oriented east-west) or west of the rows (if the rows were oriented north-south) and  
 217 one sampling pattern was oriented south or east, respectively. Thirty-six sampling points were,  
 218 therefore, defined for the agroforestry plot at the CH site, twenty-four at the SJ site, thirty at the  
 219 VE site, and twenty-seven at the TH site (Table 3). In the control plots, a simpler sampling  
 220 pattern was applied in triplicate. This pattern was a rectangle with dimensions  $\frac{L}{2} \times \frac{d}{2}$ , with soil  
 221 samples taken at each corner (12 sampling points).

222 At the ME site, the agricultural control plot was flat, whereas the agroforestry plot was on a  
 223 moderate slope. The SOC-rich topsoil in the agroforestry plot might, therefore, have been  
 224 eroded before the start of the experiment. To take account of this topography difference, six  
 225 soil samples from the middle of the inter-row (two sampling positions for each of the three  
 226 sampling patterns) were used as an alternate arable control. Because the inter-rows were 27 m  
 227 wide and the 6-year-old trees were only 3 m high, the soil in the middle of the inter-rows had  
 228 probably not yet been affected by the presence of trees. 30 sampling points were defined in the  
 229 agroforestry plot and 6 in the control plot (Table 3).

230 The RE site had been the subject of a previous study (Cardinael et al., 2015b) to map SOC  
 231 stocks at plot scale. The sampling protocol at this site was, therefore, very dense: 100 soil  
 232 samples were taken from the agroforestry plot and 93 from the control plot (Table 3). Sampling  
 233 points were located every 5 m along a regular grid ( $25 \times 25$  m), and at 1, 2 and 3 m around nine  
 234 walnut trees, in the inter-rows and in the tree rows.

235 The sampling depths were 30 cm at the CH and ME sites, 20 cm at the SJ site, 60 at the VE  
 236 site, 100 at the RE site and 50 cm at the TH site. At the SJ site, the sampling depth corresponded

237 to the maximum soil depth. Soil samples were taken every 10 cm depth from the surface, except  
 238 at the RE site (at 10 cm and every 20 cm from 10 cm).



240 **Figure 2.** Sampling pattern for the agroforestry sites (except for the RE site).  $L$  is the distance  
 241 between tree rows,  $d$  is the distance between trees on the rows.

242

### 2.3 Bulk density measurement

The soil samples were collected in April 2014 at all sites, except at the RE site which was sampled in May 2013. Soil samples were taken every 10 cm from the surface using a 500-cm<sup>3</sup> cylinder, except at the RE site where soil samples were taken every 20 cm depth after the top 10 cm. After air-drying in the lab, the soil samples were oven-dried at 105°C for 48 hours, sieved to 2 mm and weighed without coarse particles > 2 mm. The bulk density (g cm<sup>-3</sup>) was calculated as the ratio of the dry mass of fine soil (< 2 mm) to the cylinder volume.

### 2.4 Organic carbon analysis

The soil samples were dried at 40°C and ball milled until they passed through a 200 µm mesh sieve. The presence of inorganic carbon was tested with HCl. If the soil contained inorganic carbon, carbonates were removed by acid fumigation, as described in Harris et al. (2001). This was the case for samples from the SJ and RE sites. 30 mg of soil were placed in open Ag-foil capsules. The capsules were then placed in the wells of a microtiter plate and 50 µL of demineralized water was added to each capsule. The microtiter plate was placed in a vacuum desiccator with a beaker filled with 100 mL of concentrated HCl. The samples were exposed to HCl vapor for 8 h and then dried at 40°C for 48 h. The capsules were then enclosed in a bigger tin capsule. All samples were analyzed for organic carbon concentration using a CHN elemental analyzer (Carlo Erba NA 2000, Milan, Italy).

### 2.5 SOC stock calculation

The SOC stock at soil sample level (mg C cm<sup>-3</sup>) is defined as the product of the SOC concentration (mg C g<sup>-1</sup>) and the bulk density (g cm<sup>-3</sup>) and is then calculated for each soil profile

(kg C m<sup>-2</sup>) by summing the SOC stocks in the samples through the profile. For each site, the SOC stocks were calculated on an equivalent soil mass (ESM) basis (Ellert and Bettany, 1995) to enable comparison between all locations (control, tree rows, inter-rows) even where the soil bulk density varied within the same site. SOC stocks in the agroforestry plot (Mg C ha<sup>-1</sup>) were calculated by adding the tree row and inter-row SOC stocks, weighted by their respective relative surface areas:

$$\text{SOC stock}_{\text{Agroforestry}} = \frac{p \times \text{SOC stock}_{\text{Tree row}} + (100 - p) \times \text{SOC stock}_{\text{Inter-row}}}{100} \quad (1)$$

where  $p$  is the percentage of tree row surface area in the agroforestry plot (Table 2).

The delta SOC stock (Mg C ha<sup>-1</sup>) at a given depth was expressed as the difference in the SOC stock between the agroforestry and the control plot:

$$\Delta_{\text{SOC stock}} = \text{SOC stock}_{\text{Agroforestry}} - \text{SOC stock}_{\text{Control}} \quad (2)$$

The SOC stock accumulation rates under an agroforestry system at a given depth was calculated by dividing the delta SOC stock by the number of years since tree planting.

## 2.6 Tree aboveground and belowground biomass

At each site, 10 to 20 trees were measured to estimate the aboveground biomass. As the trees in the farmers' fields could not be felled, the aboveground biomass was estimated by multiplying the volume of the trunk and branches by the wood density, using the global wood density database (Chave et al., 2009). The trunk volume was estimated as the sum of the volume of three truncated cones, from the soil surface up to 1.30 m, from 1.30 m to the first branch and



from the first branch to the top of the tree. The trunk diameter was measured 5 cm above the soil surface, at 1.30 m (Diameter at Breast Height, DBH) and below the first branch. The total height ( $H_{tot}$ ) and merchantable height ( $H$ ) of the trees were also measured. The volume of the first order branches (branches arising directly off the trunk) was also estimated by measuring the diameter of the branches at the trunk and the length of the branches and branch volumes were calculated as cone volumes. For the RE site, three trees were felled to measure the trunk and branch biomass directly. The carbon concentrations of the trunk and branches of the *Juglans regia* × *nigra* cv. NG23 were measured. As it was not possible to sample wood from the tree trunks at the other sites, the C concentrations were considered to be the same for *Prunus avium* and *Juglans nigra*. This simplification was possible because these trees are slow growing species and there is usually little variation in their wood C concentration (462.7 to 499.7 mg C g<sup>-1</sup> DM) (Lamlom and Savidge, 2003). It was also assumed that young and old trees had the same wood density and C concentration.

So far as we are aware, there is no allometric equation for estimating the belowground biomass of temperate agroforestry trees and so the equation proposed by Cairns et al. (1997) for temperate forests was used:

$$RB = e^{-1.3267+0.8877 \times \ln(AB)+0.1045 \times \ln(Age)} \quad (3)$$

where RB is the total root biomass (Mg C ha<sup>-1</sup>), AB is the aboveground biomass (Mg C ha<sup>-1</sup>) and Age is the age of the plantation (yr).

## 2.7 Statistical analyses

The influence of the sampling location in the inter-rows (in front of a tree or between two trees) on the SOC concentration, bulk density and SOC stock was determined using mixed effects

models. This analysis was done at each site using the *nlme* package (Pinheiro et al., 2013). An ANOVA was performed on these models. Mixed effects models were then fitted for each site using the whole soil data set. The SOC concentration, bulk density and SOC stock were compared as a function of depth, location (control, tree row, inter-row) and distance from the closest tree. An ANOVA was performed on these models. The SOC stock were compared between tree rows and inter-rows, between inter-rows and the control plot and between the agroforestry plot and the control plot. The statistical analyses were performed using R version 3.1.1 (R Development Core Team, 2013), at a significance level of  $< 0.05$ .

### 3. Results

#### 3.1 Soil bulk density

At all sites, the soil bulk density increased significantly with increasing soil depth (Table 3, S1). In the top 30 cm, the bulk density ranged from 0.7 to 1.6 g cm<sup>-3</sup> depending on the site. There was no significant difference in bulk density between the tree row and the inter-row except in the top 10 cm at the ME, SJ and RE sites, where it was lower in the tree row than in the inter-row and in the control (Table 3, S1). There was no significant difference between the control and the inter-row at any depth, except at the RE site where the bulk density was higher in the top 10 cm in the control plot (Table 3, S1).. The distance from the closest tree had no significant effect on the bulk density except at the SJ site (Table S1). There was no significant difference in the inter-row between samples collected in front of a tree or between two trees at any of the sites or at any depth (p-value  $\geq 0.18$ ), except at the ME site (p-value = 0.03) (Table S1).

336 **Table 3** Mean soil bulk density ( $\text{g cm}^{-3}$ ) and mean soil organic carbon (SOC) concentrations ( $\text{mg C g}^{-1}$ ) with associated standard errors.

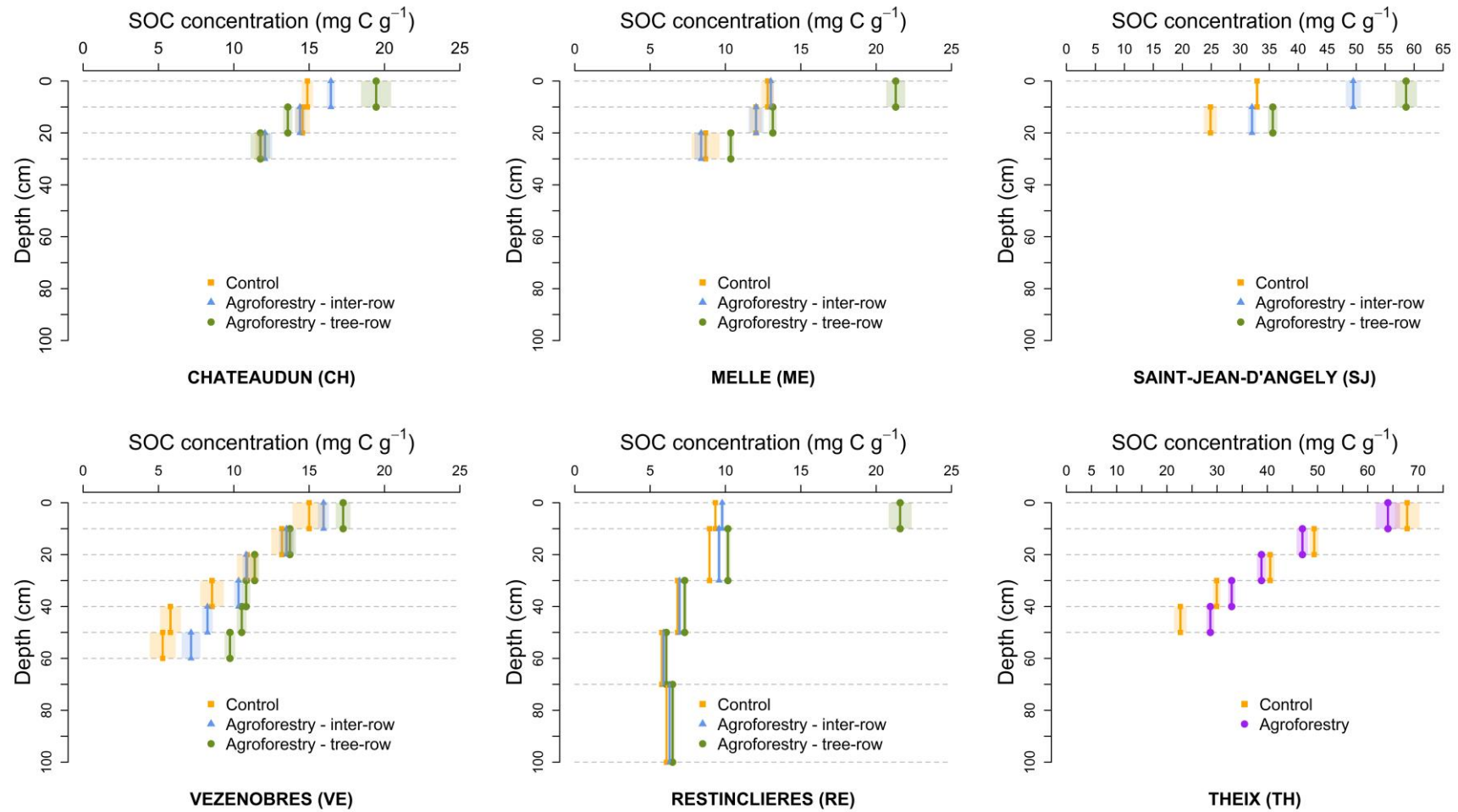
Site	Soil depth (cm)	Number of soil samples			Bulk density ( $\text{g cm}^{-3}$ )			SOC concentration ( $\text{mg C g}^{-1}$ )		
		Tree row	Inter-row	Control	Tree row	Inter-row	Control	Tree row	Inter-row	Control
CH	0-10	12	24	12	$1.09 \pm 0.03$	$1.10 \pm 0.02$	$1.18 \pm 0.02$	$19.44 \pm 1.00$	$16.44 \pm 0.26$	$14.88 \pm 0.38$
	10-20	12	24	12	$1.12 \pm 0.02$	$1.13 \pm 0.02$	$1.16 \pm 0.03$	$13.58 \pm 0.31$	$14.39 \pm 0.34$	$14.56 \pm 0.48$
	20-30	12	24	12	$1.15 \pm 0.02$	$1.20 \pm 0.01$	$1.25 \pm 0.02$	$11.76 \pm 0.65$	$12.07 \pm 0.48$	$11.78 \pm 0.35$
ME	0-10	12	18	6	$1.04 \pm 0.03$	$1.27 \pm 0.02$	$1.31 \pm 0.01$	$21.30 \pm 0.63$	$13.01 \pm 0.19$	$12.80 \pm 0.43$
	10-20	12	18	6	$1.28 \pm 0.02$	$1.29 \pm 0.02$	$1.37 \pm 0.03$	$13.14 \pm 0.26$	$12.03 \pm 0.50$	$12.02 \pm 0.40$
	20-30	12	18	6	$1.21 \pm 0.01$	$1.34 \pm 0.01$	$1.35 \pm 0.02$	$10.35 \pm 0.21$	$8.38 \pm 0.44$	$8.68 \pm 0.93$
SJ	0-10	8	16	12	$0.67 \pm 0.03$	$0.76 \pm 0.02$	$0.78 \pm 0.01$	$58.60 \pm 1.88$	$49.49 \pm 1.28$	$32.89 \pm 0.33$
	10-20	8	16	12	$0.84 \pm 0.03$	$0.78 \pm 0.03$	$0.88 \pm 0.04$	$35.60 \pm 0.82$	$32.01 \pm 0.67$	$24.86 \pm 1.12$
VE	0-10	12	18	10	$1.06 \pm 0.04$	$0.98 \pm 0.03$	$0.91 \pm 0.02$	$17.25 \pm 0.49$	$15.95 \pm 0.37$	$15.00 \pm 1.11$
	10-20	12	18	10	$1.12 \pm 0.02$	$1.18 \pm 0.02$	$1.24 \pm 0.03$	$13.72 \pm 0.40$	$13.50 \pm 0.49$	$13.19 \pm 0.70$
	20-30	12	18	10	$1.16 \pm 0.03$	$1.25 \pm 0.01$	$1.31 \pm 0.02$	$11.38 \pm 0.30$	$10.83 \pm 0.25$	$10.89 \pm 0.68$
	30-40	12	18	10	$1.29 \pm 0.04$	$1.39 \pm 0.02$	$1.47 \pm 0.04$	$10.82 \pm 0.27$	$10.31 \pm 0.29$	$8.55 \pm 0.78$
	40-50	12	18	10	$1.30 \pm 0.05$	$1.37 \pm 0.03$	$1.34 \pm 0.03$	$10.52 \pm 0.33$	$8.25 \pm 0.35$	$5.79 \pm 0.69$
	50-60	12	18	10	$1.36 \pm 0.04$	$1.39 \pm 0.04$	$1.37 \pm 0.06$	$9.74 \pm 0.35$	$7.16 \pm 0.62$	$5.28 \pm 0.86$
RE	0-10	40	60	93	$1.10 \pm 0.02$	$1.23 \pm 0.03$	$1.41 \pm 0.01$	$21.59 \pm 0.76$	$9.78 \pm 0.13$	$9.33 \pm 0.06$
	10-30	40	60	93	$1.49 \pm 0.01$	$1.60 \pm 0.02$	$1.61 \pm 0.00$	$10.16 \pm 0.16$	$9.57 \pm 0.12$	$8.94 \pm 0.05$
	30-50	40	60	93	$1.71 \pm 0.01$	$1.67 \pm 0.02$	$1.73 \pm 0.00$	$7.29 \pm 0.15$	$6.95 \pm 0.11$	$6.82 \pm 0.10$
	50-70	40	60	93	$1.73 \pm 0.01$	$1.77 \pm 0.01$	$1.80 \pm 0.00$	$6.07 \pm 0.11$	$5.89 \pm 0.07$	$5.77 \pm 0.06$
	70-100	40	60	93	$1.68 \pm 0.00$	$1.71 \pm 0.00$	$1.74 \pm 0.00$	$6.49 \pm 0.16$	$6.29 \pm 0.06$	$6.09 \pm 0.06$
TH	0-10		27	10	$0.75 \pm 0.02$		$0.69 \pm 0.02$	$64.00 \pm 2.40$		$67.83 \pm 2.45$
	10-20		27	10	$0.79 \pm 0.01$		$0.75 \pm 0.01$	$46.97 \pm 1.15$		$49.31 \pm 0.89$
	20-30		27	10	$0.80 \pm 0.02$		$0.73 \pm 0.02$	$38.82 \pm 0.88$		$40.56 \pm 0.86$
	30-40		27	10	$0.82 \pm 0.01$		$0.78 \pm 0.02$	$32.90 \pm 0.70$		$29.92 \pm 0.75$
	40-50		19	10	$0.80 \pm 0.01$		$0.79 \pm 0.03$	$28.65 \pm 0.76$		$22.69 \pm 1.25$

337

338 At the TH silvopastoral site, no distinction was made between tree rows and inter-rows (uniform cover), values are for the whole agroforestry plot.

339 CH: Châteaudun, ME: Melle, SJ: Saint-Jean-d'Angély, VE: Vézénobres, RE: Restinclières, TH: Theix.

340



341

342 **Figure 3.** Soil organic carbon concentration (mg C g<sup>-1</sup>) at the different sites. Transparent rectangles represent standard errors. At the TH  
 343 silvopastoral site, no distinction was made between tree rows and inter-rows (uniform cover), values are for the whole agroforestry plot.

### 3.2 Soil organic carbon concentration

The SOC concentration decreased significantly with increasing soil depth, except in the ploughed layer, where it was uniform (Table 3, S1). At all sites, the SOC concentration in the top 10 cm was significantly higher in the tree row than in the inter-row (Fig. 3). However, there was no significant difference in the inter-row between samples collected in front of a tree and between two trees ( $p\text{-value} \geq 0.32$ ) at any site and at any depth. The SOC concentration depended significantly on the distance from the trees only at the oldest site (SJ,  $p\text{-value} < 0.001$ ) (Table S1). At sites CH, SJ and RE, the SOC concentration in the top 10 cm was significantly higher in the inter-rows than in the control plot (Fig. 3, Table 3). At the VE and RE silvoarable sites, the SOC concentration was significantly higher in the inter-row than in the control below 30 cm (Fig. 3, Table 3). At the TH silvopastoral site, the SOC concentration below 30 cm was also significantly higher in the silvopasture than in the tree-less pasture (Fig. 3, Table 3).

### 3.3 Soil organic carbon stock

The SOC stock was mainly influenced by depth and location (Table S1). In the inter-row, there was no significant difference between samples collected in front of a tree and between two trees ( $p\text{-value} \geq 0.30$ ). The distance from the closest tree had no significant effect on the SOC stock ( $p\text{-value} \geq 0.5$ ) except at the SJ site ( $p\text{-value} = 0.005$ ) (Table S1). In the silvoarable systems, the SOC stock was significantly higher in the tree rows than in the inter-rows in the top 10 cm, even in young plantations (CH and ME sites) (Fig. 4). The SOC stock was also significantly higher in the inter-rows than in the control at depths of 10 cm at the CH site, 20 cm at the SJ site and 30 cm at the RE site, as happened for SOC concentration (Fig. 4). Unlike, at the VE site, the SOC stock was higher in the inter-rows than in the control below 30 cm (Fig. 4). At

the TH silvopastoral site, the SOC stock below 30 cm was higher in the agroforestry plot than in the control.

In the top 30 cm, the delta SOC stock between silvoarable systems and control plots was significantly positive except at the ME and VE sites (Table 4). For the silvoarable sites, the delta SOC stock ranged from 0.5 to 4.5 Mg C ha<sup>-1</sup> in the top 30 cm (Table 4), and was about 19 Mg C ha<sup>-1</sup> in the top 20 cm for the oldest silvoarable system (SJ). At the RE and VE silvoarable sites, the delta SOC stock was significantly positive below 30 cm depth. At the TH silvopastoral site, the delta SOC stock was not significantly different in the top 30 cm ( $-0.16 \pm 0.25$  Mg C ha<sup>-1</sup>) but was significantly positive for the whole soil profile ( $0.49 \pm 0.27$  Mg C ha<sup>-1</sup>) down to 60 cm (Table 4).

### 3.4 Carbon stock in the tree biomass

The wood density of *Juglans regia* × *nigra* cv. NG23 was 0.62 g cm<sup>-3</sup>, that of *Juglans nigra* was 0.59 g cm<sup>-3</sup> and that of *Prunus avium* was 0.54 g cm<sup>-3</sup>. The C concentrations of the trunk and branches of 18-year-old *Juglans regia* × *nigra* cv. NG23 were  $445.71 \pm 1.04$  and  $428.64 \pm 1.70$  mg C g<sup>-1</sup> DM, respectively. At the silvoarable sites, the organic carbon stocks in the aboveground biomass of the trees ranged from 0.02 to 26.64 Mg C ha<sup>-1</sup> depending on the tree density and age (Table 5). The aboveground tree C stock was the highest at the silvopastoral site, reaching about 37 Mg C ha<sup>-1</sup>. The estimated C stocks in the tree belowground biomass ranged from 0.01 to 6.61 Mg C ha<sup>-1</sup> at the silvoarable sites and was more than 9 Mg C ha<sup>-1</sup> at the TH silvopastoral site (Table 5).

390 **Table 4** Soil organic carbon stock (Mg C ha<sup>-1</sup>) and SOC stock accumulation rate (Mg C ha<sup>-1</sup> yr<sup>-1</sup>).

Site	Cumulative ESM (Mg ha <sup>-1</sup> )	Approximate soil depth (cm)	Cumulative SOC stock (Mg C ha <sup>-1</sup> )				$\Delta_{SOC\ stock}$ (Mg C ha <sup>-1</sup> )	SOC stock accumulation rate (Mg C ha <sup>-1</sup> yr <sup>-1</sup> )		
			Tree row	Inter row	AF	Control	AF – Control	AF/Control	Tree row/Control	Inter-row/Control
CH	1000	0-10	19.4 ± 1.0	16.4 ± 0.3	16.7 ± 0.3	14.9 ± 0.4	1.8 ± 0.5*	0.30 ± 0.08*	0.76 ± 0.18*	0.26 ± 0.08*
	2100	0-20	34.8 ± 1.2	32.5 ± 0.5	32.7 ± 0.5	31.0 ± 0.9	1.7 ± 1.0*	0.28 ± 0.17*	0.63 ± 0.25*	0.25 ± 0.17*
	3250	0-30	48.4 ± 1.7	46.6 ± 1.0	46.7 ± 1.0	45.0 ± 1.1	1.7 ± 1.4*	0.29 ± 0.24*	0.57 ± 0.33*	0.27 ± 0.25*
ME	1000	0-10	21.2 ± 0.6	13.0 ± 0.2	13.6 ± 0.2	12.2 ± 0.3	1.4 ± 0.4*	0.24 ± 0.07*	1.50 ± 0.11*	0.14 ± 0.07*
	2200	0-20	37.2 ± 0.6	27.7 ± 0.5	28.4 ± 0.5	26.4 ± 0.9	2.0 ± 1.1*	0.33 ± 0.18*	1.79 ± 0.19*	0.22 ± 0.18*
	3500	0-30	51.1 ± 0.8	39.9 ± 0.9	40.7 ± 0.9	40.1 ± 1.7	0.5 ± 2.0	0.09 ± 0.33	1.83 ± 0.32*	-0.04 ± 0.33
SJ	700	0-10	40.6 ± 1.1	34.6 ± 0.9	35.5 ± 0.8	23.0 ± 0.2	12.4 ± 0.8*	0.30 ± 0.02*	0.43 ± 0.03*	0.28 ± 0.02*
	1450	0-20	67.7 ± 1.1	59.8 ± 1.0	60.9 ± 0.9	42.1 ± 0.8	18.8 ± 1.2*	0.46 ± 0.03*	0.62 ± 0.03*	0.43 ± 0.03*
VE	900	0-10	15.5 ± 0.5	14.6 ± 0.4	14.8 ± 0.3	13.5 ± 1.0	1.3 ± 1.0*	0.07 ± 0.06*	0.11 ± 0.06*	0.06 ± 0.06*
	2000	0-20	31.2 ± 0.8	29.5 ± 0.8	29.8 ± 0.6	27.9 ± 1.5	1.9 ± 1.6*	0.11 ± 0.09*	0.18 ± 0.09*	0.09 ± 0.09*
	3150	0-30	44.7 ± 1.0	42.4 ± 0.9	42.8 ± 0.8	40.8 ± 2.0	2.0 ± 2.2	0.11 ± 0.12	0.21 ± 0.12*	0.09 ± 0.12
	4400	0-40	58.1 ± 1.2	55.1 ± 1.2	55.7 ± 1.0	51.8 ± 2.5	3.9 ± 2.7*	0.22 ± 0.15*	0.35 ± 0.16*	0.19 ± 0.16*
	5700	0-50	72.0 ± 1.5	66.8 ± 1.3	67.7 ± 1.1	61.2 ± 3.2	6.5 ± 3.4*	0.36 ± 0.19*	0.60 ± 0.20*	0.31 ± 0.19*
	7050	0-60	85.3 ± 1.9	77.1 ± 1.6	78.6 ± 1.4	68.6 ± 4.1	10.0 ± 4.3*	0.56 ± 0.24*	0.93 ± 0.25*	0.48 ± 0.25*
RE	1000	0-10	21.6 ± 1.0	9.8 ± 0.4	11.7 ± 0.3	9.3 ± 0.1	2.3 ± 0.4*	0.13 ± 0.02*	0.68 ± 0.05*	0.02 ± 0.02*
	4000	0-30	52.8 ± 1.4	37.9 ± 0.6	40.3 ± 0.5	35.8 ± 0.2	4.5 ± 0.6*	0.25 ± 0.03*	0.95 ± 0.08*	0.12 ± 0.03*
	7300	0-50	77.1 ± 1.5	62.0 ± 0.7	64.4 ± 0.6	59.4 ± 0.2	5.0 ± 0.6*	0.28 ± 0.04*	0.98 ± 0.08*	0.14 ± 0.04*
	10700	0-70	98.1 ± 1.5	82.4 ± 0.7	84.9 ± 0.6	79.7 ± 0.3	5.1 ± 0.7*	0.29 ± 0.04*	1.02 ± 0.08*	0.15 ± 0.04*
	15700	0-100	130.4 ± 1.5	113.7 ± 0.7	116.4 ± 0.7	110.1 ± 0.3	6.3 ± 0.7*	0.35 ± 0.04*	1.13 ± 0.09*	0.20 ± 0.05*
TH	700	0-10	-	-	44.2 ± 3.4	47.1 ± 1.6	-2.9 ± 3.8	-0.11 ± 0.14	-	-
	1450	0-20	-	-	80.4 ± 5.0	84.1 ± 1.9	-3.7 ± 5.3	-0.14 ± 0.20	-	-
	2200	0-30	-	-	110.2 ± 6.1	114.3 ± 2.3	-4.1 ± 6.5	-0.16 ± 0.25	-	-
	3000	0-40	-	-	137.6 ± 6.5	138.2 ± 2.3	-0.5 ± 6.9	-0.02 ± 0.26	-	-
	3800	0-50	-	-	169.3 ± 6.5	156.5 ± 2.7	12.8 ± 7.0*	0.49 ± 0.27*	-	-

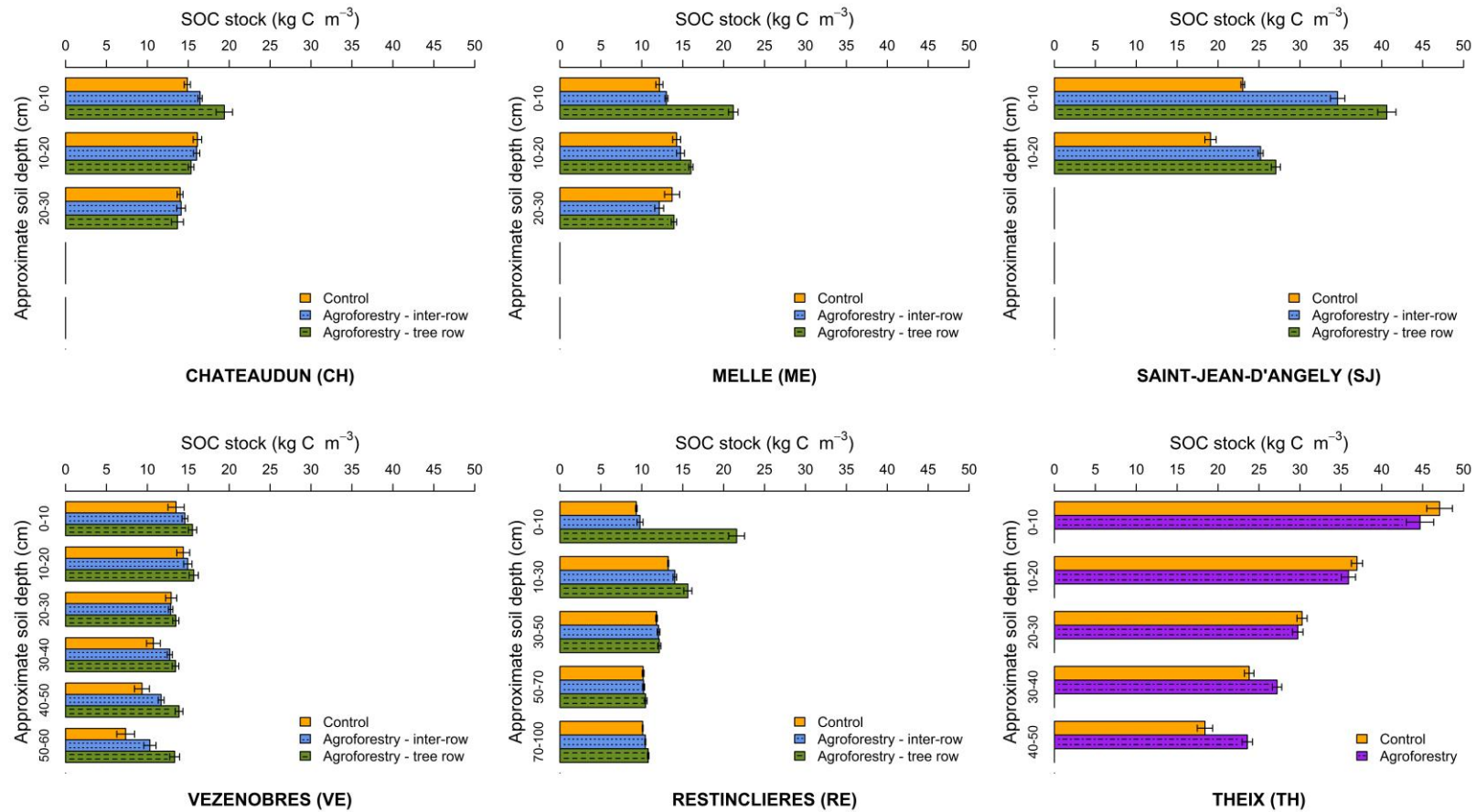


391 Associated errors are standard errors. Approximate depths are presented here to give a better understanding of the ESM for a given site but do not  
392 correspond to the precise mass of the profile, which may vary between tree rows, inter-rows and the control (Ellert and Bettany, 1995). At the TH  
393 silvopastoral site, no distinction was made between tree rows and inter-rows (uniform cover). Significantly different (p-value < 0.05) delta SOC  
394 stock ( $\Delta_{SOC\ stock}$ ) and additional SOC storage rate are followed by \*. ESM: Equivalent Soil Mass, AF: Agroforestry. CH: Châteaudun, ME: Melle,  
395 SJ: Saint-Jean-d'Angély, VE: Vézénobres, RE: Restinclières, TH: Theix.

396

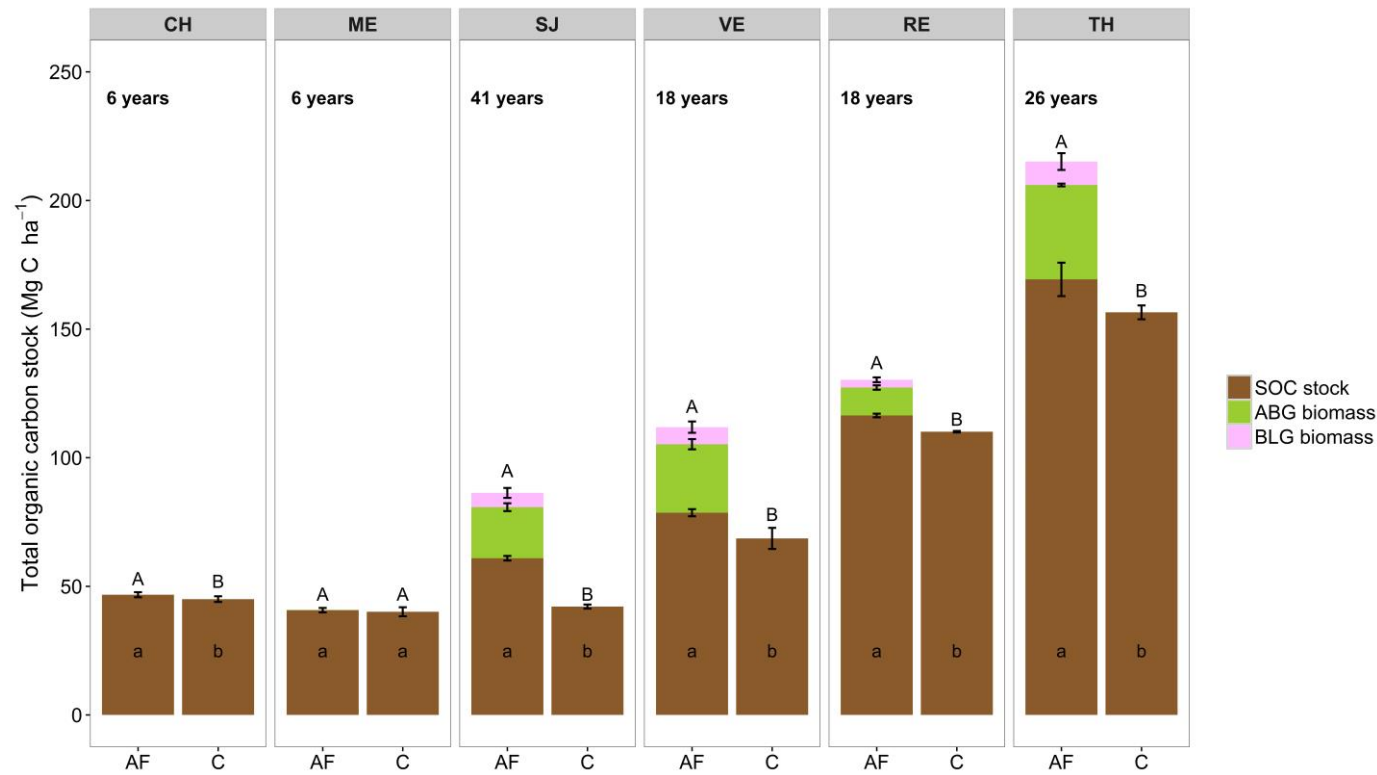
397

398



399

400 **Figure 4.** Soil organic carbon stock (kg C m<sup>-3</sup>) at the different sites. Bars represent standard errors. Approximate depths are presented but refer to  
 401 equivalent soil mass. At the TH silvopastoral site, no distinction was made between tree rows and inter-rows (uniform cover), values are  
 402 for the whole agroforestry plot.



403

404 **Figure 5.** Total organic carbon stock ( $\text{Mg C ha}^{-1}$ ) of the different sites. AF: agroforestry, C: agricultural control. SOC: Soil organic carbon, ABG:  
 405 Aboveground, BLG: Belowground. CH: Châteaudun, ME: Melle, SJ: Saint-Jean-d'Angély, VE: Vézénobres, RE: Restinclières, TH:  
 406 Theix. Studied depths vary between sites: 30 cm for CH, 30 cm for ME, 20 cm for SJ, 60 cm for VE, 100 cm for RE and 50 cm for TH.  
 407 Different lowercase letters indicate a significant ( $p\text{-value} < 0.05$ ) difference of SOC stock between AF and C plots per site, and different  
 408 uppercase letters indicate a significant difference ( $p\text{-value} < 0.05$ ) in the total organic carbon stock between AF and C plots per site.

### 3.5 Total carbon stock of the different systems

At the silvoarable sites, the total C stock (SOC + biomass) ranged from about 50 Mg C ha<sup>-1</sup> to 125 Mg C ha<sup>-1</sup>, and reached 220 Mg C ha<sup>-1</sup> at the TH silvopastoral site (Fig. 5). The total C stock was always higher in the agroforestry systems than in the control plots. In the young plantations (CH and ME), the total C stock was mainly SOC, with tree C stock accounting for less than 0.01% of the total C stock. At oldest sites, up to 75% of the difference between total C stock in the agroforestry systems and control plots was explained by the tree biomass (Fig. 5).

### 3.6 Organic carbon accumulation rate in soil and tree biomass

The mean SOC stock accumulation rate in the top 30 cm in the silvoarable systems was 0.18 Mg C ha<sup>-1</sup> yr<sup>-1</sup> (0.09 to 0.29 Mg C ha<sup>-1</sup> yr<sup>-1</sup>). This rate reached 0.24 Mg C ha<sup>-1</sup> yr<sup>-1</sup> when the SJ silvoarable site and its shallow soil (20 cm) was taken into account. At the RE site, the SOC stock accumulation rate was 0.25 Mg C ha<sup>-1</sup> yr<sup>-1</sup> in the top 30 cm, and 0.35 Mg C ha<sup>-1</sup> yr<sup>-1</sup> in the top 100 cm, with a SOC stock accumulation rate of about 0.1 Mg C ha<sup>-1</sup> yr<sup>-1</sup> in the 30-100 cm layer (Table 4). Tree rows contributed about 20% to 50% to the SOC stock accumulation rate although they covered only 7% to 18% of the agroforestry surface area.

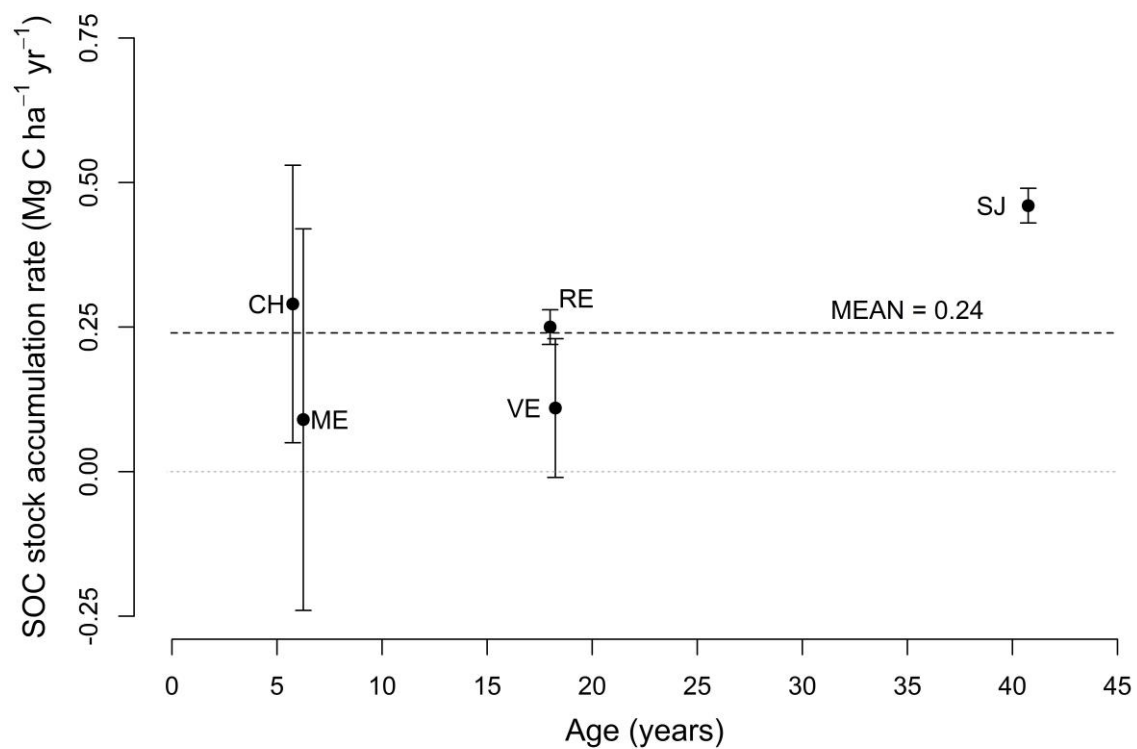
The C accumulation rate in the tree biomass in CH and ME young plantations was negligible (0.004 and 0.02 Mg C ha<sup>-1</sup> yr<sup>-1</sup>, respectively) (Table 5). In the older and denser silvoarable sites, this rate ranged from 0.62 to 1.85 Mg C ha<sup>-1</sup> yr<sup>-1</sup>, and was 1.76 Mg C ha<sup>-1</sup> yr<sup>-1</sup> at the TH silvopastoral site (Table 5).

432 **Table 5** Tree characteristics, aboveground and belowground carbon stocks at the various sites.

Site	Age (yr)	DBH (cm)	Height of merchantable timber (m)	Total height (m)	C stock of merchantable timber (kg C tree <sup>-1</sup> )	ABG tree C stock (kg C tree <sup>-1</sup> )	ABG tree C stock (Mg C ha <sup>-1</sup> )	Estimated BEG tree C stock (Mg C ha <sup>-1</sup> )	Estimated total tree C stock accumulation rate (Mg C ha <sup>-1</sup> yr <sup>-1</sup> )
CH	6	2.6 ± 0.2	1.45 ± 0.04	2.12 ± 0.11	0.44 ± 0.06	0.49 ± 0.07	0.017 ± 0.002	0.01 (0.01-0.01)	0.004 ± 0.0004
ME	6	5.5 ± 0.3	1.13 ± 0.03	3.18 ± 0.13	1.18 ± 0.12	2.07 ± 0.19	0.073 ± 0.007	0.03 (0.03-0.04)	0.02 ± 0.001
SJ	41	29.9 ± 1.3	3.11 ± 0.23	13.18 ± 0.10	41.44 ± 2.36	194.56 ± 14.94	19.85 ± 1.52	5.55 (3.28-9.38)	0.62 ± 0.10
VE	18	31.7 ± 1.5	4.17 ± 0.18	15.52 ± 0.36	56.85 ± 3.77	266.44 ± 19.90	26.64 ± 1.99	6.61 (4.00-10.95)	1.85 ± 0.27
RE	18	25.5 ± 1.4	4.49 ± 0.39	11.21 ± 0.65	46.23 ± 2.47	98.93 ± 7.80	10.88 ± 0.86	2.99 (1.89-4.72)	0.77 ± 0.11
TH	26	30.7 ± 1.4	4.10 ± 0.23	14.70 ± 0.32	53.80 ± 1.76	183.46 ± 2.66	36.69 ± 0.53	9.13 (5.34-15.63)	1.76 ± 0.25

433 Errors represent standard errors. Number of measured trees: CH=24, ME=20, SJ=10, VE=10, RE=9 except for biomass measurements where n=3,  
434 and TH=10. Values in brackets represent the 95% prediction interval for estimating the belowground biomass (Cairns et al., 1997). ABG:  
435 Aboveground, BEG: Belowground. CH: Châteaudun, ME: Melle, SJ: Saint-Jean-d'Angély, VE: Vézénobres, RE: Restinclières, TH: Theix.

436



**Figure 6.** SOC stock accumulation rates as a function of plantation age. Values are for the approximate top 30 cm, except for the SJ site (approximate top 20 cm, maximum soil depth).

## 4. Discussion

### 4.1 Spatial variation of SOC stock in silvoarable systems

The sampling protocol was designed to take account of the spatial distribution of SOC stocks as a function of distance from the trees. Sampling in the inter-rows in front of a tree or between two trees did not affect the estimation of SOC stocks. The protocol could, therefore, be simplified for instance by sampling only in front of a tree or by sampling along the diagonal of the sampling pattern, which was equivalent to a quarter of the Voronoi polygon (Levillain et al., 2011). Field sampling would then be less costly and less time-consuming.

The distance from the trees had no effect on SOC stocks in the inter-rows, except at the oldest SJ site. At this 41-year-old site, the width of the cropped alley had been reduced over the past 10 years owing to light competition, which might explain the gradient of SOC stocks observed. At the RE site, Cardinael et al., (2015b) suggested that close to the trees, organic C input coming from tree fine root senescence (Cardinael et al., 2015a; Germon et al., 2016), exudates and leaves might be compensated by a decrease in organic C input from crop residues owing to lower yields (Dufour et al., 2013). The same hypothesis might apply at the VE site, where no SOC stock gradient was found in the inter-rows (same tree density, same tree species and tree age as the RE site). Consequently, fewer soil samples could be taken to estimate SOC stock in the inter-rows. However, these two 18-year-old sites had a high tree density, the distance between two tree rows (11 m and 13 m) being almost the same as the mean tree height (15 m and 11 m). It is possible that a SOC stock gradient may appear with time in the inter-rows in low-density plantations with a large distance between two tree rows ( $> 30$  m). This gradient effect could also depend on the tree species. This hypothesis could be tested in the future at the CH and ME sites.

At all the silvoarable sites, the SOC stock was higher in the tree rows than in the inter-rows and in the control plot, especially in the topsoil layer (0-10 cm). Tree rows therefore had a considerable effect on SOC storage, contributing up to 50% of the additional SOC storage at silvoarable plot scale for only a small surface area. There were two main sources of organic matter returned to the soil in the tree rows: carbon from the trees (litter, fine roots and exudates) and carbon from the herbaceous vegetation. At the RE site, the aboveground and belowground biomass of the herbaceous vegetation in the tree rows was 2.13 Mg C ha<sup>-1</sup> and 0.74 Mg C ha<sup>-1</sup>, respectively (unpublished data). The C input to the soil from this vegetation in the tree rows could, therefore, be up to 2.9 Mg C ha<sup>-1</sup> yr<sup>-1</sup>. The spaces between the trees along the tree rows could be considered comparable to grass strips or natural grassland because of the herbaceous cover and the lack of soil tillage. Converting annual crop cultivation to grassland was shown to be very efficient in terms of SOC storage by Conant et al., (2001), Arrouays et al., (2002), and Soussana et al., (2004) with SOC stock accumulation rates ranging from 0.49 Mg C ha<sup>-1</sup> yr<sup>-1</sup> to 1.01 Mg C ha<sup>-1</sup> yr<sup>-1</sup> in the top 30 cm. Based on their results and on the high SOC stocks also measured in the topsoil in tree rows of young plantations with small tree biomass, we suggest that a major part of the SOC storage in the tree rows is due to the herbaceous vegetation. There was no clear difference between sown and natural herbaceous vegetation in the tree rows, although the highest SOC stock accumulation rate was obtained for sown grass (ME site, 1.3 Mg C ha<sup>-1</sup> yr<sup>-1</sup>). However, the management of these tree rows seems to be a key factor for increasing the SOC storage capacity of silvoarable systems. Several studies showed that including legumes in the composition of grasslands increased herbage productivity (Tilman et al., 2001; Marquard et al., 2009; Prieto et al., 2015) and SOC storage (Steinbeiss et al., 2008; Lange et al., 2015).



#### 4.2 SOC stock accumulation rates in silvoarable systems

In the five silvoarable systems studied, the mean SOC stock accumulation rate in the top 30 cm was 0.24 (0.09-0.46) Mg C ha<sup>-1</sup> yr<sup>-1</sup>. This estimate for silvoarable plots with an average age of 17.8 -yr, is slightly lower than previously suggested for 20-yr-old agroforestry systems in France (0.30 (0.03-0.41) Mg C ha<sup>-1</sup> yr<sup>-1</sup>) by Pellerin et al. (2013) based on a literature review but it is of the same order of magnitude. The SOC stock accumulation rate was also slightly lower than those reported by Oelbermann et al. (2006) for a 13-yr-old Canadian alley cropping system combining hybrid poplars and wheat, soybean and maize grown in rotation (0.30 Mg C ha<sup>-1</sup> yr<sup>-1</sup> in the top 20 cm and 0.39 Mg C ha<sup>-1</sup> yr<sup>-1</sup> in the top 40 cm). As well as, Peichl et al. (2006) reported a SOC stock accumulation rate of 1.04 Mg C ha<sup>-1</sup> yr<sup>-1</sup> in the top 20 cm for a 13-yr-old hybrid poplar and Norway spruce-barley agroforestry system. Overall, our estimated SOC stock accumulation rate is slightly lower than most published results (Lorenz and Lal, 2014; Kim et al., 2016). However, as reported by Cardinael et al. (2015b), our study estimated SOC storage in silvoarable systems using the equivalent soil mass, which gives more accurate results when soil bulk density is modified by changes in land use (Ellert and Bettany, 1995; Ellert et al., 2002), as was the case in these systems, especially in the tree rows. Furthermore, most fields in our study were owned and managed by farmers. Although this fact may generate some uncertainties, it has the advantage of taking account of a broad variety of practices that are commonly used by farmers.

At the two 18-year-old silvoarable sites (RE and VE) there was a significant increase in deep SOS stocks (below 30 cm). At the VE site this might be partially due to a slightly higher sand content in the control plot than in the agroforestry plot below 30 cm. At the RE site, this increase might result from a high density of deep tree fine roots (Mulia and Dupraz, 2006; Cardinael et al., 2015a). Although the SOC stock accumulation rate was lower than in topsoil layers, deep soil layers might then be able to store a large amount of SOC over a longer period owing to

better SOC stabilization conditions (Rasse et al., 2005). However, little is known about the effect of fresh organic matter input on deep soil layers and some authors found that this might stimulate the mineralization of old organic matter (Fontaine et al., 2004, 2007).

There was no change in the SOC stock accumulation rates with time in the silvoarable systems (Fig. 6) but very old sites (> 40 year old) were under-represented in this study. It is therefore difficult to assess the possible effect of tree age on the SOC accumulation rate. Tree growth increases organic litter production with time but competition with the intercrop also increases, potentially causing a decrease in crop yields such as cereals (Dufour et al., 2013). In a recent meta-analysis, Kim et al., (2016) found a slight decrease in the SOC stock accumulation rates in very old agroforestry systems, which was attributed to the soil reaching a new SOC stock equilibrium. Based on technical limits (soil depth, water holding capacity, field size), Pellerin et al., (2013) and Chenu et al., (2014) estimated that about 4 M ha of arable land could be converted to silvoarable systems in France. Given the estimated SOC stock accumulation rate in this study, this would mean that  $3.6 \cdot 10^5$  to  $1.84 \cdot 10^6$  Mg C could be stored annually in the soil.

#### *4.3 Carbon storage in silvopastoral systems*

The silvopastoral system set up on an andosol on permanent grassland (Tables 3 and 4) had no more additional SOC in the top 30 cm than grassland without trees. This site had been under pasture for decades before tree planting. It had a high SOC concentration (about 65 mg C g<sup>-1</sup> at 0-10 cm) and the soil was possibly at a steady state so that it could not store additional SOC, at least in fine soil fractions (Hassink, 1997). On a Patagonian andosol, Dube et al., (2012) also found that there was no significant difference in the SOC stocks in the top 40 cm of a silvopastoral system compared to a natural pasture. At our site, there was a significant effect of the silvopastoral system on SOC concentration and stock in the 30-50 cm layer: the SOC

concentration in the silvopastoral system was about 29 mg C g<sup>-1</sup> while in the grassland control it was only about 23 mg C g<sup>-1</sup>. It is possible that these deep soil layers in grasslands might be less SOC-saturated than topsoil layers and that roots from agroforestry trees could, therefore, contribute to additional SOC storage at depth. Haile et al. (2010) also found that trees affected deep SOC storage in silvopastoral systems. The biomass production of pastures in silvopastoral systems is usually less sensitive to shade than that of annual crops such as cereals grown in silvoarable systems (Moreno et al., 2007a, b; Moreno, 2008), except for N<sub>2</sub> fixing species (Carranca et al., 2015). Furthermore, grass under the tree cover can have a longer growing season (Puerto et al., 1990) and forage quality can be improved under tree canopies (Cubera et al., 2009). Therefore, silvopastoral systems might support a higher tree density than silvoarable systems (Benavides et al., 2009; Devkota et al., 2009), resulting in higher C stocks in the tree biomass (> 35 Mg C ha<sup>-1</sup> in this case).

#### *4.4 Carbon storage in the tree biomass*

The C stock in the tree biomass in the young plantations was negligible but, in the old plantations, C storage was greater in the tree biomass than in the soil (Fig. 5). The C accumulation rate in the tree biomass was higher in the old plantations than in young plantations. This is explained by the much higher total leaf area of old trees compared to very young trees and, therefore, by a higher photosynthesis capacity (Stephenson et al., 2014). However, estimates of the tree root biomass may be underestimated by the forest allometrics used. The architecture of agroforestry trees is different from forest trees owing to a lower intraspecific competition and to pruning. Moreover, agroforestry trees have been shown to be very deep rooted owing to soil tillage and to competition with intercrops (Mulia and Dupraz, 2006; Cardinael et al., 2015a).

Carbon stock in the tree biomass is not usually considered as a long-term C sink in the same way as the SOC stock but the residence time of C in the harvested biomass depends on the fate of wood products and can be as long as many decades for timber wood (Profft et al., 2009; Bauhus et al., 2010), which was the case for the trees grown at the sites studied. Branches could be used as a substitute for fossil fuel to produce energy (Kürsten, 2000; Cardinael et al., 2012) or be returned to the soil as ramial chipped wood amendments (Barthès et al., 2010).

## **5. Conclusion**

This study showed the potential of agroforestry systems to increase carbon stock in both the soil and tree biomass under different pedo-climatic conditions in France. The sampling protocol evaluated the spatial distribution of SOC stock and the results showed that it could be simplified for future studies. SOC stocks accumulated mainly in the tree rows and mainly in the top 30 cm of soil, but at deeper soil layers in two silvoarable sites, as well. Further studies are required to gain a better assessment of the effect of agroforestry on deep SOC stock. Allometric equations should be developed for trees grown in temperate agroforestry systems to reduce the uncertainty of tree root biomass estimates. Very old sites (> 40 years old) were under-represented in our dataset and long-term experimental agroforestry sites are required to assess the effect of trees on soil carbon over long periods.

## **Acknowledgments**

This study was financed by the French Environment and Energy Management Agency (ADEME), following a call for proposals as part of the REACCTIF program (Research on Climate Change Mitigation in Agriculture and Forestry). This study was part of the funded

project AGRIPSOL (Agroforestry for Soil Protection), coordinated by Agrooof. Rémi Cardinael was also funded by La Fondation de France. Two anonymous reviewers provided many excellent comments that improved the quality of this manuscript. We are very grateful to the farmers who allowed us to take samples in their fields and to Eric Villeneuve (INRA) for his help at the Theix site. We should also like to thank Daniel Billou (UPMC), Manon Villeneuve (IRD), Patricia Mahafaka and Clément Renoir for their help in the field and in the laboratory.

## References

- Albrecht, A., Kandji, S.T., 2003. Carbon sequestration in tropical agroforestry systems. *Agric. Ecosyst. Environ.* 99, 15–27.
- Amundson, R., 2001. The carbon budget in soils. *Annu. Rev. Earth Planet. Sci.* 29, 535–562.
- Angers, D.A., Arrouays, D., Saby, N.P.A., Walter, C., 2011. Estimating and mapping the carbon saturation deficit of French agricultural topsoils. *Soil Use Manag.* 27, 448–452.
- Arrouays, D., Balesdent, J., Jayet, P.A., Soussana, J.-F., Stengel, P., 2002. Contribution à la lutte contre l'effet de serre. Stocker du carbone dans les sols agricoles de France? Expertise Scientifique Collective, Synthèse du rapport. INRA, Paris.
- Arrouays, D., Deslais, W., Badeau, V., 2001. The carbon content of topsoil and its geographical distribution in France. *Soil Use Manag.* 17, 7–11.
- Bambrick, A.D., Whalen, J.K., Bradley, R.L., Cogliastro, A., Gordon, A.M., Olivier, A., Thevathasan, N. V, 2010. Spatial heterogeneity of soil organic carbon in tree-based intercropping systems in Quebec and Ontario, Canada. *Agrofor. Syst.* 79, 343–353.
- Barthès, B.G., Manlay, R.J., Porte, O., 2010. Effets de l'apport de bois raméal sur la plante et le sol : une revue des résultats expérimentaux. *Cah. Agric.* 19, 280–287.

609 Bauhus, J., van der Meer, P., Kanninen, M., 2010. Ecosystem Goods and Services from  
610 Plantation Forests. Earthscan, London, UK.

611 Benavides, R., Douglas, G.B., Osoro, K., 2009. Silvopastoralism in New Zealand: Review of  
612 effects of evergreen and deciduous trees on pasture dynamics. *Agrofor. Syst.* 76, 327–350.

613 Cairns, M.A., Brown, S., Helmer, E.H., Baumgardner, G.A., 1997. Root biomass allocation in  
614 the World's upland forests. *Oecologia* 111, 1–11.

615 Cardinael, R., Mao, Z., Prieto, I., Stokes, A., Dupraz, C., Kim, J.H., Jourdan, C., 2015a.  
616 Competition with winter crops induces deeper rooting of walnut trees in a Mediterranean  
617 alley cropping agroforestry system. *Plant Soil* 391, 219–235.

618 Cardinael, R., Chevallier, T., Barthès, B.G., Saby, N.P., Parent, T., Dupraz, C., Bernoux, M.,  
619 Chenu, C., 2015b. Impact of alley cropping agroforestry on stocks, forms and spatial  
620 distribution of soil organic carbon - A case study in a Mediterranean context. *Geoderma*  
621 259–260, 288–299.

622 Cardinael, R., Thevathasan, N., Gordon, A., Clinch, R., Mohammed, I., Sidders, D., 2012.  
623 Growing woody biomass for bioenergy in a tree-based intercropping system in southern  
624 Ontario, Canada. *Agrofor. Syst.* 86, 279–286.

625 Carranca, C., Castro, I. V., Figueiredo, N., Redondo, R., Rodrigues, A.R.F., Saraiva, I.,  
626 Maricato, R., Madeira, M.A. V, 2015. Influence of tree canopy on N<sub>2</sub> fixation by pasture  
627 legumes and soil rhizobial abundance in Mediterranean oak woodlands. *Sci. Total*  
628 *Environ.* 506–507, 86–94.

629 Chave, J., Coomes, D., Jansen, S., Lewis, S.L., Swenson, N.G., Zanne, A.E., 2009. Towards a  
630 worldwide wood economics spectrum. *Ecol. Lett.* 12, 351–66.

631 Chenu, C., Klumpp, K., Bispo, A., Angers, D., Colnenne, C., Metay, A., 2014. Stocker du  
632 carbone dans les sols agricoles: évaluation de leviers d'action pour la France. *Innov.*

633 Agron. 37, 23–37.

634 Conant, R.T., Paustian, K., Elliott, E.T., 2001. Grassland management and conversion into  
635 grassland: effects on soil carbon. Ecol. Appl. 11, 343–355.

636 Constantin, J., Mary, B., Laurent, F., Aubrion, G., Fontaine, A., Kerveillant, P., Beaudoin, N.,  
637 2010. Effects of catch crops, no till and reduced nitrogen fertilization on nitrogen leaching  
638 and balance in three long-term experiments. Agric. Ecosyst. Environ. 135, 268–278.

639 Cubera, E., Nunes, J.M., Madeira, M., Gazarini, L., 2009. Influence of *Quercus ilex* trees on  
640 herbaceous production and nutrient concentrations in southern Portugal. J. Plant Nutr. Soil  
641 Sci. 172, 565–571.

642 Devkota, N.R., Kemp, P.D., Hodgson, J., Valentine, I., Jaya, I.K.D., 2009. Relationship  
643 between tree canopy height and the production of pasture species in a silvopastoral system  
644 based on alder trees. Agrofor. Syst. 76, 363–374.

645 Dimassi, B., Cohan, J.-P., Labreuche, J., Mary, B., 2013. Changes in soil carbon and nitrogen  
646 following tillage conversion in a long-term experiment in Northern France. Agric. Ecosyst.  
647 Environ. 169, 12–20.

648 Dube, F., Espinosa, M., Stolpe, N.B., Zagal, E., Thevathasan, N. V., Gordon, A.M., 2012.  
649 Productivity and carbon storage in silvopastoral systems with *Pinus ponderosa* and  
650 *Trifolium* spp., plantations and pasture on an Andisol in Patagonia, Chile. Agrofor. Syst.  
651 86, 113–128.

652 Dufour, L., Metay, A., Talbot, G., Dupraz, C., 2013. Assessing Light Competition for Cereal  
653 Production in Temperate Agroforestry Systems using Experimentation and Crop  
654 Modelling. J. Agron. Crop Sci.

655 Ellert, B.H., Bettany, J.R., 1995. Calculation of organic matter and nutrients stored in soils  
656 under contrasting management regimes. Can. J. Soil Sci. 75, 529–538.

657 Ellert, B.H., Janzen, H.H., Entz, T., 2002. Assessment of a method to measure temporal change  
658 in soil carbon storage. *Soil Sci. Soc. Am. J.* 66, 1687–1695.

659 Fontaine, S., Bardoux, G., Abbadie, L., Mariotti, A., 2004. Carbon input to soil may decrease  
660 soil carbon content. *Ecol. Lett.* 7, 314–320.

661 Fontaine, S., Barot, S., Barré, P., Bdioui, N., Mary, B., Rumpel, C., 2007. Stability of organic  
662 carbon in deep soil layers controlled by fresh carbon supply. *Nature* 450, 277–281.

663 Freibauer, A., Rounsevell, M.D.A., Smith, P., Verhagen, J., 2004. Carbon sequestration in the  
664 agricultural soils of Europe. *Geoderma* 122, 1–23.

665 Germon, A., Cardinael, R., Prieto, I., Mao, Z., Kim, J.H., Stokes, A., Dupraz, C., Laclau, J.-P.,  
666 Jourdan, C., 2016. Unexpected phenology and lifespan of shallow and deep fine roots of  
667 walnut trees grown in a silvoarable Mediterranean agroforestry system. *Plant Soil* 401,  
668 409–426.

669 Haile, S.G., Nair, V.D., Nair, P.K.R., 2010. Contribution of trees to carbon storage in soils of  
670 silvopastoral systems in Florida, USA. *Glob. Chang. Biol.* 16, 427–438.

671 Harris, D., Horwath, W.R., Van Kessel, C., 2001. Acid fumigation of soils to remove carbonates  
672 prior to total organic carbon or carbon-13 isotopic analysis. *Soil Sci. Soc. Am. J.* 65, 1853–  
673 1856.

674 Hassink, J., 1997. The capacity of soils to preserve organic C and N by their association with  
675 clay and silt particles. *Plant Soil* 191, 77–87.

676 Houghton, R.A., 2007. Balancing the global carbon budget. *Annu. Rev. Earth Planet. Sci.* 35,  
677 313–347.

678 Howlett, D.S., Moreno, G., Mosquera Losada, M.R., Nair, P.K.R., Nair, V.D., 2011. Soil carbon  
679 storage as influenced by tree cover in the Dehesa cork oak silvopasture of central-western  
680 Spain. *J. Environ. Monit.* 13, 1897–904.



681 IUSS Working Group WRB, 2007. World Reference Base for Soil Resources 2006, first update  
682 2007. World Soil Resources Reports No. 103. FAO, Rome.

683 Janzen, H.H., 2006. The soil carbon dilemma: Shall we hoard it or use it? *Soil Biol. Biochem.*  
684 38, 419–424.

685 Kim, D.-G., Kirschbaum, M.U.F., Beedy, T.L., 2016. Carbon sequestration and net emissions  
686 of CH<sub>4</sub> and N<sub>2</sub>O under agroforestry: Synthesizing available data and suggestions for  
687 future studies. *Agric. Ecosyst. Environ.* 226, 65–78.

688 Kürsten, E., 2000. Fuelwood production in agroforestry systems for sustainable land use and  
689 CO<sub>2</sub>-mitigation. *Ecol. Eng.* 16, S69–S72.

690 Lal, R., 2004a. Soil carbon sequestration to mitigate climate change. *Geoderma* 123, 1–22.

691 Lal, R., 2004b. Soil carbon sequestration impacts on global climate change and food security.  
692 *Science* 304, 1623–1627.

693 Lamtom, S.H., Savidge, R.H., 2003. A reassessment of carbon content in wood: variation within  
694 and between 41 North American species. *Biomass and Bioenergy* 25, 381–388.

695 Lange, M., Eisenhauer, N., Sierra, C.A., Bessler, H., Engels, C., Griffiths, R.I., Mellado-  
696 Vázquez, P.G., Malik, A.A., Roy, J., Scheu, S., Steinbeiss, S., Thomson, B.C., Trumbore,  
697 S.E., Gleixner, G., 2015. Plant diversity increases soil microbial activity and soil carbon  
698 storage. *Nat. Commun.* 6, 6707.

699 Le Quéré, C., Peters, G.P., Andres, R.J., Andrew, R.M., Boden, T., Ciais, P., Friedlingstein, P.,  
700 Houghton, R.A., Marland, G., Moriarty, R., Sitch, S., Tans, P., Arneeth, A., Arvanitis, A.,  
701 Bakker, D.C.E., Bopp, L., Canadell, J.G., Chini, L.P., Doney, S.C., Harper, A., Harris, I.,  
702 House, J.I., Jain, A.K., Jones, S.D., Kato, E., Keeling, R.F., Klein Goldewijk, K.,  
703 Körtzinger, A., Koven, C., Lefèvre, N., Omar, A., Ono, T., Park, G.-H., Pfeil, B., Poulter,  
704 B., Raupach, M.R., Regnier, P., Rödenbeck, C., Saito, S., Schwinger, J., Segschneider, J.,

705 Stocker, B.D., Tilbrook, B., van Heuven, S., Viovy, N., Wanninkhof, R., Wiltshire, A.,  
706 Zaehle, S., Yue, C., 2014. Global carbon budget 2014. *Earth Syst. Sci. Data Discuss.* 7,  
707 521–610.

708 Levillain, J., Thongo M'Bou, A., Deleporte, P., Saint-André, L., Jourdan, C., 2011. Is the simple  
709 auger coring method reliable for below-ground standing biomass estimation in *Eucalyptus*  
710 forest plantations? *Ann. Bot.* 108, 221–230.

711 Lorenz, K., Lal, R., 2014. Soil organic carbon sequestration in agroforestry systems. A review.  
712 *Agron. Sustain. Dev.* 34, 443–454.

713 Luo, Z., Wang, E., Sun, O.J., 2010. Can no-tillage stimulate carbon sequestration in agricultural  
714 soils? A meta-analysis of paired experiments. *Agric. Ecosyst. Environ.* 139, 224–231.

715 Marquard, E., Weigelt, A., Temperton, V.M., Roscher, C., Schumacher, J., Buchmann, N.,  
716 Fischer, M., Weisser, W.W., Schmid, B., 2009. Plant species richness and functional  
717 composition drive overyielding in a six-year grassland experiment. *Ecology* 90, 3290–  
718 3302.

719 Martin, M.P., Wattenbach, M., Smith, P., Meersmans, J., Jolivet, C., Boulonne, L., Arrouays,  
720 D., 2011. Spatial distribution of soil organic carbon stocks in France. *Biogeosciences* 8,  
721 1053–1065.

722 Moreno, G., 2008. Response of understorey forage to multiple tree effects in Iberian dehesas.  
723 *Agric. Ecosyst. Environ.* 123, 239–244.

724 Moreno, G., Obrador, J.J., García, A., 2007a. Impact of evergreen oaks on soil fertility and crop  
725 production in intercropped dehesas. *Agric. Ecosyst. Environ.* 119, 270–280.

726 Moreno, G., Obrador, J.J., García, E., Cubera, E., Montero, M.J., Pulido, F., Dupraz, C., 2007b.  
727 Driving competitive and facilitative interactions in oak dehesas through management  
728 practices. *Agrofor. Syst.* 70, 25–40.

729 Mosquera Losada, M.R., Freese, D., Rigueiro-Rodríguez, A., 2011. Carbon Sequestration in  
 730 European Agroforestry Systems, in: Kumar, B.M., Nair, P.K.R. (Eds.), Carbon  
 731 Sequestration Potential of Agroforestry Systems. Springer Netherlands, pp. 43–59.

732 Mulia, R., Dupraz, C., 2006. Unusual fine root distributions of two deciduous tree species in  
 733 southern France: What consequences for modelling of tree root dynamics? *Plant Soil* 281,  
 734 71–85.

735 Nair, P.K., 1993. An introduction to agroforestry. Kluwer, Dordrecht, The Netherlands.

736 Oelbermann, M., Voroney, R.P., Thevathasan, N. V., Gordon, A.M., Kass, D.C.L.,  
 737 Schlönvoigt, A.M., 2006. Soil carbon dynamics and residue stabilization in a Costa Rican  
 738 and southern Canadian alley cropping system. *Agrofor. Syst.* 68, 27–36.

739 Paustian, K., Andrén, O., Janzen, H., Lal, R., Smith, P., Tian, G., Tiessen, H., Van Noordwijk,  
 740 M., Woomer, P., 1997. Agricultural soils as a sink to mitigate CO<sub>2</sub> emissions. *Soil Use*  
 741 *Manag.* 13, 230–244.

742 Peichl, M., Thevathasan, N. V, Gordon, A.M., Huss, J., Abohassan, R.A., 2006. Carbon  
 743 sequestration potentials in temperate tree-based intercropping systems, southern Ontario,  
 744 Canada. *Agrofor. Syst.* 66, 243–257.

745 Pellerin, S., Bamière, L., Angers, D., Béline, F., Benoît, M., Butault, J.P., Chenu, C., Colnenne-  
 746 David, C., De Cara, S., Delame, N., Doreau, M., Dupraz, P., Faverdin, P., Garcia-Launay,  
 747 F., Hassouna, M., Hénault, C., Jeuffroy, M., Klumpp, K., Metay, A., Moran, D., Recous,  
 748 S., Samson, E., Savini, I., Pardon, L., 2013. How can French agriculture contribute to  
 749 reducing greenhouse gas emissions? Abatement potential and cost of ten technical  
 750 measures. Synopsis of the study report, INRA, Paris (France).

751 Picard, N., Saint-André, L., Henry, M., 2012. Manual for building tree volume and biomass  
 752 allometric equations. From field measurement to prediction, CIRAD. ed. FAO.

Pinheiro, J., Bates, D., DebRoy, S., Sarkar, D., R Development Core Team, 2013. nlme: Linear and Nonlinear Mixed Effects Models. R package version 3.1-111.

Poeplau, C., Don, A., 2015. Carbon sequestration in agricultural soils via cultivation of cover crops – A meta-analysis. *Agric. Ecosyst. Environ.* 200, 33–41.

Prieto, I., Violle, C., Barre, P., Durand, J., Ghesquiere, M., Litrico, I., 2015. Complementary effects of species and genetic diversity on productivity and stability of sown grasslands. *Nat. Plants* 1–5.

Profft, I., Mund, M., Weber, G.-E., Weller, E., Schulze, E.-D., 2009. Forest management and carbon sequestration in wood products. *Eur. J. For. Res.* 128, 399–413.

Puerto, A., Rico, M., Matias, M., Garcia, J., 1990. Variation in structure and diversity in Mediterranean grasslands related to trophic status and grazing intensity. *J. Veg. Sci.* 1, 445–452.

R Development Core Team, 2013. R: A language and environment for statistical computing.

Rasse, D.P., Rumpel, C., Dignac, M.F., 2005. Is soil carbon mostly root carbon? Mechanisms for a specific stabilisation. *Plant Soil* 269, 341–356.

Rhoades, C.C., 1997. Single-tree influences on soil properties in agroforestry: lessons from natural forest and savanna ecosystems. *Agrofor. Syst.* 35, 71–94.

Smith, P., 2004. Carbon sequestration in croplands: the potential in Europe and the global context. *Eur. J. Agron.* 20, 229–236.

Soussana, J.-F., Loiseau, P., Vuichard, N., Ceschia, E., Balesdent, J., Chevallier, T., Arrouays, D., 2004. Carbon cycling and sequestration opportunities in temperate grasslands. *Soil Use Manag.* 20, 219–230.

Steinbeiss, S., Beßler, H., Engels, C., Temperton, V.M., Buchmann, N., Roscher, C., Kreutziger, Y., Baade, J., Habekost, M., Gleixner, G., 2008. Plant diversity positively

affects short-term soil carbon storage in experimental grasslands. *Glob. Chang. Biol.* 14,  
2937–2949.

Stephenson, N.L., Das, A.J., Condit, R., Russo, S.E., Baker, P.J., Beckman, N.G., Coomes,  
D.A., Lines, E.R., Morris, W.K., Rüger, N., Álvarez, E., Blundo, C., Bunyavejchewin, S.,  
Chuyong, G., Davies, S.J., Duque, Á., Ewango, C.N., Flores, O., Franklin, J.F., Grau, H.R.,  
Hao, Z., Harmon, M.E., Hubbell, S.P., Kenfack, D., Lin, Y., Makana, J.-R., Malizia, A.,  
Malizia, L.R., Pabst, R.J., Pongpattananurak, N., Su, S.-H., Sun, I.-F., Tan, S., Thomas,  
D., van Mantgem, P.J., Wang, X., Wiser, S.K., Zavala, M.A., 2014. Rate of tree carbon  
accumulation increases continuously with tree size. *Nature* 507, 90–93.

Tilman, D., Reich, P.B., Knops, J., Wedin, D., Mielke, T., Lehman, C., 2001. Diversity and  
productivity in a long-term grassland experiment. *Science* 294, 843–845.

Upson, M.A., Burgess, P.J., 2013. Soil organic carbon and root distribution in a temperate  
arable agroforestry system. *Plant Soil* 373, 43–58.

Virto, I., Barré, P., Burlot, A., Chenu, C., 2012. Carbon input differences as the main factor  
explaining the variability in soil organic C storage in no-tilled compared to inversion tilled  
agrosystems. *Biogeochemistry* 108, 17–26.

Wotherspoon, A., Thevathasan, N. V., Gordon, A.M., Voroney, R.P., 2014. Carbon  
sequestration potential of five tree species in a 25-year-old temperate tree-based  
intercropping system in southern Ontario, Canada. *Agrofor. Syst.* 88, 631–643.

Zanne, A.E., Lopez-Gonzalez, G., Coomes, D.A., Llic, J., Jansen, J., Lewis, S.L., Miller, R.B.,  
Swenson, N.G., Wiemann, M.C., Chave, J., 2009. Data from: Towards a worldwide wood  
economics spectrum. Dryad Digital Repository. <http://dx.doi.org/10.5061/dryad.234>.

801 **Table S1** ANOVA on the linear mixed-effects (LME) model for SOC content, bulk density and SOC stock in the agroforestry plots as a function  
802 of depth, location (inter-row or tree row), distance to the closest tree, and interactions between these.

Site		Soil organic carbon content		Bulk density		Soil organic carbon stock	
		F-value	Pr(>F)	F-value	Pr(>F)	F-value	Pr(>F)
CH	Depth	64.982	<0.0001	10.956	0.0001	22.341	<0.0001
	Location	2.246	0.137	3.153	0.079	1.890	0.173
	Distance	0.394	0.532	0.266	0.607	0.379	0.540
	Depth×Location	8.078	0.0006	0.672	0.513	6.908	0.002
	Depth×Distance	0.576	0.564	0.296	0.744	0.570	0.568
	Location×Distance	0.227	0.635	0.226	0.636	0.472	0.494
ME	Depth	140.956	<0.0001	20.473	<0.0001	24.004	<0.0001
	Location	130.363	<0.0001	78.246	<0.0001	116.989	<0.0001
	Distance	0.012	0.911	7.257	0.008	0.016	0.900
	Depth×Location	51.699	<0.0001	15.888	<0.0001	45.731	<0.0001
	Depth×Distance	1.627	0.202	1.910	0.154	2.895	0.063
	Location×Distance	0.004	0.949	0.162	0.688	0.144	0.705
SJ	Depth	370.623	<0.0001	7.285	0.0104	284.905	<0.0001
	Location	35.543	<0.0001	0.356	0.554	33.719	<0.0001
	Distance	15.183	0.0004	0.691	0.411	8.827	0.005
	Depth×Location	6.719	0.014	6.305	0.017	9.250	0.004
	Depth×Distance	4.101	0.0501	7.985	0.008	10.264	0.002
	Location×Distance	0.987	0.327	1.534	0.223	0.728	0.399
VE	Depth	110.547	<0.0001	39.920	<0.0001	19.071	<0.0001
	Location	24.017	<0.0001	5.956	0.016	23.272	<0.0001
	Distance	0.001	0.980	0.674	0.413	0.083	0.773
	Depth×Location	2.801	0.019	1.998	0.082	2.243	0.053
	Depth×Distance	0.086	0.994	0.917	0.472	0.151	0.980
	Location×Distance	0.278	0.599	0.095	0.758	0.075	0.785
RE	Depth	703.719	<0.0001	391.32	<0.0001	723.666	<0.0001
	Location	223.367	<0.0001	23.90	<0.0001	66.935	<0.0001
	Distance	2.229	0.1387	2.12	0.1491	2.353	0.1283
	Depth×Location	272.736	<0.0001	10.04	<0.0001	68.377	<0.0001
	Depth×Distance	2.338	0.0173	0.68	0.7137	1.775	0.0784
	Location×Distance	4.425	0.0380	1.25	0.2666	3.285	0.0731

TH	Depth	89.206	<0.0001	2.739	0.033	59.624	<0.0001
	Location	0.040	0.842	0.577	0.449	0.032	0.859
	Distance	1.511	0.222	6.966	0.010	0.446	0.506
	Depth×Location	0.673	0.612	0.817	0.517	0.622	0.648
	Depth×Distance	0.225	0.924	0.750	0.560	0.341	0.850
	Location×Distance	0.235	0.629	1.663	0.200	0.001	0.975

803 CH: Châteaudun, ME: Melle, SJ: Saint-Jean-d'Angély, VE: Vézénobres, RE: Restinclières, TH: Theix.

804

805  
806  
807  
808  
809  
810  
811  
812  
813  
814  
815  
816  
817  
818  
819  
820  
821  
822  
823  
824  
825  
826  
827  
828  
829  
830  
831